

Chichester Employment Land Review Update

Chichester District Council

Appendix: Employment Site Plans

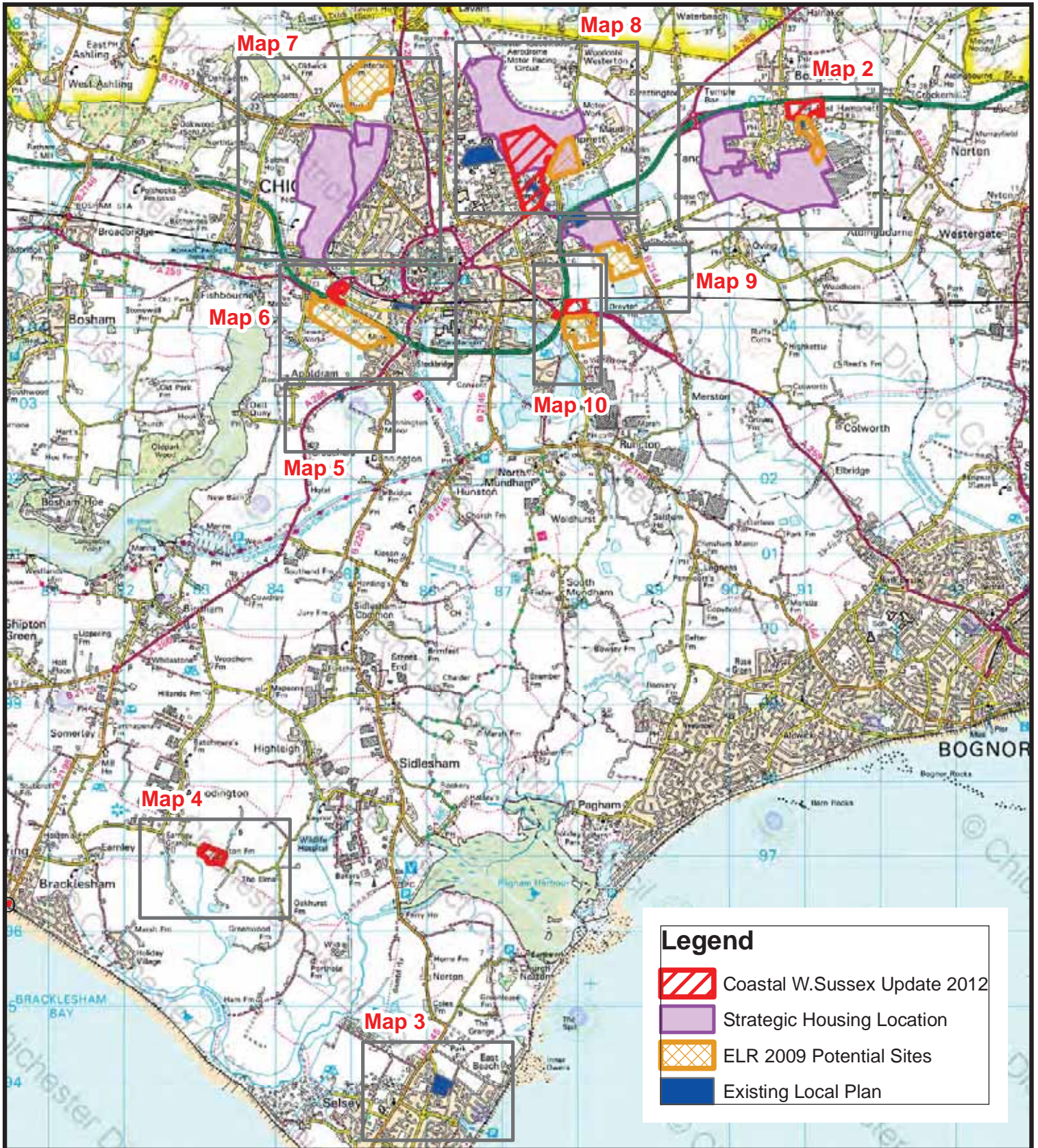
January 2013

J027933

Table of Contents

Broad Area	Name of site	Status	Site Number	Map Number
Sites within Chichester City Urban Area	Linpac Site, Quarry Lane Industrial Estate, Chichester	In Existing Employment Area	15	10
	Graylingwell Hospital, Chichester	Local Plan Allocation	9	8
	Plot 12, Terminus Road	In Existing Employment Area	26	6
	Southern Gate, off Terminus Road, Chichester	In Existing Employment Area	10	6
	Barnfield Drive, Chichester	Local Plan Allocation	8	8
Potential Employment Sites around Chichester City	West of Chichester	Potential Development Location	4	7
	Land at Whitehouse Farm, Chichester (West of Chichester)	Potential Development Location	23	7
	Fishbourne Road to Hunters Race (West of Chichester)	Potential Development Location	20	7
	North East Chichester	Potential Development Location	3	8
	Additional land between Madgwick Lane and Stane Street, Westhampnett, Chichester	Potential Development Location	18	8
	Land between A27 and Shopwhyke Road, Chichester	In Existing Employment Area	11/12	9
	Portfield/ Shopwyke Lakes (East of Chichester)	Potential Development Location	2	9
	Additional land south of Shopwhyke Road, west of Sherwood Nursery, Chichester	Potential Development Location	17	9
	Former MOD Fuel Depot Site, Chichester	Potential Development Location	14	10
	Land to South of A259 Bognor Road, Chichester	Potential Development Location	21	10
Land south of Terminus Road Industrial Estate/Fishbourne Roundabout, Chichester	Potential Development Location	19	6	

Broad Area	Name of site	Status	Site Number	Map Number
Potential Employment Sites at Tangmere	Chichester Business Park, Tangmere, Chichester	Local Plan Allocation	7	2
	City Fields Extension, Tangmere	Potential Development Location	22/ 25	2
	Tangmere Village Development	Potential Development Location	1/24/25	2
Sites to the South of Chichester City	Donnington Park, Stockbridge	In Existing Employment Area	6	5
	Easton Farm, Almodington	Potential Development Location	13	4
	Land between Manor Road and Manor Lane, Selsey	Local Plan Allocation	5	3



CHICHESTER DISTRICT COUNCIL



Location - Chichester District

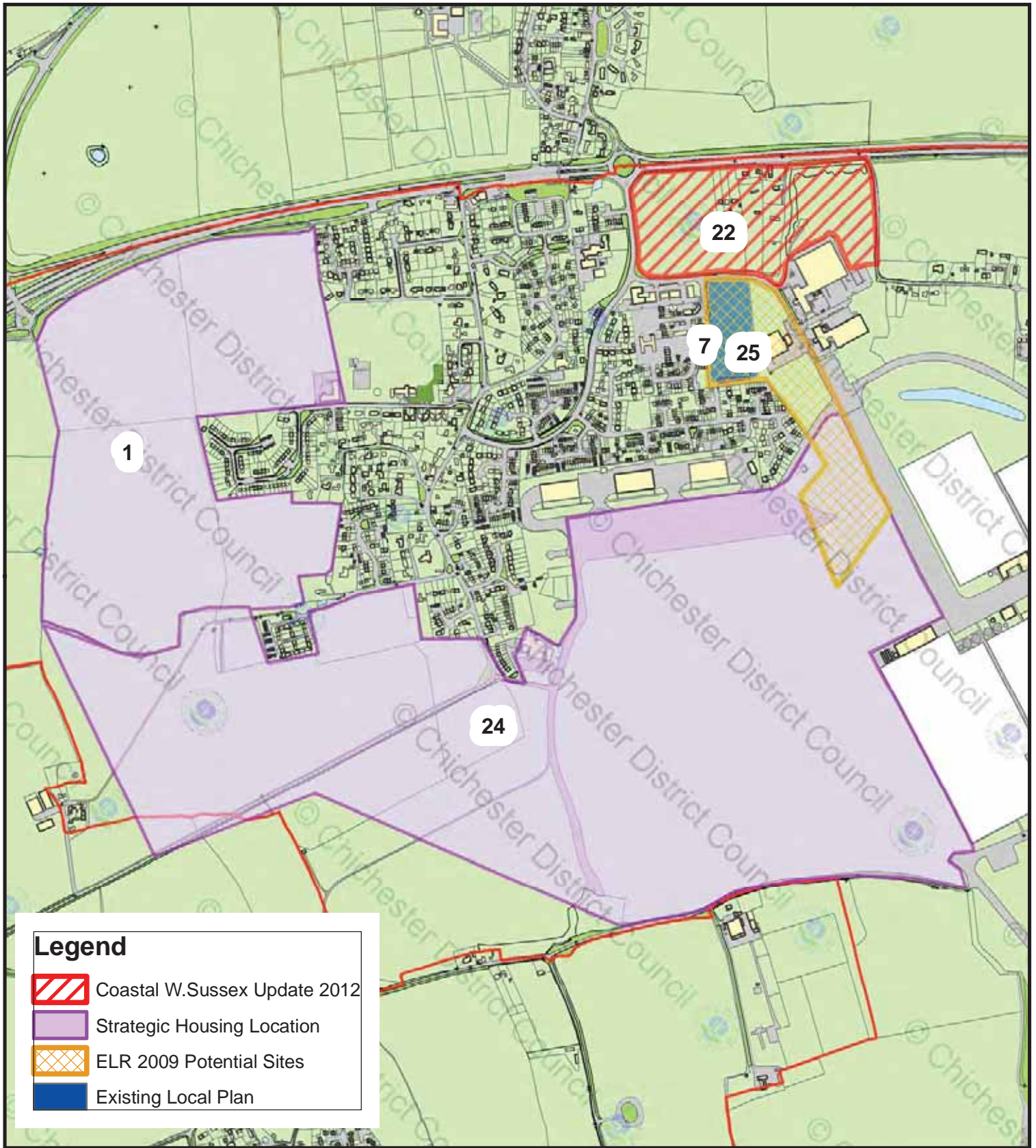
Description - All Sites

Scale: 1:68,602





Reference: Map 1

Date: 18/12/2012

Author: E Roberts



Legend

-  Coastal W.Sussex Update 2012
-  Strategic Housing Location
-  ELR 2009 Potential Sites
-  Existing Local Plan



CHICHESTER DISTRICT COUNCIL



Location - Map 2			
Description - Tangmere Sites			/
Scale: 1:10,000	Reference: Map 2	Date: 29/06/2012	Author: E Roberts
© Crown copyright and database rights 2012 Ordnance Survey 100018803		Path:	Reference



CHICHESTER DISTRICT COUNCIL



Location - Selsey

Description - Land between Manor Road and Manor Lane

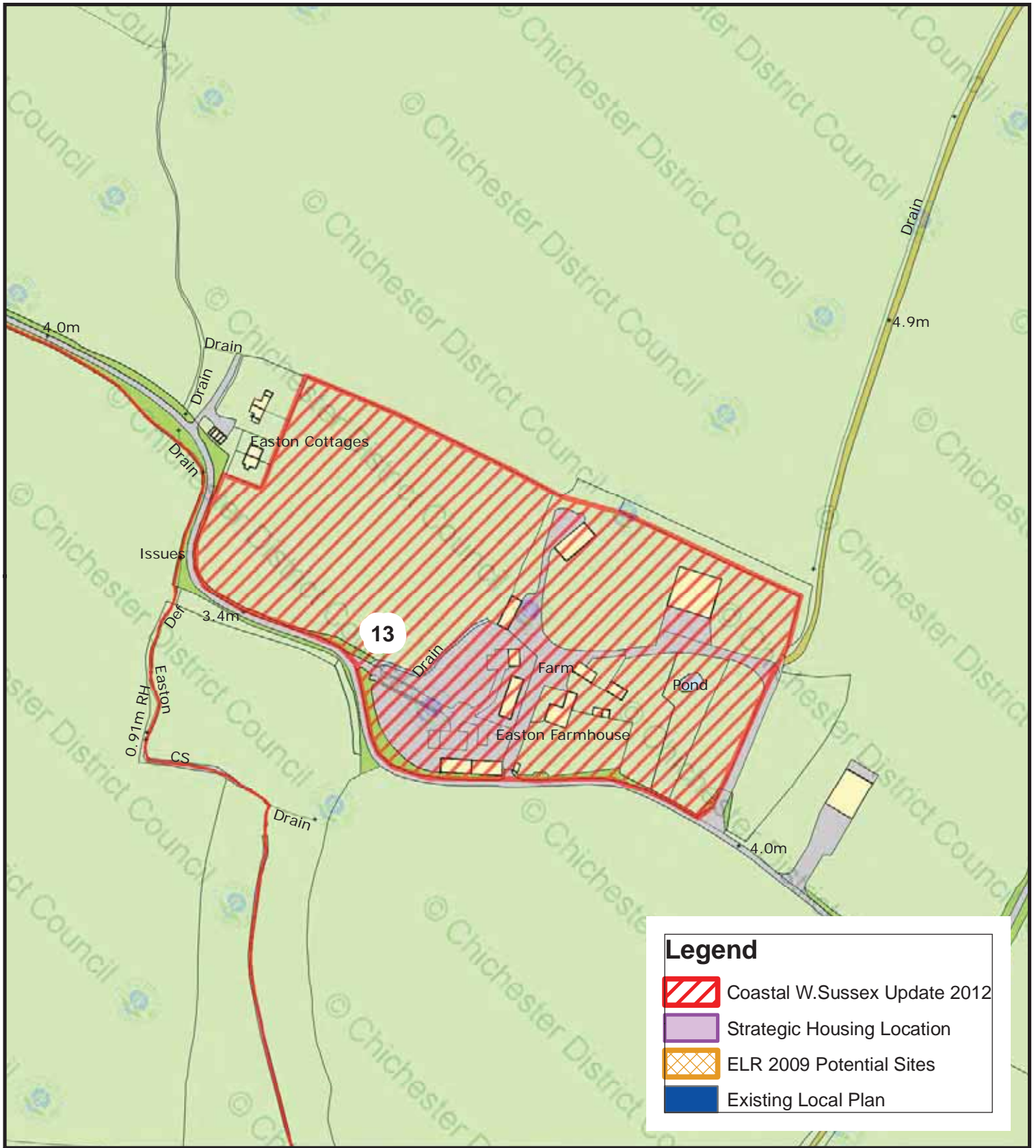


Scale: 1:5,000

Reference: Map 3

Date: 29/06/2012

Author: E Roberts



CHICHESTER DISTRICT COUNCIL



Location - Easton Farm

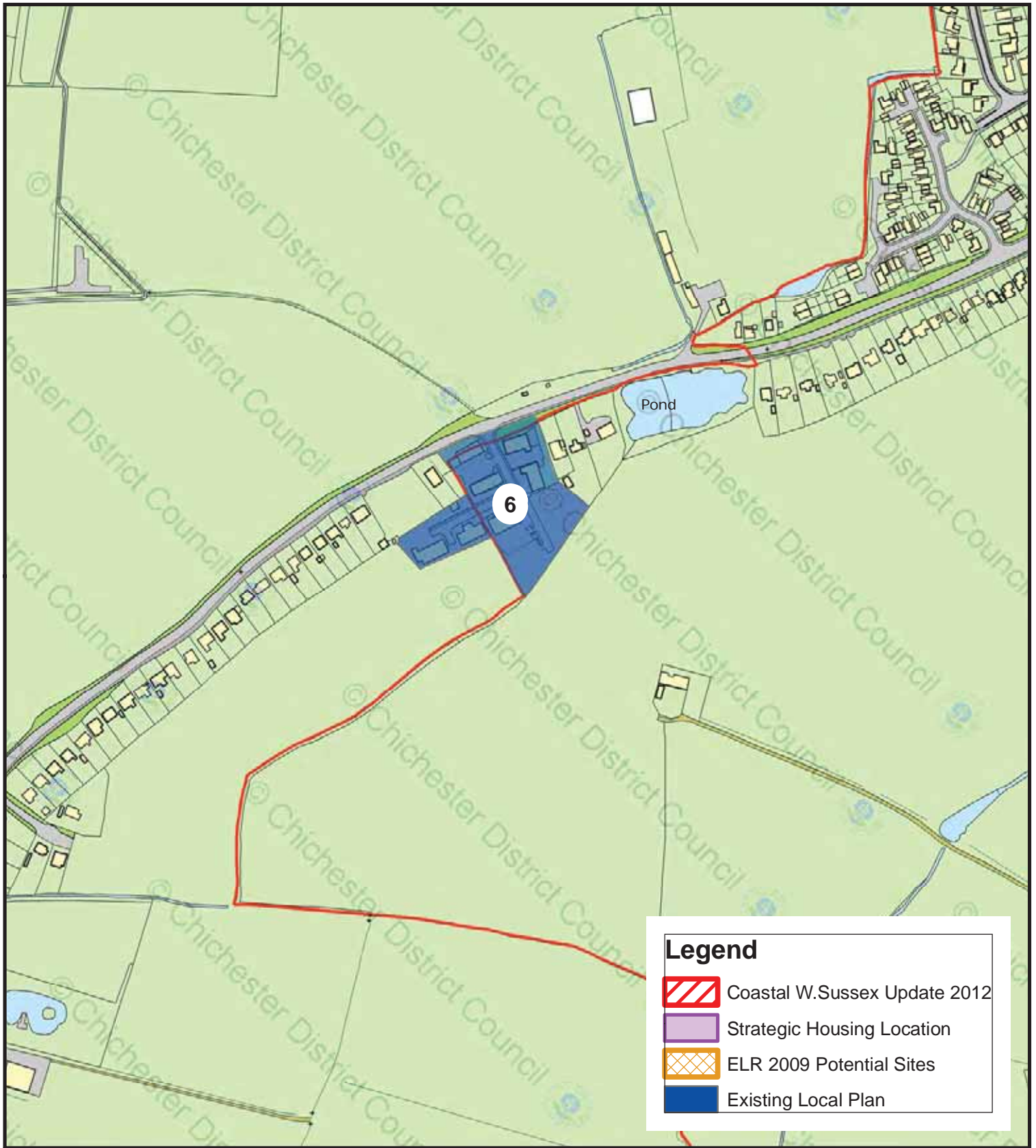
Description -

Scale: 1:3,000





Reference: Map 4

Date: 29/06/2012

Author: E Roberts



Legend

-  Coastal W.Sussex Update 2012
-  Strategic Housing Location
-  ELR 2009 Potential Sites
-  Existing Local Plan



CHICHESTER DISTRICT COUNCIL



Location - Donnington Park, Stockbridge

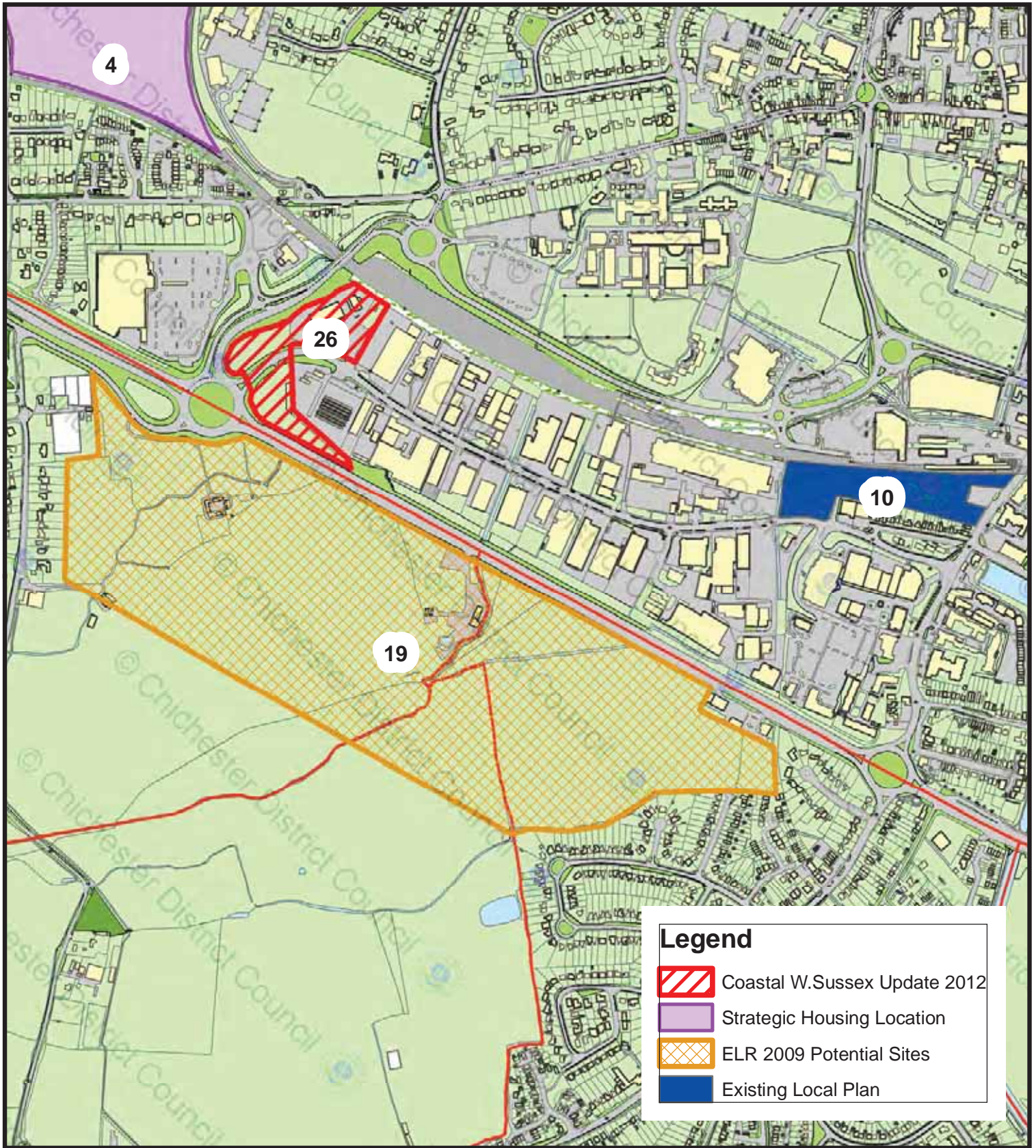
Description -

Scale: 1:4,000

Reference: Map 5

Date: 29/06/2012

Author: E Roberts



CHICHESTER DISTRICT COUNCIL



Location - South West Chichester

Description -

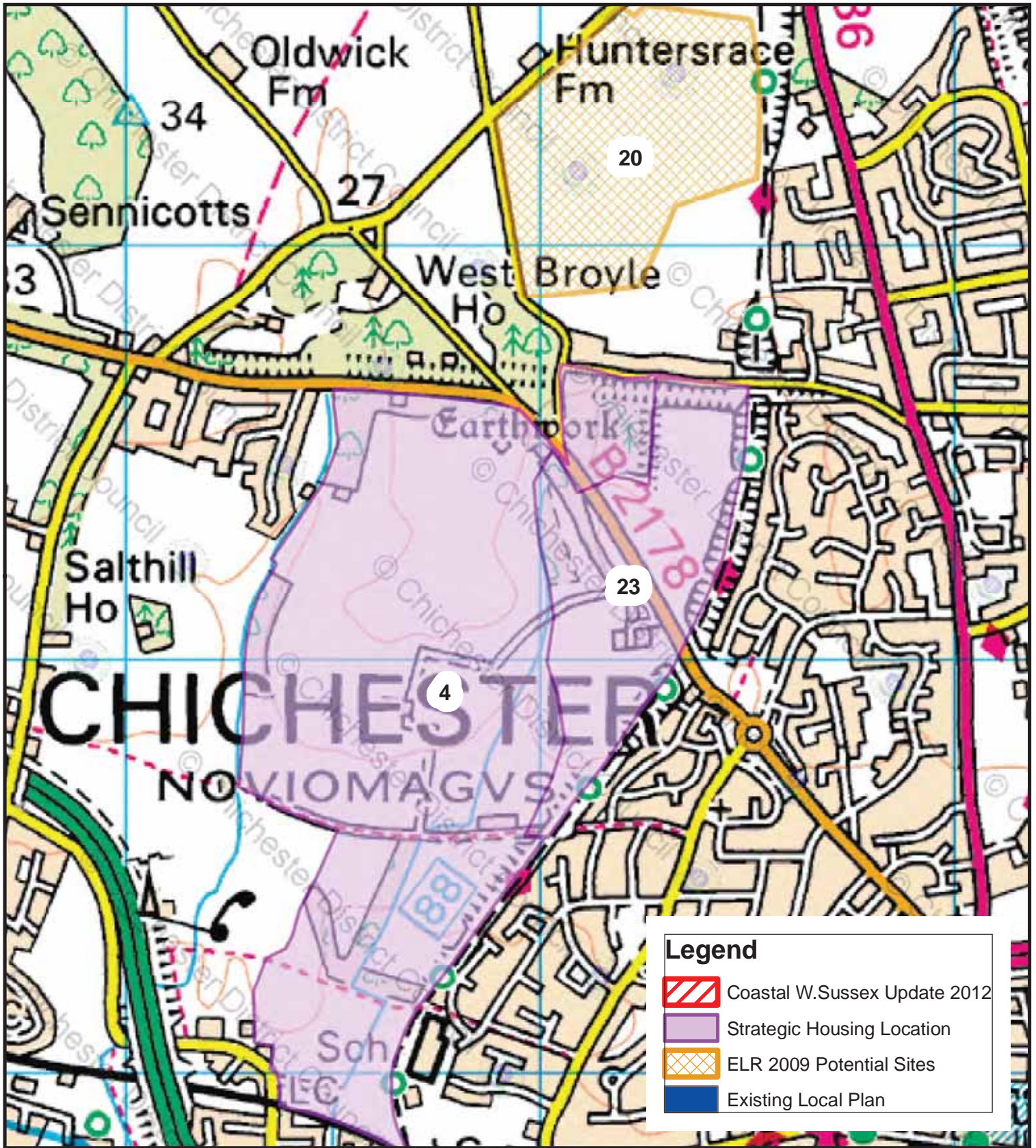


Scale: 1:8,000

Reference: Map 6

Date: 18/12/2012

Author: E Roberts



CHICHESTER DISTRICT COUNCIL



Location - North West Chichester

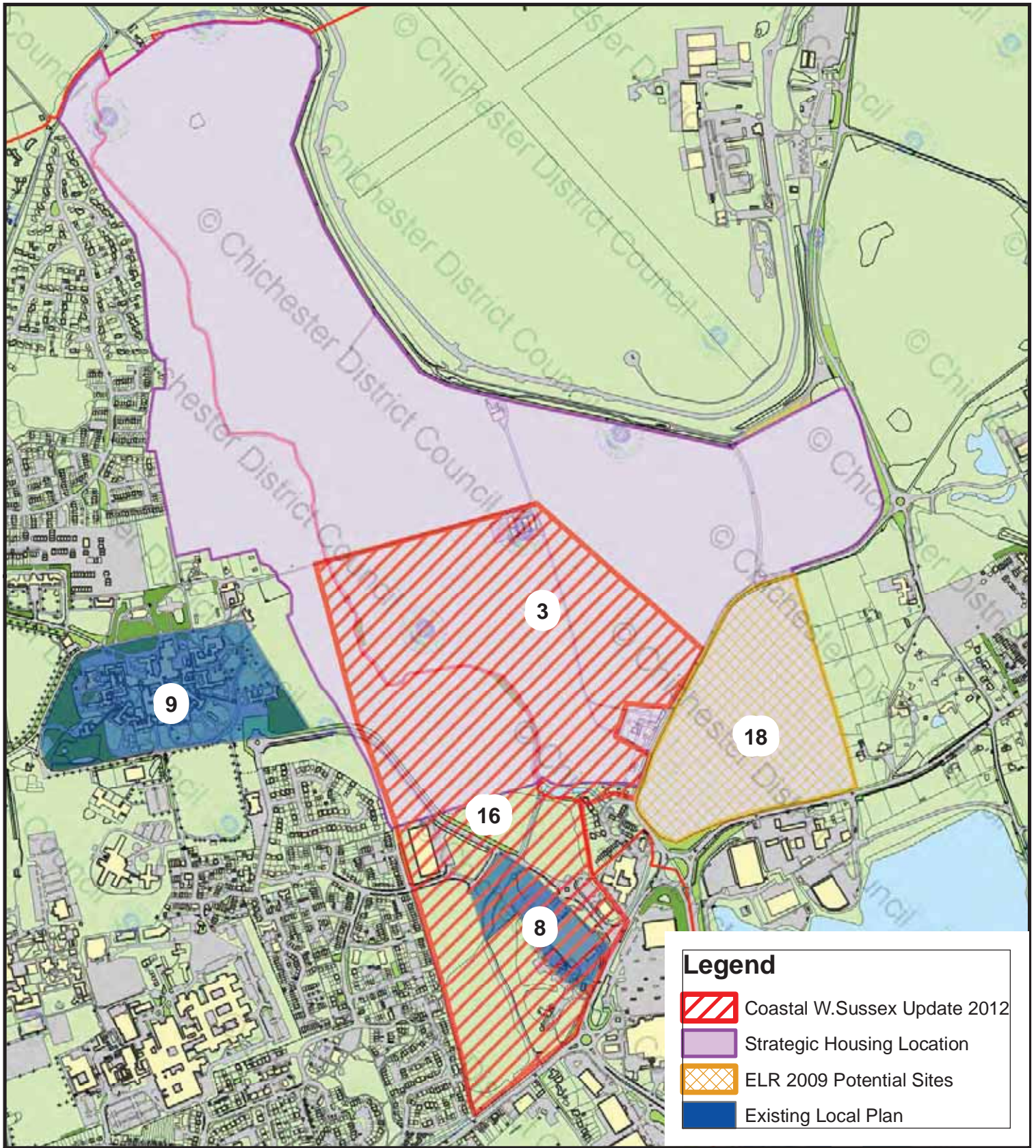
Description -

Scale: 1:12,500

Reference: Map 7

Date: 29/06/2012

Author: E Roberts



CHICHESTER DISTRICT COUNCIL



Location - North East Chichester

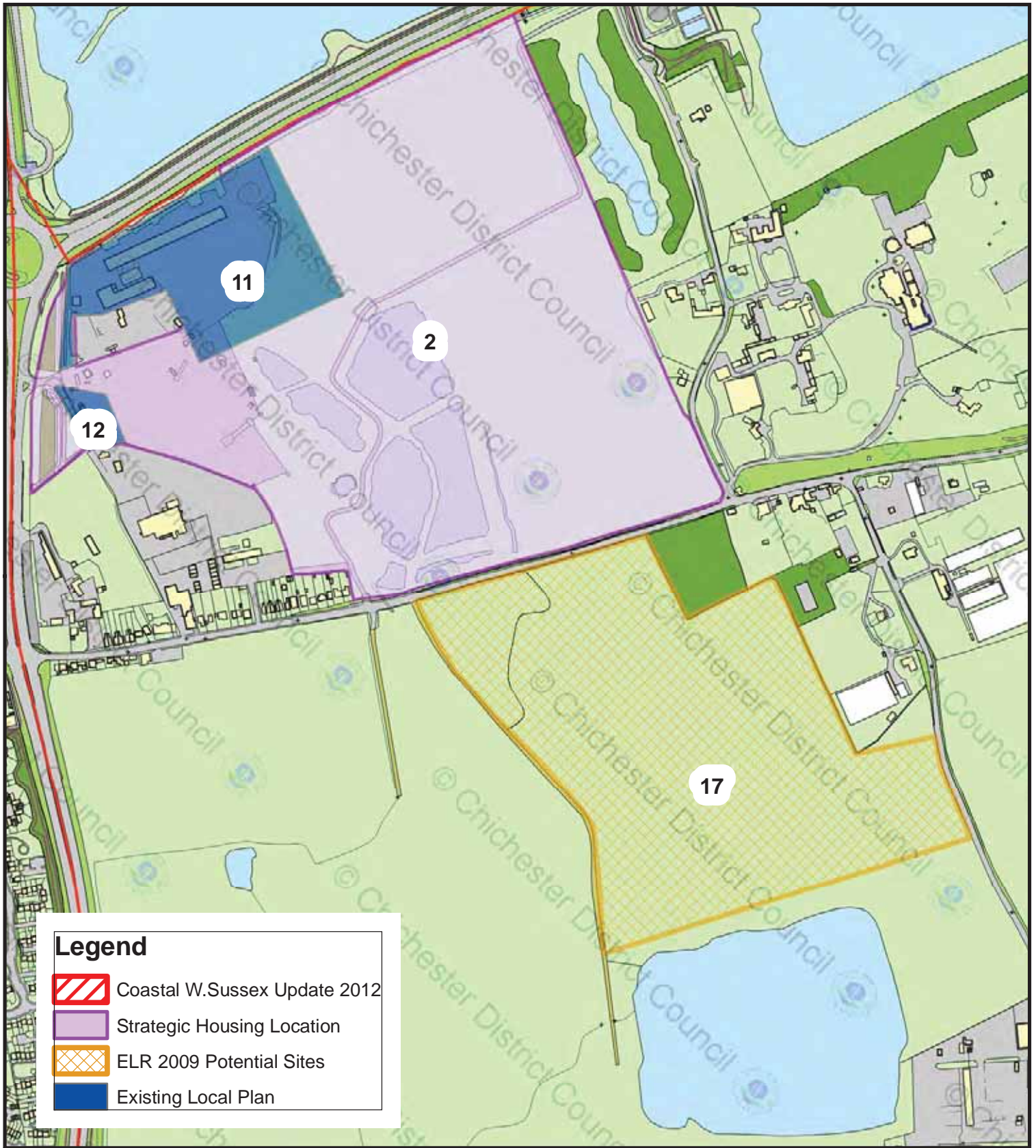
Description -

Scale: 1:10,000

Reference: Map 8

Date: 29/06/2012

Author: E Roberts



CHICHESTER DISTRICT COUNCIL



Location - East Chichester

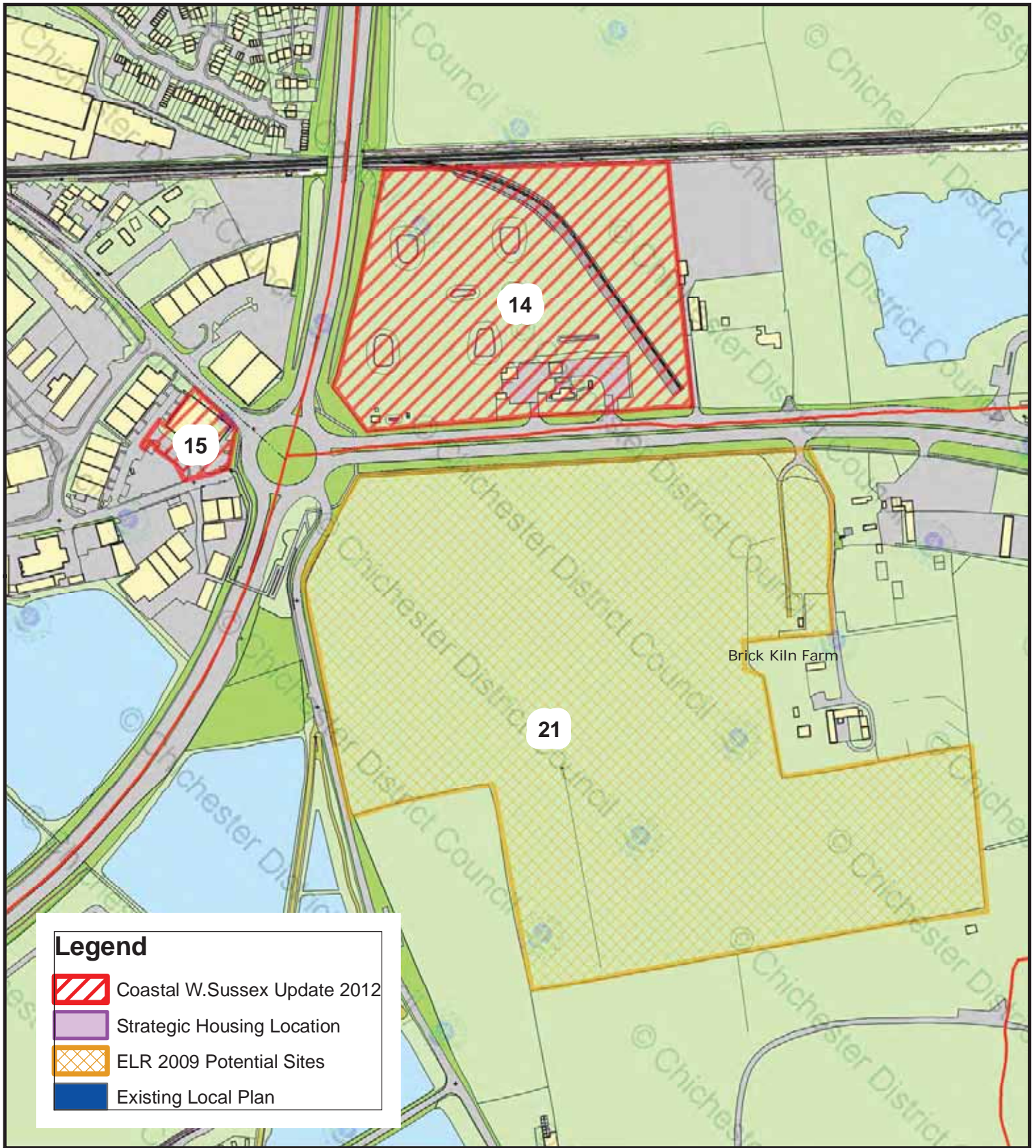
Description -

Scale: 1:6,000





Reference: Map 9

Date: 29/06/2012

Author: E Roberts



Legend

-  Coastal W.Sussex Update 2012
-  Strategic Housing Location
-  ELR 2009 Potential Sites
-  Existing Local Plan



CHICHESTER DISTRICT COUNCIL



Location - South East Chichester

Description -

Scale: 1:4,000

Reference: Map 10

Date: 29/06/2012

Author: E Roberts