

SECTION F Appendices
CHICHESTER LOCAL PLAN REVIEW 2035
LANDSCAPE CAPACITY STUDY
MARCH 2019



Suite B, Ideal House, Bedford Road,
Petersfield, Hants GU32 3DA
Tel: +44 (0)1730 262040 lionel@terrafirmaconsultancy.com

Appendix A Study area diagrams:

Figure 1 Study area and sub-areas

Figure 2 Landscape Designations

Figure 3 South Downs National Park constraints

Figure 4 Landscape character areas

Figure 5 Topography

Figure 6 Nature conservation

Figure 7 Historic Designations

Figure 8 Public access

Figure 9 Flood zones

Figure 1 Study area and sub-areas

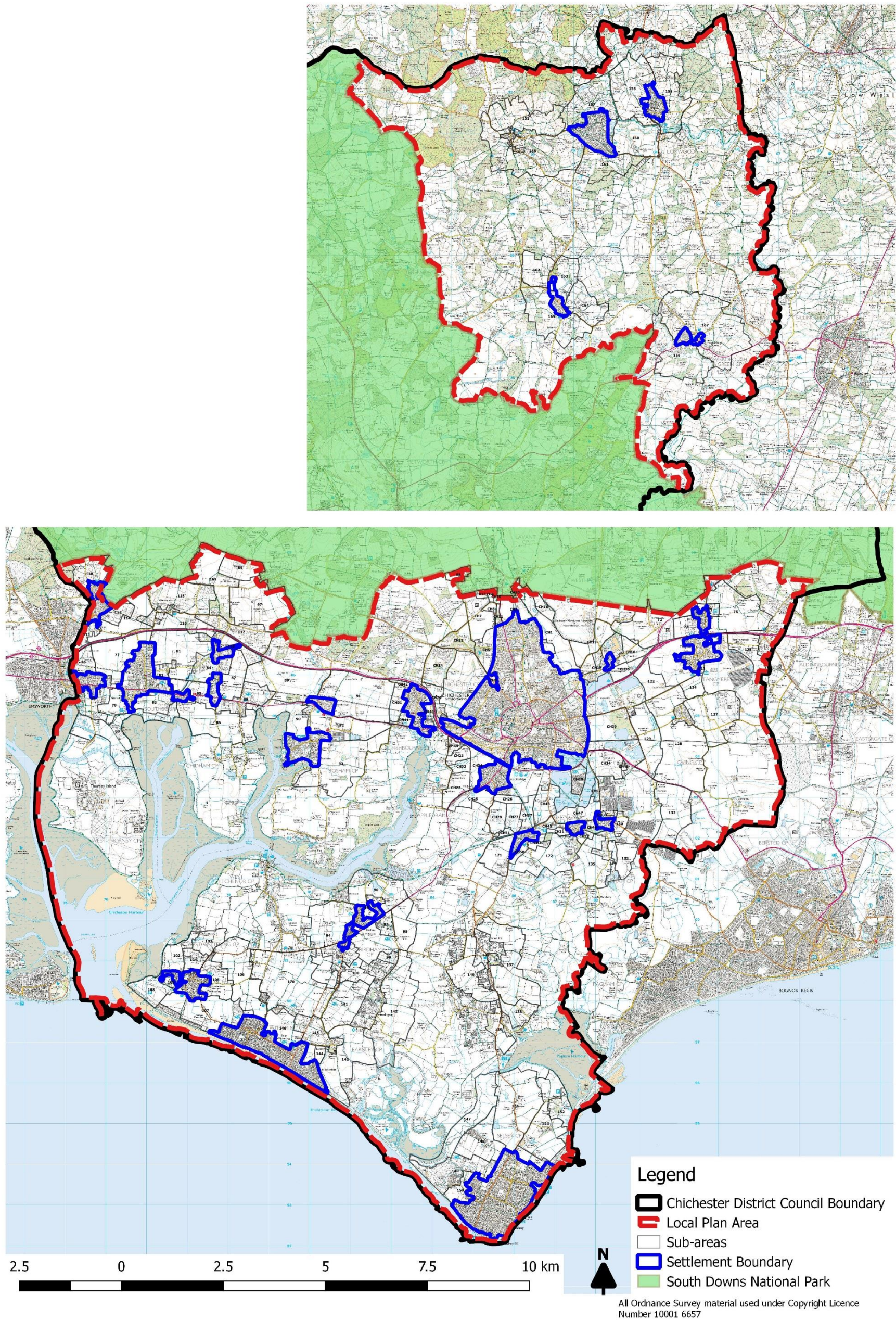


Figure 2 Landscape Designations

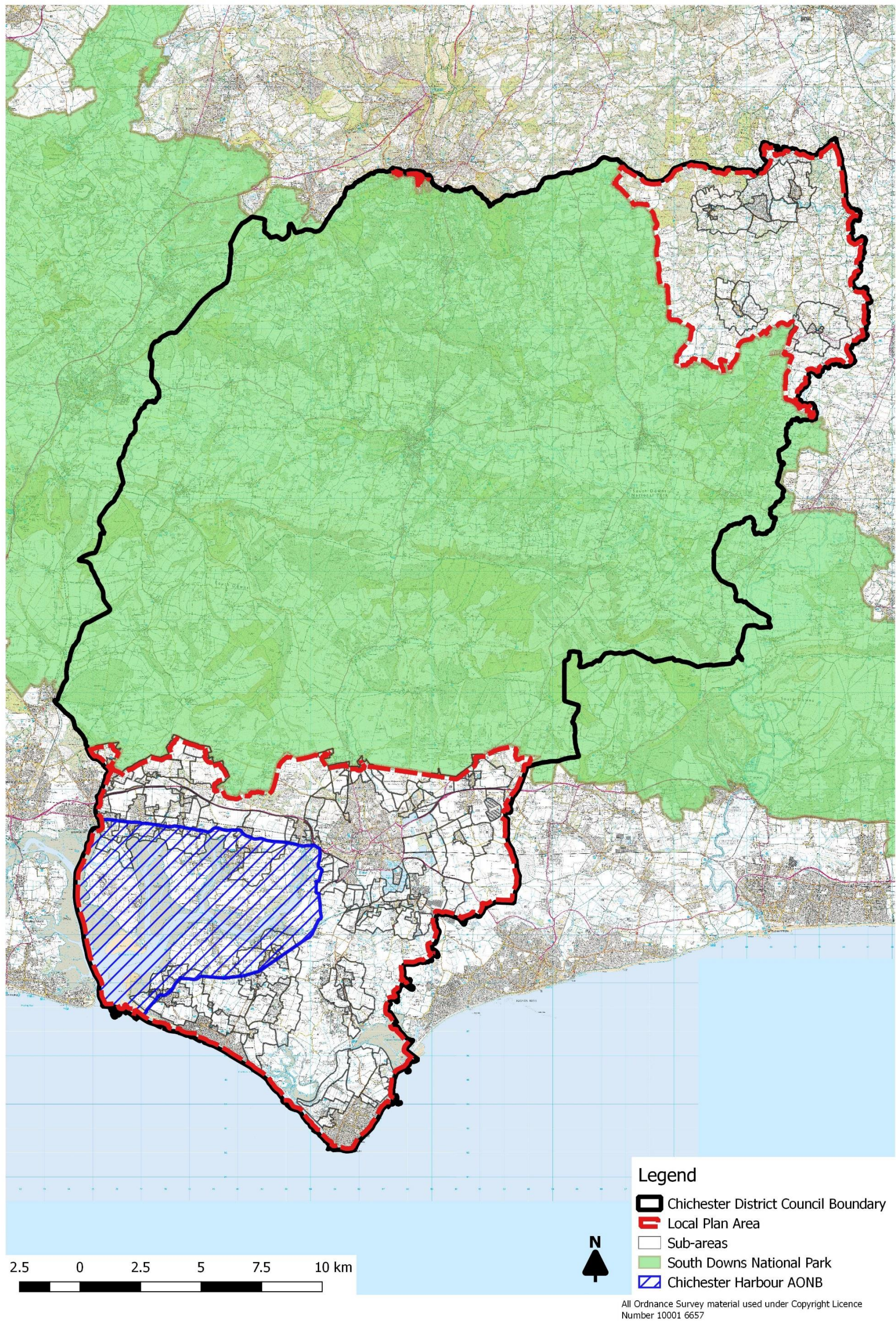


Figure 3 South Downs National Park constraints

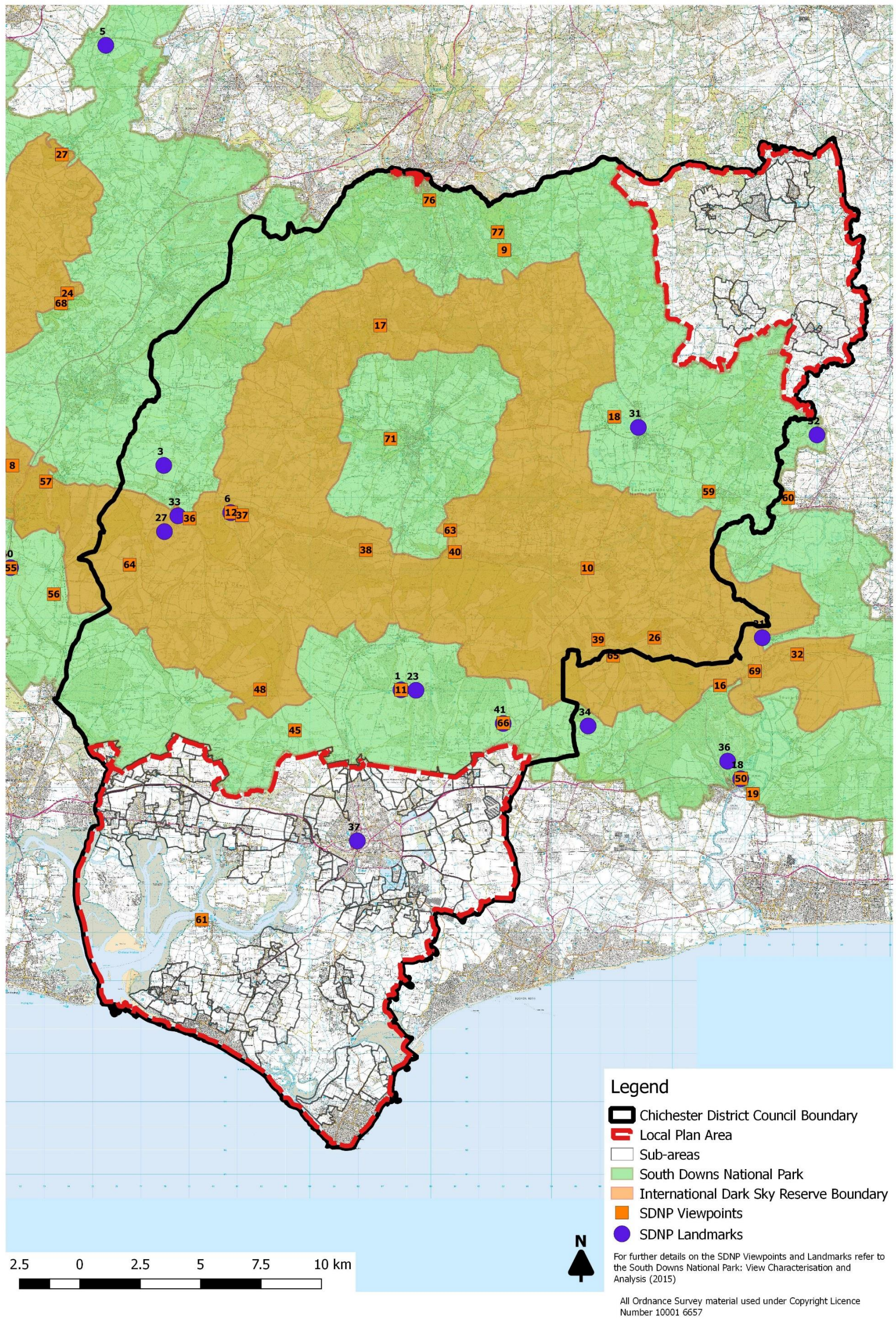


Figure 4 Landscape character areas

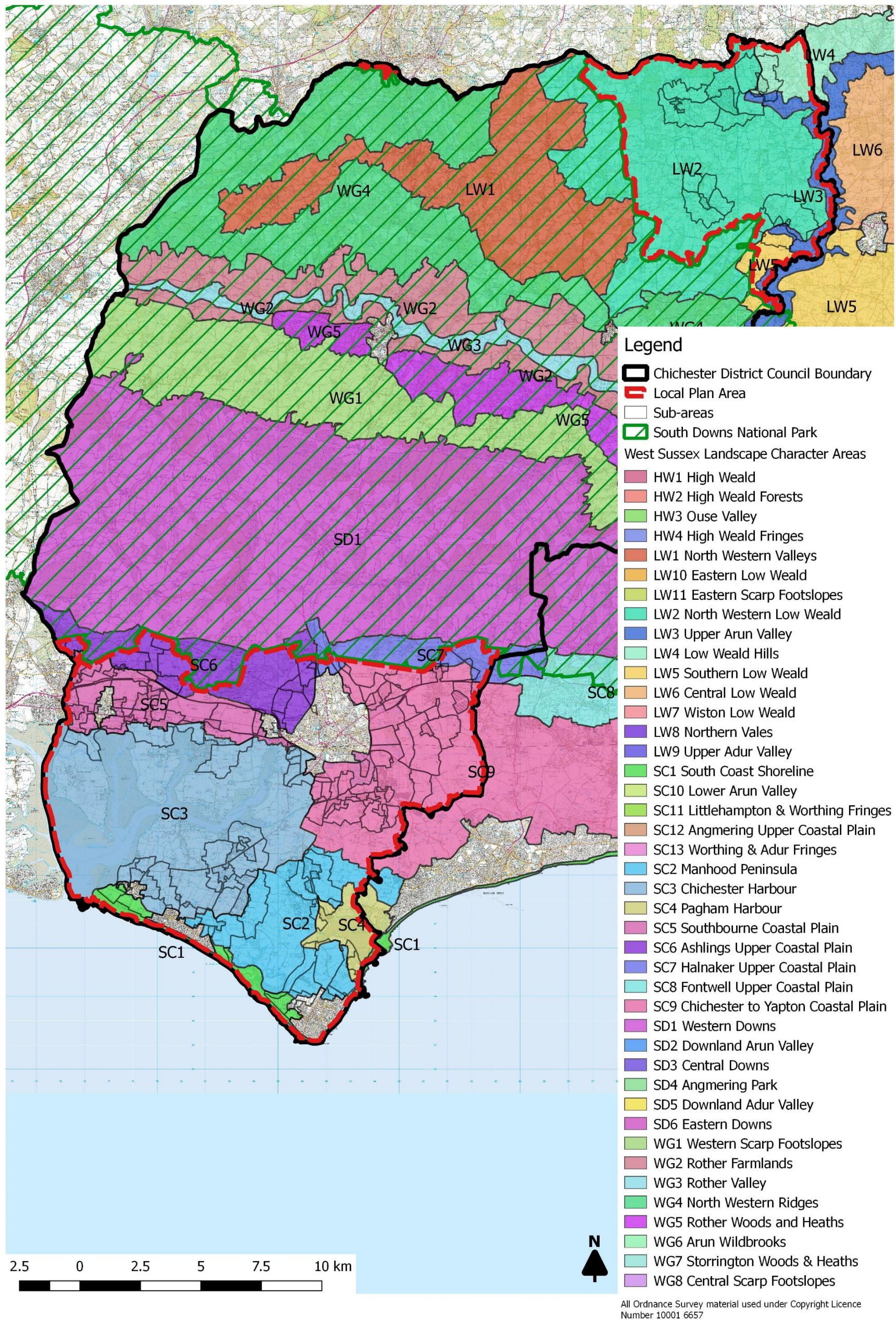
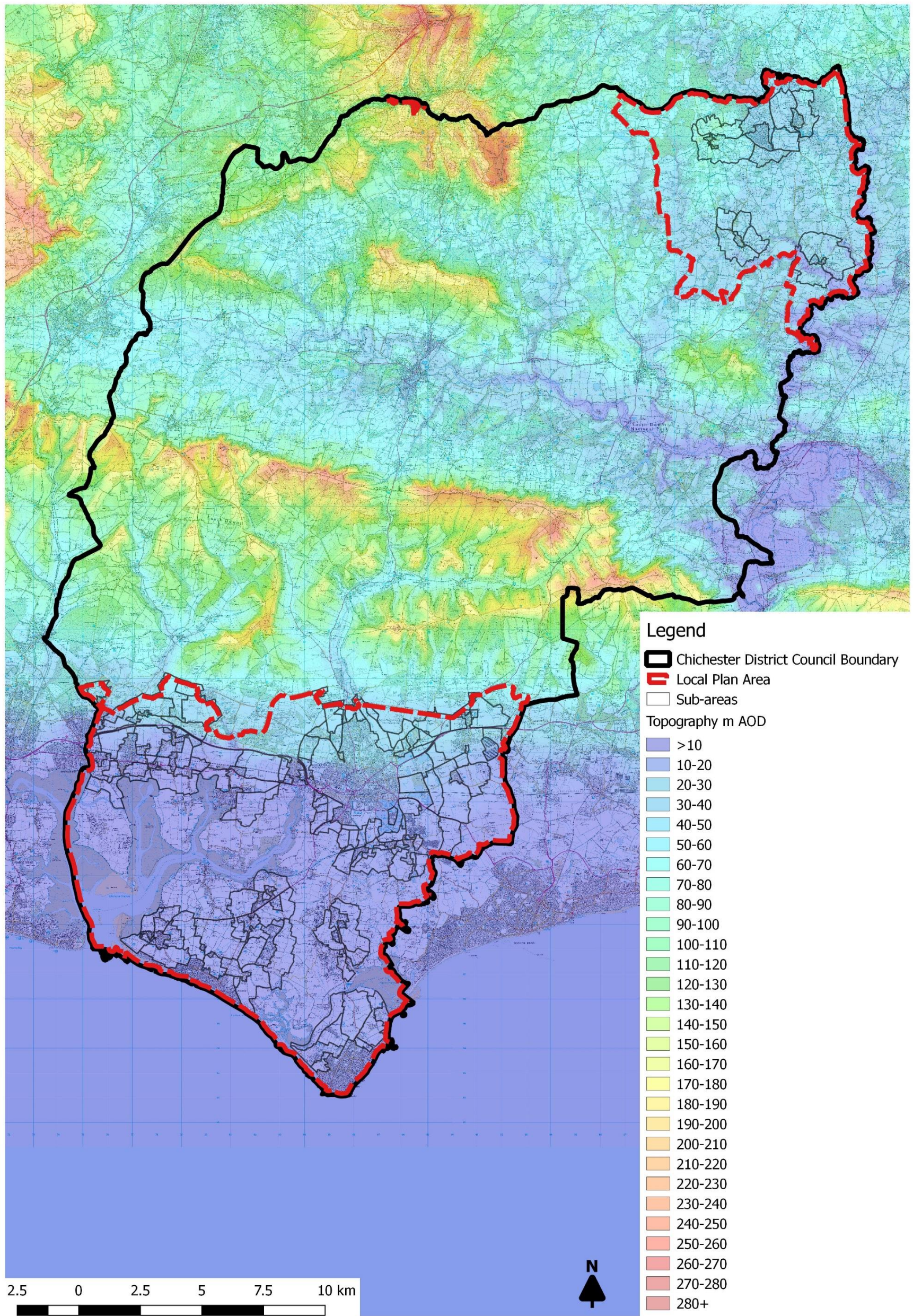


Figure 5 Topography



All Ordnance Survey material used under Copyright Licence Number 10001 6657

Figure 6 Nature conservation

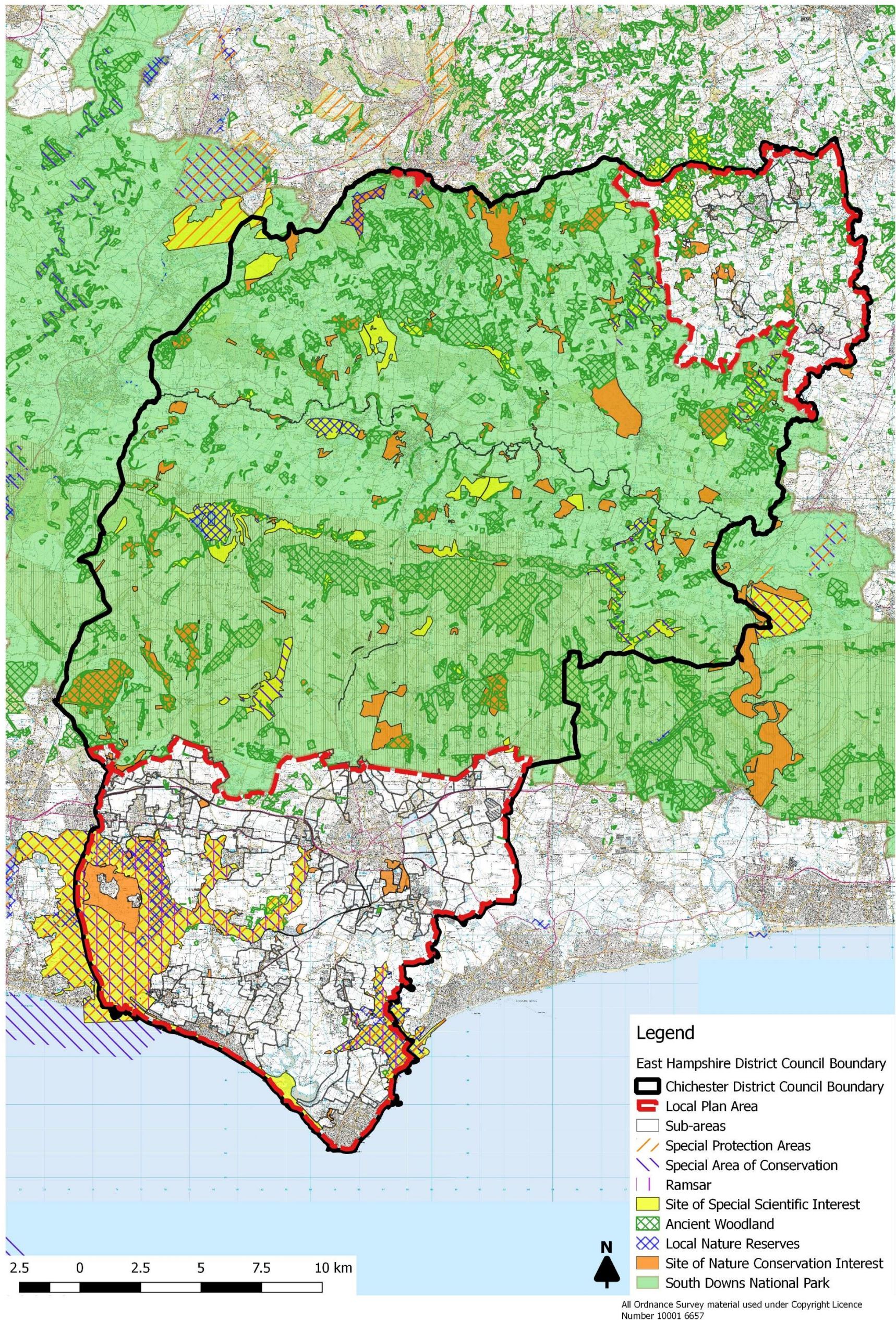


Figure 7 Historic Designations

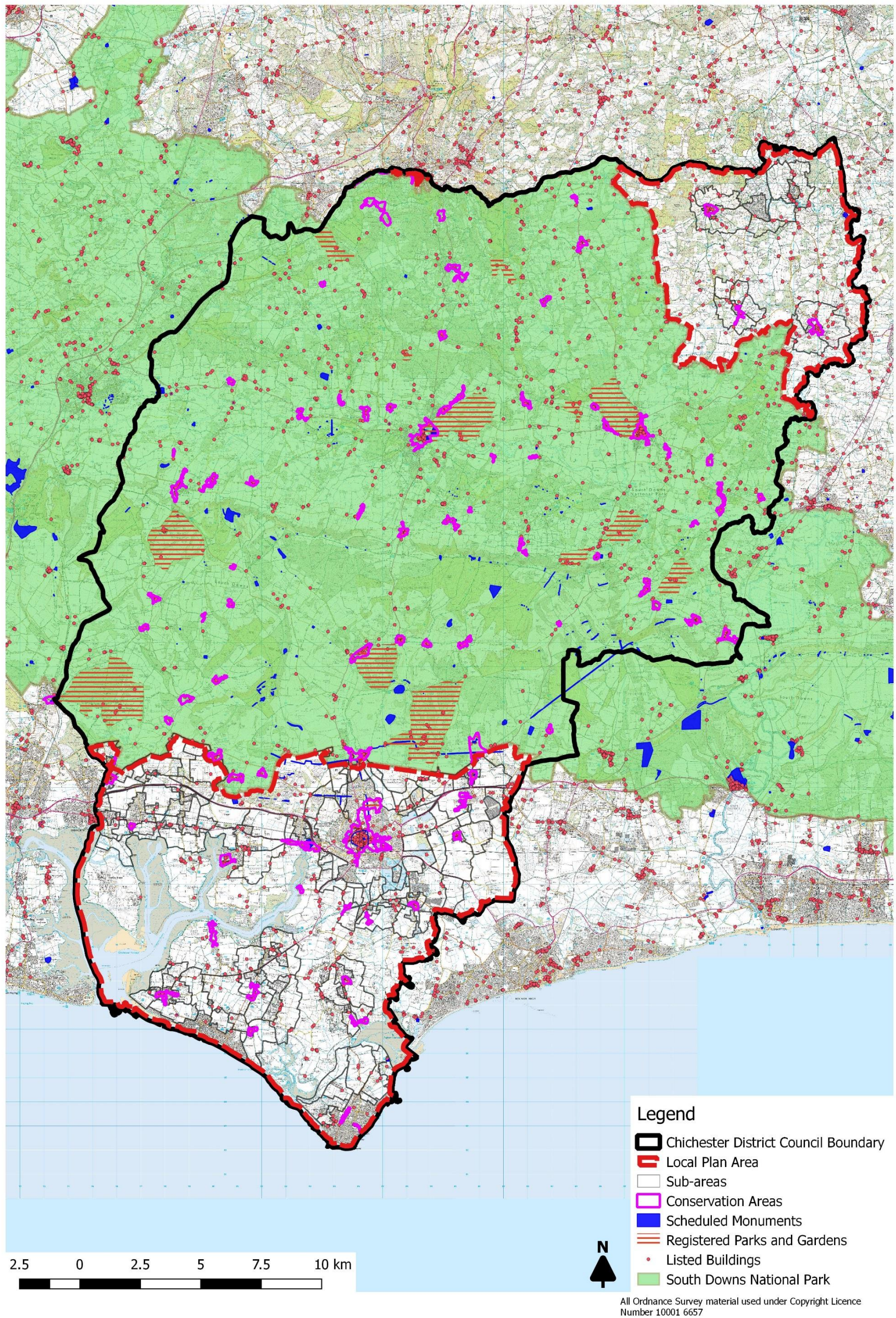


Figure 8 Public access

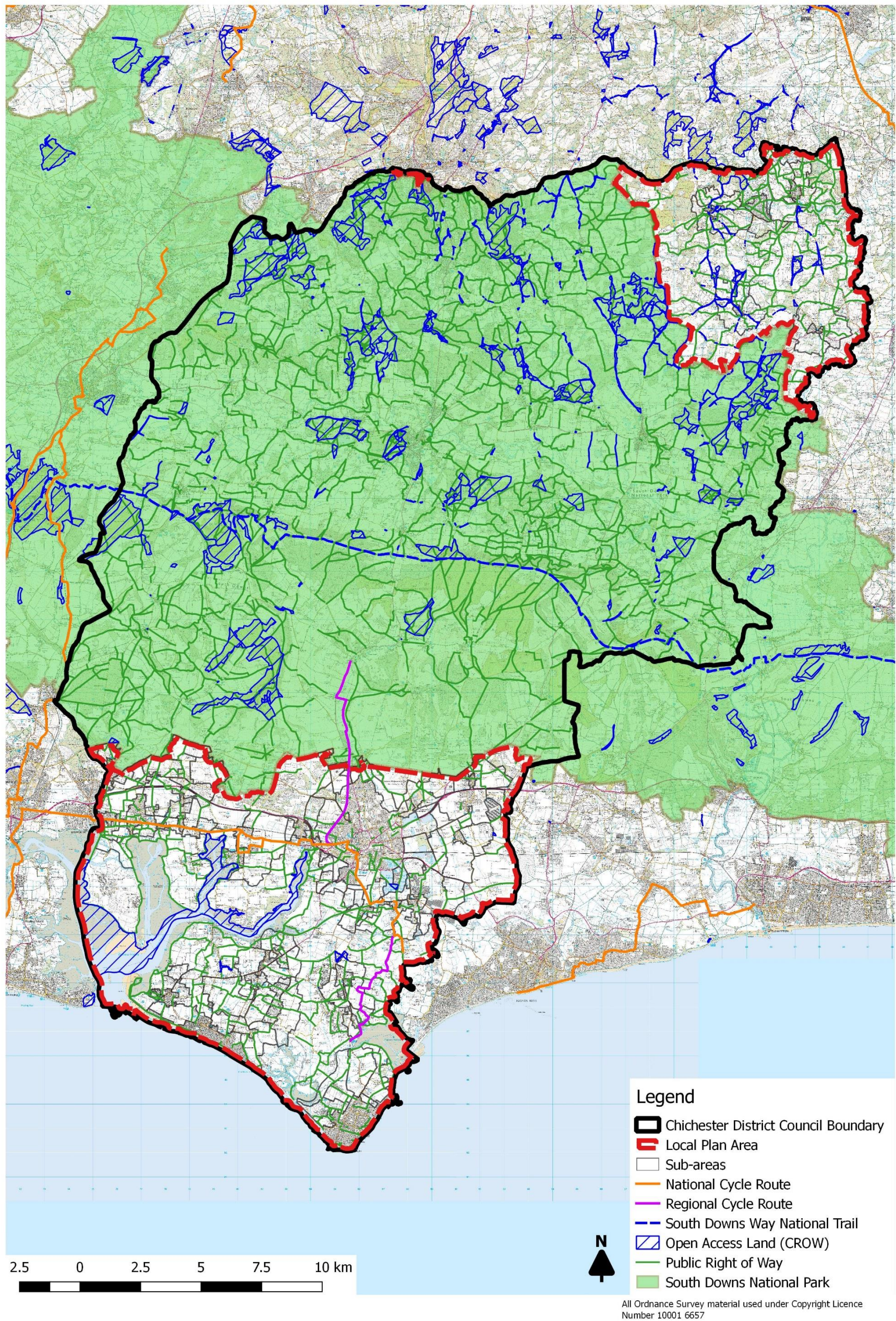
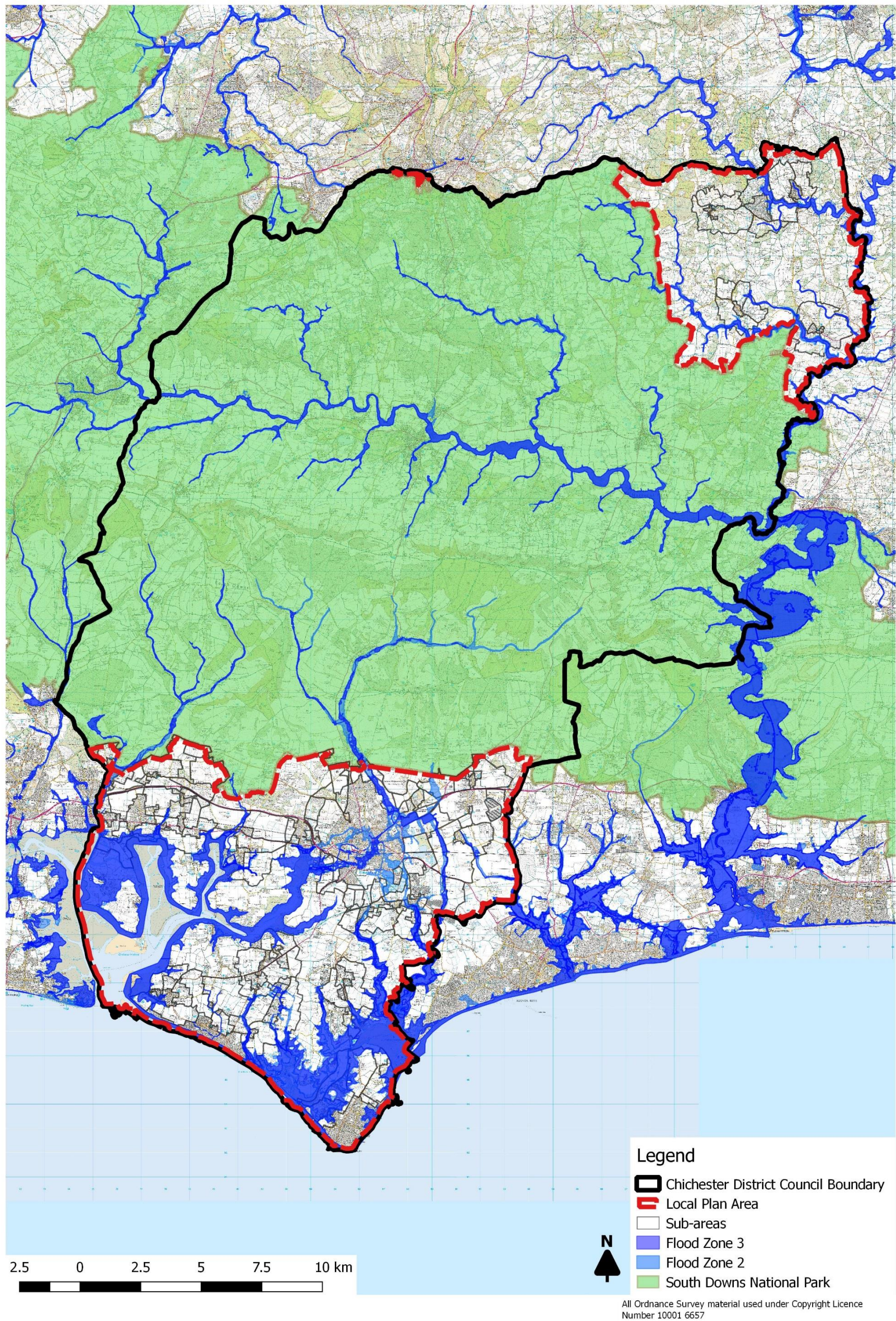


Figure 9 Flood zones



Appendix B Bibliography

- *An Approach to Landscape Character Assessment (2014)*
- *South Downs Integrated Landscape Character Assessment (SDILCA): 2011*
- *The Future Growth of Chichester: Landscape and Visual Amenity Considerations (Land Use Consultants, April 2005)*
- *Chichester District AONB Landscape Capacity Study (Hankinson Duckett Associates, October 2009) Chichester District Landscape Capacity Study Extension (Hankinson Duckett Associates, August 2011)*
- *West Sussex County Council Landscape Character Assessment (2003)*
- *Landscape Character Assessment Guidance for England and Scotland (2002)*
- *Chichester Harbour AONB Management Plan 2014-2019*
- *South Downs National Park Background Paper on Landscape (September 2017)*
- *South Downs National Park: View Characterisation and Analysis (2015)*
- *Sussex Historic Landscape Characterisation (2010)*

Appendix C Glossary

AOD	Above Ordnance Datum
AONB	Area of Outstanding Natural Beauty
Assart	A piece of land cleared of trees and bushes in preparation for cultivation
BOA	Biodiversity Opportunity Area
BAP	Biodiversity Action Plan
Copse	An area of closely planted trees
EIA	Environmental Impact Assessment
GLVIA	Guidelines for Landscape and Visual Impact Assessment (Landscape Institute/IEMA, 2013)
HE	Historic England
LCA	Landscape Character Area
LCT	Landscape Character Type
LDF	Local Development Framework
NDP	Neighbourhood Development Plan
PRoW	Public Right of Way
SM	Scheduled Monument
SNCI	Site of Nature Conservation Interest
SPD	Supplementary Planning Document
SSSI	Site of Special Scientific Interest
VDS	Village Design Statement