



# initiatives

Helping to  
protect our  
environment

Summer events  
and activities

Celebrating  
10 years of  
The Novium Museum



**Win!**  
Be in with a  
chance to win some  
fantastic prizes by  
signing up now

Sign up now for  
initiatives+



**Mobility Scooters** From £729\*

**Wheeled Walkers** From £69.99\*

**Power chairs** From £1,249\*

**Wheel chairs** From £189\*

**Clearwell mobility**  
Making Life Easier

**Chichester Showroom**  
1 Market Avenue  
Southgate, Chichester PO19 1JU  
**01243 839 699**  
(Opposite Law Courts)  
Mon-Sat 9<sup>am</sup>-5<sup>pm</sup>

[www.clearwellmobility.co.uk](http://www.clearwellmobility.co.uk)  
\*Prices quoted exclude VAT and are available to customers with a long term medical condition.

**FREE 2022 Brochure** NEW!

Name \_\_\_\_\_  
Address \_\_\_\_\_  
Postcode \_\_\_\_\_  
Post to: FREEPOST CLEARWELL MOBILITY

**Lloyds Tree Surgery**  
ALL ASPECTS OF TREE SURGERY UNDERTAKEN

**HEDGE AND TREE CUTTING SERVICE**

**Tree Felling**      **Stump Grinding**  
**Hedge Cutting**    **Crown Lifting**  
**Crown Reductions** **Pollarding**  
**Trees with T.P.O's**

NPTC Certified    Insured    Free Estimates  
Domestic & Commercial work carried out

**CALL LLOYD FOWLER**  
**01243 389168 or 07711 653401**  
[www.lloydstreesurgery.com](http://www.lloydstreesurgery.com)

# Welcome to the summer issue of initiatives

You can also read on page 6 how our new temporary accommodation is already making a huge difference to those who are at risk of homelessness. One gentleman was so relieved to have somewhere to stay that he was overcome with tears. This is a project that the council is immensely proud of and one that will deliver vital support for many years to come.

We've also produced a four page update on the progress of the Local Plan from pages 8 to 11. This is one of the most complex and challenging pieces of work we have ever embarked on and so the article attempts to not only update you, but answer many of the frequently asked questions related to the plan. We hope you find this useful.

You can also read about the actions we have been taking to help tackle climate change on pages 18 and 19. In 2021, we adopted a Climate Emergency Action Plan, in which we set a target of a 10% reduction in greenhouse gas emissions year on year until 2025 for both the council and for the Chichester District as a whole. This article highlights the significant work that has been taking place across the council on this important issue.

These are just a few of the highlights from this issue. We hope you find the magazine useful and are always keen to hear your feedback – just email [publicrelations@chichester.gov.uk](mailto:publicrelations@chichester.gov.uk) We would also like to thank our advertisers who cover the print, design, print and distribution costs of the magazine each issue.

I hope you have a lovely summer!

Best Wishes  
Cllr Elizabeth Hamilton  
Chairman

## Contents

### Features

Culture Spark ignites a year of cultural celebrations	4
New short stay accommodation is already making a difference	6
Working hard to progress the Local Plan	8-11
Keeping the district safe – The Community Safety Partnership	16
Keeping people safe on our shores this summer	20

### News

Improvements to textiles, small electricals and coffee pod recycling trial	14
Safe and easy ways to pay	16
New Weigh Better Life courses	22
Stop Smoking Service	22
Working together to make a healthier, happier workplace	22

### Cover stories

Celebrating 10 years of The Novium Museum!	4-5
What's On – summer events and activities	12-13
Helping to protect our environment	18-19

**We'd like to thank our advertisers for covering the design, print and distribution costs of this magazine**

**Follow us**

**District Council offices**  
**East Pallant House**  
1 East Pallant  
Chichester  
West Sussex  
PO19 1TY  
Tel: 01243 785166 Fax: 01243 776766  
Internet: [www.chichester.gov.uk](http://www.chichester.gov.uk)  
Email: [helpline@chichester.gov.uk](mailto:helpline@chichester.gov.uk)  
Emergencies out of hours: **01243 785339**

Corporate member of Plain English Campaign  
Committed to clearer communication **447**

**This publication is available in large print. Please telephone 01243 534679 for further details.**



# Celebrating 10 Years of The Novium Museum

We are incredibly proud of our award-winning museum and what it has achieved over the past 10 years. Here, we look back at some of its highlights to date!

Over the last decade, The Novium Museum has established itself as a much-loved visitor attraction in the heart of Chichester's city centre. Exploring the district's rich heritage, from before the Romans to the frontiers of space, the museum offers something for everyone to enjoy.

Believe it or not, the origins of a local museum in Chichester can be traced back to the 1830s. However, it wasn't until the 1960s that Chichester City Museum was established in a disused corn mill in Little London, and later became known as Chichester District Museum.

The museum was located in Little London until 2012, when a new purpose-built museum was constructed over the remains of Chichester's Roman bath house. It was named The Novium Museum, which is short for Chichester's Roman name, Noviomagus Reginorum.

With specialist environmental control, showcasing and storage, The Novium Museum allowed us to vastly improve the care and display of the collection. With more space we have been able to expand our award-winning learning programme

and run a wide range of events for our visitors. A big factor in building the new museum was accessibility - a large portion of the museum in Little London was completely inaccessible, but now the museum's large 'space rocket' lift means that everyone is able to enjoy the museum.

The museum is free to visit and also houses Chichester's Tourist Information Centre. It offers an ambitious learning and outreach programme including workshops delivered at the museum or in school classrooms; sleepovers; loan boxes; and, digitally innovative virtual field trips. The museum also runs the popular annual Chichester Roman Week festival every May half term in partnership with cultural organisations from across the district.

The museum has launched an exhibition celebrating its 10th anniversary, which runs until 17 September. This looks back at key moments and exhibitions from the last 10 years and prompts visitors to share their own most memorable moments and leave their thoughts on the future of the museum.

For more information, visit [www.thenovium.org/noviumat10](http://www.thenovium.org/noviumat10)



The team at The Novium Museum



Chichester; and even more impressively 200 years of the Chichester Ship Canal Trust.

Inspired by these anniversaries, Culture Spark aims to bring people together to celebrate the district's rich cultural offering and showcase work by the next generation of local creatives, thanks to initial investment into the project from Chichester District Council, Chichester Festival Theatre and Pallant House Gallery.

Caroline Sharman-Mendoza says: "I would like to thank our Culture Spark sponsors, Stagecoach and Rathbones Group Plc, for their support. The season has been fantastic so far and there are still plenty of events and activities for people to look forward from now until October."

The full programme of events can be found at [www.thegreatsussexway.org/culture-spark-2022](http://www.thegreatsussexway.org/culture-spark-2022)



## Culture Spark ignites a year of cultural celebrations

Culture Spark 2022 has officially ignited with events taking place across the district.

The season of events launched in March and since then communities across the district have been enjoying an exciting range of cultural activities and entertainment, including the fantastic Carnival of Lights lantern parade and the touring photographic exhibition 'We the People'. The good news is that the celebrations are due to continue until October!

Celebrations have also been taking place to recognise 60 years of Chichester Festival Theatre; 40 years of Pallant House Gallery; 30 years of Chichester Cinema at New Park's International Film Festival; 10 years of The Novium Museum and The Festival of

## Highlights from the last 10 years



### 2012 The Novium Museum opens its doors

One of Britain's best-known authors and Chichester resident, Kate Mosse, officially launched The Novium Museum in

summer 2012, a few days before the museum opened its doors to the public on Sunday 8 July 2012. The museum was built to showcase Chichester's Roman bath house remains.

Hundreds of people visited The Novium Museum on its opening day. Time Team archaeologist, Phil Harding, welcomed our Golden Ticket winners, who were the first people to experience the museum.

### 2014 The museum receives accredited museum status

This is the UK industry standard for museums and galleries, guiding our future collections care policies and providing access to a wider range of potential grant opportunities.



### 2015 The 24-hour inventive factory

In 2015, we won a public vote with our suggestion to run a '24 Hour Inventive Factory' at The Novium

Museum, as part of the national Museums at Night Festival.

For the first and only time, the museum was open for a full 24 hours and became a bustling hub of creativity. Different areas of the museum became the backdrop for artists, musicians and performers chosen by Turner Prize-nominated artist Yinka Shonibare MBE.



### 2016 The first Chichester Roman Week is launched

Working in partnership with organisations from across the district, the award-

winning annual festival brings Chichester's Roman heritage to life with a variety of events at The Novium Museum and beyond. Our first large scale re-enactment took place in Priory Park in 2018.



### Tim Peake: An Extraordinary Journey exhibition opens

The exhibition opened in December 2016 and ran for 18 months. Tim visited

the exhibition which was accompanied by a large programme of learning and community engagement activities, including space-themed workshops and sleepovers. In 2017, the exhibition won a national Museums + Heritage award for best Temporary or Touring exhibition.



### 2018 'Game Plan: Board Games Rediscovered' opens

This was the first touring exhibition that we have hosted from

a national museum, the V&A Museum of Childhood.

### 2019 The original Bust of King Charles I from Chichester's Market Cross returns home

This important sculpture returned to the city in November 2019 and is on loan to The Novium Museum from Chichester City Council.



### 2020 'Mystery Warrior: The North Bersted Man' exhibition opens

Arguably, the most elaborately equipped Iron Age Warrior grave ever found in England, The North Bersted Man is now on permanent display in the museum following an ambitious exhibition developed in collaboration with a range of world-class experts with support from The National Lottery Heritage Fund, Irwin Mitchell and Berkeley Homes.



### 2020 and 2021 Virtual field trips are launched

Featuring actors and museum experts, these innovative virtual sessions bring high quality museum learning directly into the classroom. Topics include Romans, Toys & Games and Stone Age to Iron Age and each chapter is narrated by Novio, our time-travelling bird! The programme was shortlisted for a national Museums + Heritage Award in the category of Best Learning Programme.



## THE ART OF CHICHESTER 60 YEARS OF CREATIVITY



## The Art of Chichester exhibition opens

'The Art of Chichester: 60 Years of Creativity' is The Novium Museum's latest exhibition. It explores the arts, culture and heritage of Chichester City and the district from 1962 — when Chichester Festival Theatre opened — to the present day. Curated by David Elliott, the exhibition tells the story of how the arts have put the city of Chichester and surrounding areas on the map.

The exhibition has been made possible thanks to an Arts Council England Project Grant of £37,000, which will also enable an exciting programme of community and public engagement activities. These will include a series of art workshops for children and young people led by 'Article 12 Arts' and practicing artists during the

summer holidays; a series of creative family days; and a lecture series for adults.

The Art of Chichester is open now until 25 February 2023. Admission is free with donations gratefully received.

For more information about The Novium Museum, visit [www.thenovium.org](http://www.thenovium.org)

# New short stay accommodation is already making a difference

We're pleased to say that our new short stay accommodation is already making a real difference to the lives of local people who are facing homelessness.

Having opened in March this year, our 17 new flats are now occupied and supporting families, couples, and individuals in need of a temporary home while they get back on their feet.



Official opening of the new accommodation



Cllr Alan Sutton, Cabinet Member for Housing, Communications, Licensing and Events, and Cally Antill, Development Project Co-ordinator

Cally Antill, Development Project Co-ordinator at Chichester District Council, says: "It's so heart-warming to see the difference these homes are making to people's lives. I've been there when families have moved in and realised that not only do they have a roof over their head and a place to feel safe and regroup, but that the home is modern and a welcoming place to be. One gentleman was so relieved to have somewhere to stay that he was overcome with tears.

"What's important to remember is that any one of us can struggle and go through difficult times. It's scary how quickly any of us could find ourselves in need of this type of support."

Councillor Alan Sutton, Cabinet Member for Housing, Communications, Licensing and Events at Chichester District Council, says: "Making sure that our residents have a roof over their head and the financial support that they need is a top priority for us as a council.

"We know that there are people in our district who are facing homelessness and

this project provides a warm, safe, and high-quality home environment for them, as well as a platform upon which they can start to rebuild their lives.

"With rising energy bills, the increased cost of rent in the private sector, and the number of people who are experiencing debt accumulated during the pandemic, there are more people than ever who are worried about homelessness, making this project even more important.

"We've refurbished six bedsits that had shared facilities in our existing accommodation to provide three more 1-bedroom self-contained flats, one of which is an accessible flat for any resident who may use a wheelchair. In addition, the new building offers 13 studio flats, three 2-bedroom flats and one 1-bedroom flat, which is wheelchair accessible.

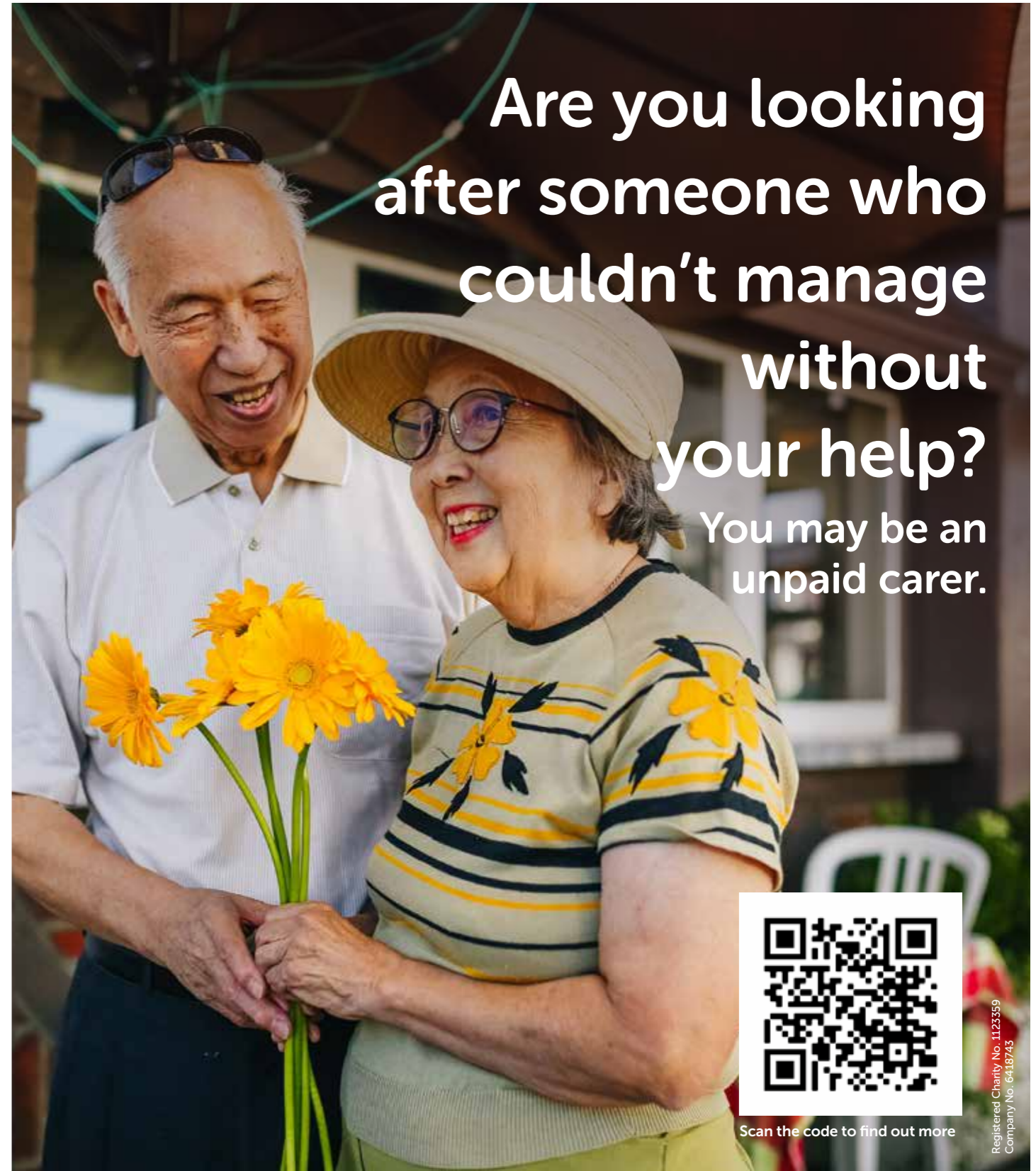
"All of the flats are modern and energy efficient, and we know that this is going to make a huge difference to those who find themselves at risk of homelessness for many years to come."

If you haven't already, make sure you visit [www.chichester.gov.uk/freelandcloseproject](http://www.chichester.gov.uk/freelandcloseproject) to watch a video that we have created to explain why this project is so vital and to give a short tour of some of the accommodation.

The new building features some eco-friendly credentials, which form an important part of this project. This includes solar panels on the roof to generate renewable electricity, which will be used to supply electricity to communal areas to help reduce the running costs of the building. These features link to how the council is working to help tackle the effects of climate change within the district, and forms part of its Climate Emergency Change Action plan.

This work to increase the amount of much-needed short stay accommodation fits into a wider programme of support that we can offer people who are facing homelessness. You can find out more information about the different initiatives we have introduced at [www.chichester.gov.uk/freelandcloseproject](http://www.chichester.gov.uk/freelandcloseproject)

Are you looking after someone who couldn't manage without your help? You may be an unpaid carer.



Scan the code to find out more

Registered Charity No. 1123359  
Company No. 6418743

## Supporting you

Whether you are struggling to pay bills, feel isolated, or are concerned about rising energy costs, we have a range of support available to you. This leaflet aims to highlight some of the key schemes you can access.

You can find this at [www.chichester.gov.uk/helpwithfinances](http://www.chichester.gov.uk/helpwithfinances)

Also, look out for our new 'Supporting you' campaign, which aims to offer more information and help.



We provide unpaid carers with information and guidance, along with practical and emotional support, so they feel valued and supported in their caring role.

One of the ways we help is with hospital admissions, navigating hospital processes, accessing assistive equipment, and post-discharge support when leaving hospital.

Talk to us about the help you need:

Visit [carerssupport.org.uk](http://carerssupport.org.uk)  
Email [info@carerssupport.org.uk](mailto:info@carerssupport.org.uk)  
Call 0300 028 8888



At the hospital: Ask hospital staff or one of our hospital team (they're in purple t-shirts).





## We're working hard to progress the Local Plan

We're busy pulling together the Chichester Local Plan – and we are working hard to find solutions to the various issues we face.

As you know, this has been one of the most challenging pieces of work we have ever embarked on, mainly due to issues we have faced with the roads, wastewater and water neutrality.

Before any council submits their Local Plan to the Planning Inspector, they must show that they have tried and tested every possible way to reach the housing numbers set by Government. No stone can be left unturned. This means that the work that we have carried out to date is vital in demonstrating the complex situation we are in.

Due to the significant road improvements required and the fact that insufficient funding is available to deliver this, we have explained that the plan is unlikely to meet the full housing targets set by Government. Instead, we are working closely with National Highways and West Sussex County Council to establish a revised Development Strategy based on improvements that can be delivered to the A27 during the plan period.

We have also held discussions with Southern Water, which is responsible for

wastewater, and the Environment Agency, which is responsible for enforcing the discharges into the harbour from premises that require permits, such as wastewater treatment plants. We have worked with both organisations to agree a position through a Statement of Common Ground.

Natural England's requirement that development within the northern part of our plan area must be 'water neutral' is a very recent, complex issue that will take time to resolve.

In partnership with a number of other councils across the county and the South Downs National Park Authority, we have commissioned a water neutrality study which covers the northern part of our plan area. This study is crucial to the plan to enable us to complete the Habitat Regulations Assessment and provide us with solutions in relation to water consumption to allow new homes to be built.

Effective and ongoing engagement and cooperation with these external agencies is vital. Based on the evidence we are presenting we need our partner agencies to agree what levels of development are deliverable within the infrastructure and funding constraints that we face. As we've said before, these are all issues that are unfortunately outside of our control.

A Planning Inspector has previously explained to us that before concluding that our housing needs cannot be met by the Local Plan, we need to determine what level of housing could be achieved based on deliverable improvements to the A27; whether our full housing needs could be met another way, which would include looking back at other parts of the local plan area; and investigate if neighbouring authorities can help meet our housing needs. We have followed the advice given to us and are reviewing our housing numbers to show what we believe is achievable with the existing challenges we face.

Once we have the final pieces of evidence that we need, we will be ready to consult with you and submit the plan for independent examination. The feedback you provide us will be packaged alongside the plan and submitted to the Inspector. The Planning Inspector will then review the plan as part of the examination process. As soon as we are ready to do this, we will let you know. In the meantime, we will continue to update you on our progress.

We really appreciate your patience with this piece of work. Our priority is to do everything we possibly can to get the very best outcome for our district.

## Your questions answered

### What is a Local Plan and why is it needed?

Every council that is responsible for planning decisions is expected to have a Local Plan. The plan sets out the opportunities for development and investment in the area. It also makes clear what types of development will be permitted and what won't. The plan also looks at housing, employment space, required infrastructure, and places where retail and leisure facilities should be provided.

The Local Plan is also expected to identify areas that need to be protected, such as valued countryside, employment land and open spaces. Some of these community assets may also be improved through new development.

Every time we receive a planning application, we look at the Local Plan to assess whether planning permission should be granted.

### Why are you reviewing the Local Plan?

The Local Plan was approved by a planning inspector in July 2015 on the basis that

we would review it again in the short term. This was because the inspector felt that it would need to accommodate more housing in the long term. Since then, the Government has changed the way it calculates future housing needs and we are now expected to take more housing within our area.

### Does your Local Plan cover the whole of the Chichester District?

No – our plan only covers those areas in the district that do not fall within the South Downs National Park. There is a separate plan for the whole of the National Park and this is produced by the South Downs National Park Authority.

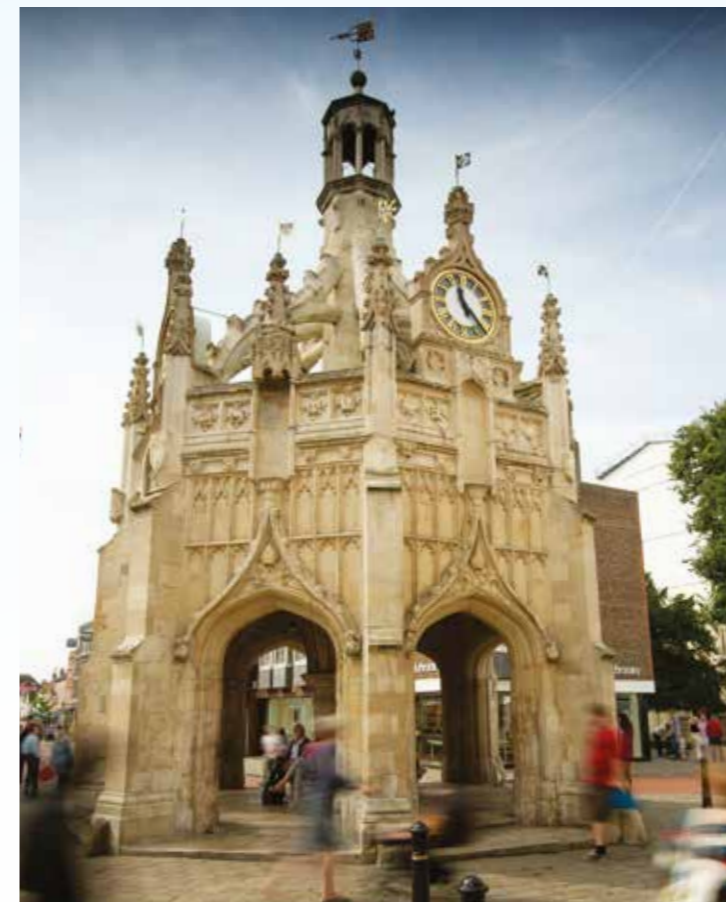
### Why do we need more housing?

There's a high demand for housing and we know that young people are finding it difficult to get on the property ladder as first time buyers or renters. We want those who grow up here to have the option to stay here - and so we need to make sure that there are homes of the right prices and type that will enable us to do this.

There is limited Government funding available for affordable housing. This is why the Local Plan is so important, because it requires developers to deliver a proportion of affordable homes that are suitable for local families and young people who have a local connection. This means that our children and families can continue to live locally and we can attract people to work here, in our hospitals, schools and other essential services.

### How do you identify what development is needed?

It involves looking at where housing could possibly go and what new roads or other infrastructure improvements would be needed. Our Government target is 638 homes each year from 2021 to 2039. However, we have already publicly said that we do not believe that this target is achievable as things stand. Our draft plan intends to demonstrate that an alternative number of homes is the most that can be satisfactorily accommodated within the available and deliverable infrastructure. This will be submitted to the Planning Inspectorate for independent examination in due course.



## Keep in touch

By signing up for our local plan email newsletter:  
[www.chichester.gov.uk/localplannewsletter](http://www.chichester.gov.uk/localplannewsletter)

By visiting our webpages:  
[www.chichester.gov.uk/localplanreview](http://www.chichester.gov.uk/localplanreview)

You can also sign up to our monthly email newsletter **initiatives+** which covers local news and events:  
[www.chichester.gov.uk/newsalerts](http://www.chichester.gov.uk/newsalerts)

## Is the Local Plan just about housing?

The Local Plan isn't just about building new homes and creating new employment opportunities, it has an important role in creating a district that we can all be proud of and that meets local needs.



A key role of the plan is to look at employment space and places where retail and leisure facilities should be provided. This is important because it helps to support the local economy. As jobs are created, earnings are increased, productivity is raised, living standards are improved, aspiration and skills are increased, the housing needs of local people are met, and better quality of services and facilities for those living in and visiting our area are provided. The plan will also work alongside the Chichester Vision to help support the day and night time economy.



We are incredibly lucky to live and work in such a beautiful and biodiverse area, and we want to keep it that way. The Local Plan looks to identify areas that need to be protected, such as valued countryside and open spaces. We have also produced a policy to protect wildlife corridors, which is the first time this type of initiative has been introduced. The plan also takes into account the impacts of climate change, including the importance of mitigating flood risk associated with new development. The National Planning Policy Framework puts a requirement on developers to consider the impacts of existing and future flood risk, from all sources including sea and rivers, for the lifetime of a development.



This looks at how we move in and around the plan area. This includes making sure that the right roads and transport networks are in place. This is not a simple exercise because it requires us to carry out detailed assessments, accounting for all sorts of things, from the environmental impact, to local economic needs. It's also important to point out that although this is included in the Local Plan, we are not the agency responsible for roads and transport.



The Local Plan has an important role to play in helping to support the health and wellbeing of our residents. We work closely with health care providers to identify what additional health facilities may be needed in areas where additional housing is being considered. If needed, financial contributions from developers, or land provided by the developer on a new site, can be used to ensure everyone has access to healthcare. The Local Plan also considers how developments should be designed to support a healthy lifestyle, with safe places to walk and cycle, and offering access to green spaces and sport and leisure facilities, all of which can help physical and mental wellbeing.



For each new home built, the Government gives the council a financial payment. Some of this money is ring fenced for those communities that deliver new homes. This is then used to improve their local facilities, for example the creation of a village hall or play area.

In addition to this, the Local Plan policies and community infrastructure levy means that developers have to pay a financial contribution, or provide infrastructure, for every property they build. This money is already being invested in villages and towns that are taking new developments, with new community facilities.



The Local Plan area has a good supply of pre-school, primary school and secondary school facilities. It is important to make sure that there is capacity within these schools to accommodate pupils from new development provided through the Local Plan. We work closely with West Sussex County Council, which is the local Education Authority, to determine whether further capacity would be required and if it is, whether this can be delivered through the expansion of existing facilities or whether new schools are needed as part of a new development. New provision will usually be secured through developer contributions. In addition, Chichester College and the University of Chichester are both within the Local Plan area. These

provide further and higher education facilities that offer opportunities for people to develop their skills and progress their learning. This can have an important and positive impact on the local economy by generating a more skilled and varied workforce and providing a range of jobs in each of the facilities.



Our area offers a wealth of arts, culture and heritage, and the Local Plan plays a vital role in protecting not only historic buildings and features, but also community facilities, such as museums and galleries. Where development is proposed that could affect a particular asset, Local Plan policies can normally protect it as part of the overall development. The Local Plan can also promote new facilities that not only benefit existing residents but will encourage visitors to the area. Where there is an identified need associated with new development, the Local Plan can help to make sure this is provided, either on-site or through developer contributions.



In order to deliver the Local Plan, the right services and facilities need to be in place. One of the biggest issues facing the plan is the need for more wastewater capacity. Wastewater has long been a problem in the South of the district and we have been lobbying Southern Water to explain what improvements are required for some time. We have been holding constructive meetings with Southern Water and the Environment Agency. Southern Water has agreed to work with us jointly on identifying improvements that need to be made.



## Has the council challenged the housing targets set by the Government for the plan area?

Yes. Since our Local Plan was adopted in July 2015, the Government has changed the way it calculates future housing needs and this means that we are now expected to take more housing within our area.

Over the past few years, we have sent letters and been involved in meetings with Government officials to explain the complex issues we face in our area. In fact, our Council Leader and Chief Executive, along with Gillian Keegan MP, have in the past met with the Minister for Housing to discuss these issues and to request that we are treated as an exceptional case. Unfortunately, our request was not agreed. It was also made clear by the Minister that if we believe that the evidence we collect shows we cannot meet our full housing needs, then the Local Plan may be submitted for examination on that basis. However, the Inspector assessing our plan must have evidence that demonstrates, in planning terms, what can and cannot be achieved. This also needs to demonstrate that all available options have been considered.

Our officers have been working hard to investigate how the targets might be achieved and to gather evidence. If our evidence shows that certain things are not possible, the Inspector will take this into consideration when reviewing the housing need that we have been set by Government.

## Is the Government allocating our Local Plan area more than its fair share of housing?

When the Government calculates housing requirements for each area, affordability is considered as an important factor. Average pay and average house prices are compared, and each area is then given a ratio. Our area has one of the highest ratios of house prices to wages outside of London, which explains why the housing allocation seems high.

The role of the Local Plan is to explore whether this allocation can be met, and if the evidence shows that this isn't possible, the Planning Inspector will consider this when reviewing our Local Plan and the Government's housing requirement may be reviewed.

## Will you help ensure local people can buy and stay in the area?

There's a high demand for housing and we know that young people are finding it difficult to get on the property ladder as first time buyers or renters. We want those who grow up here to have the option to stay here - and so we need to make sure that there are homes of the right prices and type that will enable us to do this.

It's important to point out that there is limited Government funding available for affordable housing. This is why the Local Plan is so important, because it requires developers to deliver a proportion of affordable homes that are suitable for local families and young people who have a local connection. This means that our children and families can continue to live locally and that we can attract people to work here, in our hospitals, schools and other essential services.

# What's on?

## Venue codes and useful numbers

### AA

Air Aces  
01243 823007 or  
[www.airaces.org.uk](http://www.airaces.org.uk)

### CC

Chichester Cathedral Concert  
[www.chichestercathedral.org.uk/music](http://www.chichestercathedral.org.uk/music)

### CFT

Chichester Festival Theatre  
[www.cft.org.uk](http://www.cft.org.uk)

### CHC

Chichester Harbour Conservancy  
[www.conservancy.co.uk](http://www.conservancy.co.uk)

### DS

Destination Selsey  
[www.destinationseley.co.uk](http://www.destinationseley.co.uk)

### EP

[www.emmottpromotions.com](http://www.emmottpromotions.com)  
07960 502508

### ME

Mulberry Marine Experiences  
01243 601000 or  
[www.mulberry-me.co.uk](http://www.mulberry-me.co.uk)

### NOV

The Novium Museum  
01243 7775888 or  
[www.thenovium.org](http://www.thenovium.org)

### WD

The Weald & Downland Living Museum  
01243 811363 or  
[www.wealddown.co.uk](http://www.wealddown.co.uk)

**Tickets for a variety of events are available from Chichester Tourist Information Centre at The Novium, Tower Street. For more information contact 01243 775888.**

While every effort has been made to make sure the accuracy of this information is correct, Chichester District Council cannot accept responsibility for any errors, omissions or inconvenience caused. We would advise you to check the details with the organiser before attending any of the events published.

**Apologies to those people who will get the magazine after some of the events listed. The list runs from when the first deliveries of 'initiatives' are made, but delivery to all properties normally takes two weeks.**

## Every week or seasonal

### Traders Market

Cattle Market Car Park, Chichester:  
Every Saturday

### Chichester General Market

North and East Street,  
Chichester: Every Wednesday

### Farmers' Market

North and East Street, first and third  
Friday of the month from February.

### Parks and Gardens

Upcoming events taking place in our  
parks can be found here:

[www.chichester.gov.uk/parksandopenspacescalendar](http://www.chichester.gov.uk/parksandopenspacescalendar)

### Chichester Cinema at New Park

A varied programme of films, ballet,  
opera, theatre and art from around  
the world screened daily throughout  
the year. See the full list at  
[www.chichestercinema.org](http://www.chichestercinema.org)

### Until 4 September 2022

**Crazy For You.** The Gershwin musical  
comedy starring Charlie Stemp. CFT

### Until 6 September 2022

**Together We Rise.** Exhibition of  
artwork from celebrated members of  
the Royal Society of Sculptors. CC

### Until October 2022

**Culture Spark** events across the  
district. The full programme can be  
found: [www.thegreatsussexway.org/culture-spark-2022](http://www.thegreatsussexway.org/culture-spark-2022)

### Until 25 February 2023

**The Art of Chichester: 60 years of creativity.** An inspiring exhibition  
celebrating sixty years of art and  
culture across the district. Free  
admission, donations appreciated  
NOV

### From 13 July

#### Watercolour Classes.

Every Wednesday and Friday.  
12.30pm–3.30pm. Roussillon  
Park Community Hall,  
Chichester. 01243 538304 or  
[www.johnhillwatercolour.com](http://www.johnhillwatercolour.com)

### 14 July

**Marine Life Walk.** Oval Field, Selsey.  
DS

### 17 July

**Chichester's Summer Street Party and Cross Market & More.**  
Chichester city centre. 10am to 4pm.  
[www.facebook.com/ChichesterDistrictEventsAndMarkets](http://www.facebook.com/ChichesterDistrictEventsAndMarkets)

### 17 July

**Mulberry Marine Experiences July Beach Clean.** Selsey Lifeboat Station, Kingsway, Selsey. DS

### 17 July

**Selsey Shanty Men.** Selsey Lifeboat Station, Kingsway, Selsey.  
2–3.30pm. DS

### 26 July

**Old Herbaceous.** Acclaimed one man play about a single-minded yet gentle man with a passion for plants. WD

### 27 July and 3, 8, 17, 24, 31 August

**The Art of Chichester Summer Art Series.** NOV

### 30 and 31 July

**Working the Land - Feast of the Finest Fruits.** One of Weald & Downland Living Museum's Historic Life Weekends, exploring traditions at 'Lammas'. WD

### 31 July

**Jazz, Gin and Blues.** Eclectic line up of jazz and blues artists, local gin stalls and heritage food & drink. Loxwood Meadow, Loxwood. 12pm-8pm. For tickets and information: [www.jazzginblues.co.uk](http://www.jazzginblues.co.uk)

### 1–31 August

**Wonderful Weeks.** An exciting programme of family fun and activities every day of the week throughout August at Weald & Downland Living Museum. WD

### 1, 8, 15, 22 and 29 August

**Children's Marine Ecology Club.** Mulberry Marine Experiences, 9 Orchard Parade, Selsey. DS

### 5 and 26 August

**David Walliams' Awful Auntie, Weald & Downland Living Museum.** Watch the fabulous characters come to life in this adaption for the outdoor stage. Ages 7+ WD

### 6, 7, 13 and 14 August

**The Loxwood Joust.** The UK's most spectacular medieval festival. The Loxwood Meadow, Loxwood

### 10, 17, 24 and 31 August

**Guided Snorkel Tours.** Age 8 + with adult. £55 per person. All equipment provided and no experience needed. Times vary. ME

### 7 and 21 August

**Selsey Shanty Men.** Selsey Lifeboat Station, Kingsway, Selsey. DS

### 7 August

**Lavant Annual Flower Show.** Lavant Memorial Hall, Pook Lane, East Lavant. From 2pm.

### 11 August

**Peter Rabbit & Benjamin Bunny.** An enchanting on stage adaptation of the much loved Beatrix Potter classic at Weald and Downland. Ages 3+ WD

### 11 and 14 August

**Marine Life Walk.** Oval Field, Selsey. DS

### 12 August

**Mulberry Marine Experiences August Beach Clean.** Selsey Windmill, Mill Lane, Selsey. 4pm–6pm. DS

### 13 August

**Geology Day.** NOV

### 13 August

**Blues at the Rectory.** Local Rock and Blues Band 'Milk and One Sugar.' St. Anne's Church, East Wittering. 2pm–4pm. Gates open 12.30 pm. Tickets: Adults £10. Children £2. St Anne's Church.

### 22 August

**James Brindley Nicholson VC, the Battle of Britain VC.** The remarkable story of the only Fighter Command pilot to be awarded the Victoria Cross in WW2, told by his nephew. Chichester Park Hotel. 7.30pm. AA

### 23 August

**The Wind in The Willows.** A floor stomping, hilarious, family friendly on stage re-telling of this classic woodland adventure featuring live music. WD

### 3 and 9 September

**Marine Life Walk.** Oval Field, Selsey. DS

### 4 September

**Antique & Collectors Fair.** The Grange Centre, Bepton Road, Midhurst. 10.30am–4pm. EP

### 6 September

**Lunchtime Concert: Miriam Kramer & Nicholas Durcan.** Violin and piano concert, no booking required. 1.10pm, free admission. CC

### 11 September

**Mulberry Marine Experiences September Beach Clean.** Selsey Lifeboat Station, Kingsway, Selsey. 4pm–7pm. DS

Services we offer at Dovecote View Residential Care Home:

- Long-term Care
- Respite/Convalescence Care
- Day Care

For more information on our services, please call us on **01243 779080** or [www.dovecoteview.com](http://www.dovecoteview.com)



# Together We Rise

ENTRY FREE,  
DONATIONS  
WELCOME

27th June – 6th September 2022  
Explore a major exhibition from celebrated members of the Royal Society of Sculptors at Chichester Cathedral.

[CHICHESTERCATHEDRAL.ORG.UK](http://CHICHESTERCATHEDRAL.ORG.UK)

# RICHMOND HOUSE

SUMMERSDALE - CHICHESTER

Move  
in this  
Summer



SIX EXCEPTIONAL, HIGH SPECIFICATION 2 & 3 BEDROOM APARTMENTS

**ELBERRY**  
PROPERTIES

- Looking to downsize, considering future proofing?
- Seeking easy living that's fully managed?

Register your interest • [elberry.co.uk](http://elberry.co.uk) • 01243 513 740

# Improvements made to our textiles, small electricals and coffee pod recycling trial

We want to make recycling at home as easy as possible, and so last year we introduced a special pilot scheme to enable people in the trial area to recycle their unwanted textiles, broken small electrical items and used coffee pods.

The free kerbside collection trial, which is available to 75% of households in the district, has received a great response and has helped reduce the amount of material being thrown away as general waste. Over the past year, we've completed over 4,400 collections and recycled over 11 tonnes of material!

Following feedback from residents and a review of the trial so far, we're changing the way we collect the items so that people in the trial area can now book their free collection quickly and easily on our website. We've also increased the frequency of collections from monthly to fortnightly.



People won't need to request a special bag for textiles and small electrical items anymore either — the items just need to be tied up securely in a standard plastic carrier bag, keeping textiles and small electricals separate.

The coffee pod collection service, delivered in partnership with Podback, can also be booked online for free. Coffee pod users in the trial area can either sign up for a one-off collection or for regular fortnightly collections without the need to book each time they need a collection. Because plastic and aluminium pods must be kept separate and distinguishable, you will still need to request bags through the Podback website to use this service.

"Making collections bookable will be more convenient for residents and will make for a better and more efficient service, with more frequent collections," says Councillor Penny Plant, Cabinet Member for Environment at Chichester District Council. "Although this is still a pilot, the aim is to monitor and review how things are going to see whether this is something we could expand and roll out to more of the district."



## How to book and use the service

Follow these easy steps to arrange a free collection.

- CHECK IT** — Check to see if you're in the trial area for textiles and small electricals collections at [www.chichester.gov.uk/textileandelectricalrecycling](http://www.chichester.gov.uk/textileandelectricalrecycling) or coffee pod collections [www.chichester.gov.uk/podback](http://www.chichester.gov.uk/podback)
- BOOK IT** — If you're in the trial area, you can use the same links from Step 1 to book your free collection day.
- BAG IT** — Place your textiles and small electricals in a standard plastic carrier bag, keeping textiles and small electricals separate, and tie securely. Place your coffee pods in a designated recycling bag, which can be ordered from: [www.podback.org](http://www.podback.org)
- RECYCLE IT** — Leave your bags outside where it is clearly visible from the roadside, or communal bin area, by 7am on the booked collection day.
- LET US DO THE REST** — You don't need to be in for the collection. As long as the bags are clearly visible, our crew will be able to pick them up and take them away for recycling.

To see if you are eligible for this service and to book a collection, please visit [www.chichester.gov.uk/textileandelectricalrecycling](http://www.chichester.gov.uk/textileandelectricalrecycling) for textiles and small electricals or [www.chichester.gov.uk/podback](http://www.chichester.gov.uk/podback) for coffee pod collections.

## Expert advice on paying for care

Long-term care in your own home or in a residential care home is expensive, but with expert advice from independent financial specialists, Carewise can help you to make informed decisions on choosing and paying for the right care.

The Carewise care fees specialists are regulated by the Financial Conduct Authority and members of the Society of Later Life Advisers, so you can have peace of mind when discussing your finances.

Carewise could also help to protect your finances for the future. Contact Carewise to find out how you could benefit.



[carewiseadvice.com](http://carewiseadvice.com) [carewise@westsussex.gov.uk](mailto:carewise@westsussex.gov.uk) 0330 222 7000

## VISIT THE BIGGEST SHUTTER SHOWROOM IN WEST SUSSEX!

With lots of different materials, styles and options to consider, choosing shutters for your home can be a bit of a minefield!

That's why a visit to our showroom is a great first step to exploring shutters.

*(Pop in for a chat, cup of tea & our favourite biscuits!)*

Experience how much light they let in, how much privacy you really get and our unique fitting system that doesn't use screws.

*(so no holes in your windows or walls!)*

**PLUS! Initiative readers get 15% off until 12th August\***

\*T&Cs apply. Wooden shutters only. £2100 minimum order before discount.



"Absolutely brilliant service from start to finish. Every member of the team was pleasant and efficient and the finished product looks fantastic."  
- Rod & Danielle Smith, Runcton



"Chichester Shutters are probably the most lovely company ever. They do a wonderful quality job. Everything is excellent down to the tiniest detail."  
- Helen Grounds, Barnham



Check out hundreds more 5-star reviews on Google!



Book online at [chichestershutters.co.uk](http://chichestershutters.co.uk) or call 01243 252096

**Chichester Shutters Showroom**

Kingley Centre, Downs Road, West Stoke PO18 9HJ

Monday to Friday & Saturday (by appointment only)

Please book appointment or call 01243 252096 before visiting



# Keeping the district safe

Maintaining the safety and security of our residents is always a top priority for the council and our partners. Although we take pride in the district being a safe place, we recognise that all areas occasionally experience crime and disorder issues. This is why the council is a member of the district's Community Safety Partnership, which ensures that we can collaboratively respond to community safety issues quickly and appropriately.



The partnership includes West Sussex County Council, Sussex Police, West Sussex Fire and Rescue Service, Sussex Police & Crime Commissioner, Western Sussex Primary Care Trust, West Sussex Drug & Alcohol Action Team, and Sussex and Surrey Probation Service. Together, we closely monitor crime rates, anti-social behaviour issues and community tensions to help make the district a safer place to live, work and visit.

In the last year, we've delivered various community-focused initiatives, including a mobile support unit to help women

feel safer at night, and this is currently operating in Chichester city centre two nights a week. We've also delivered scam awareness training, activities for young people, and training to the University of Chichester's Student Union staff to help them spot harassment and stalking and know what to do if they witness this behaviour. You may even have seen us at local events, which we attend so that we can meet directly with residents and discuss community safety concerns.

We're currently focusing on tackling hate crime as well as fraud and forgery issues

and are busy planning the partnership's priorities for the coming year. For more information or to raise an issue or concern, please email us at [communitysafety@chichester.gov.uk](mailto:communitysafety@chichester.gov.uk) or visit [www.chichester.gov.uk/communitysafety](http://www.chichester.gov.uk/communitysafety)



## Safe and easy ways to pay

Making sure you have safe, efficient, and easy ways to pay your bills is a top priority for us. This is why from **1 November**, we will no longer be taking cheques. They take more time to process and can get lost in the mail, which means your service may be delayed or not delivered at all. There is also an increased risk of fraud with cheques and so we feel that now is the right time to move away from cheque payments.

This also has the added benefit of keeping council tax low — it costs more than £3.50 to process every cheque, compared with just a few pence for an online payment. There are lots of other ways to pay your bills, which are safer and easier. Simply visit [www.chichester.gov.uk/applyreportpay](http://www.chichester.gov.uk/applyreportpay) or you can call our automated payments line on 01243 534880.



### Walberton Place Care Home

Walberton Place Care Home provides the highest standards of family-led residential and dementia care. Our home is luxurious and beautifully furnished, whilst retaining a warm family atmosphere that makes Walberton Place feel extra special.

- Warm inclusive family atmosphere
- Person-centred dementia care
- Daily fine dining
- Spacious en-suite bedrooms
- Café, pub, cinema & hair salon
- Landscaped gardens

To find out more about life at Walberton Place contact our Customer Relations Manager Cheryl Tyson on 07725 799 213 or email [cheryl.tyson@countrycourtcare.com](mailto:cheryl.tyson@countrycourtcare.com)

01243 551 549

Yapton Lane, Walberton, Arundel, West Sussex, BN18 0AS

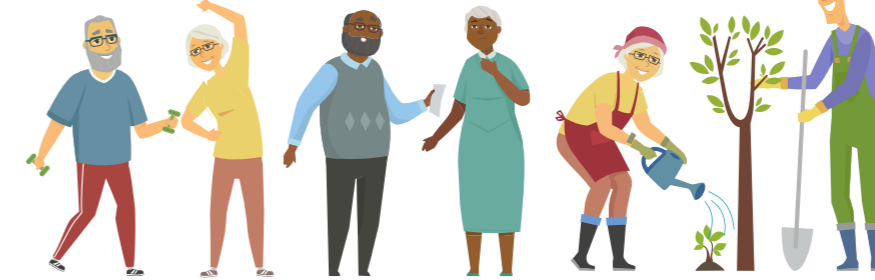
[www.countrycourtcare.com](http://www.countrycourtcare.com)



## Looking for extra support with your day to day living?



The Connect to Support website is for anyone in West Sussex who is looking for additional help or support to maintain their independence.



Visit our website to:

- **DISCOVER** tips on improving your health and wellbeing
- **VIEW** equipment to help you stay independent
- **FIND** support for carers
- **LEARN** about options for extra care and support.

[westsussexconnecttosupport.org](http://westsussexconnecttosupport.org)

Do you need help to use the website? • Email: [socialcare@westsussex.gov.uk](mailto:socialcare@westsussex.gov.uk) • Phone: 01243 642121

## LIVE BETTER LONGER

### Are you worried about falling? Feeling unsteady on your feet?

We can help! Our low-cost Wellbalanced exercise referral programme is a 24-week course of balance and strength classes specifically designed to reduce the risk of falls. Each session is led by a qualified Postural Stability Instructor and a Support Instructor.

#### Health and wellness benefits

- Increase muscle strength
- Improve your balance
- Reduce the risk of falling
- Increase flexibility
- Boost your mental wellbeing
- and make new friends!

Call us on **01444 657099**

email [info@wellbalancedprogramme.co.uk](mailto:info@wellbalancedprogramme.co.uk)

or visit us online [ahswellbeing.co.uk/wellbalanced-for-wellbeing](http://ahswellbeing.co.uk/wellbalanced-for-wellbeing)



AHS Wellbeing is a not-for-profit community interest company enabling communities to enjoy a greater quality of life through inclusive, accessible and sustainable support.





# Taking steps to make a big difference to our environment

As a council, we are committed to working with you to tackle the effects of climate change in our area. In 2021, we adopted a Climate Emergency Action Plan, in which we set a target of a 10% reduction in greenhouse gas emissions year on year until 2025 for both the council and for the Chichester District as a whole.

We wanted to update you on some of the many actions we have taken across the district to date!

- We've produced a communications campaign to encourage people to make energy efficiency improvements in their homes.
- We're encouraging you to have your say on climate change matters through our Let's Talk Panel.

- We've organised an event to help you better understand the energy efficiency measures that you can apply to your home.
- Carbon emissions from Westgate Leisure Centre will reduce by almost a quarter after we successfully bid for a £1.3 million government decarbonisation grant, and we are now reviewing the options for our other buildings.
- Two of our four parking services vehicles are fully electric, and we've been improving our online parking services, which we have even received a national award for!
- We're helping to reduce fuel poverty and excess cold by offering financial assistance toward efficient heating and

insulation to homeowners and landlords if a property is occupied by someone on a low income and the property has a low energy performance certificate rating.

- We're working with our partners in Selsey to raise awareness of walks in the area using QR codes.
- We've funded computer training for the residents of Petworth to give them confidence in carrying out transactions and communicating online from the comfort of their own home.
- We're working with our partners to create a better pedestrian-friendly and greener environment across Midhurst, through traffic measures, increased planting, and a new wayfinding system.
- We've provided a £12,000 grant to help improve cycling facilities in Midhurst.
- We're developing a green travel plan for our staff and we are in the process of purchasing two electric vehicles and bikes for our staff to use for council business. This is a pilot scheme and if successful, the fleet of pool cars will be expanded.
- We're planting even more trees in our parks and green spaces.
- We're introducing two electric refuse vehicles to collect your waste and recycling.
- We've opened brand new short stay accommodation with lots of eco-friendly measures, from solar panels to electric vehicle charging points.



Cllr Penny Plant, Cabinet Member for Chichester Contract Services and the Environment



Cllr Alan Sutton, Cabinet Member for Housing, Communications, Licensing and Events

## Working with our natural environment

We've recently had the pleasure of working with local resident and farmer, Tom Monnington, who is passionate about ensuring that farming and the natural environment work together harmoniously. Tom and a group of local farmers have been looking at ways in which they can work with nature while farming the land on the Manhood Peninsula, and tree planting has been a key part of this.

Farmers in the area have been planting trees and hedges on their land for many years, but since they formed the group — known as The Manhood Farmer's Cluster Group — they have been working with local individuals and organisations to fill in gaps in hedgerows and link up important wildlife habitats. This is all part of a

special initiative called the Linking Agricultural Production With Integrated Natural re-Generation project.

At the end of last year, we supplied Tom with 200 trees to support this project as part of our Tree Chichester District scheme, which aims to increase tree cover across the district. This scheme is an important part of our Climate Emergency Action Plan, which you can read more about on these pages and on our website at [www.chichester.gov.uk/climatechange](http://www.chichester.gov.uk/climatechange)

There are also plans to appoint independent wildlife experts to gather statistics of key animal and plant species on their farms. This work will help assess the health of farmed land by identifying key areas of improvement

and practical ways to boost habitat and key species population.

Tom says: "This is very much a long-term project. As a group, we farm most of the land on the peninsula and so we feel that we can make a real difference. Ultimately, our aim is to conserve and enhance the biodiversity on the Manhood Peninsula's farmland for the benefit of wildlife, the local community, and for future generations to come. We look forward to sharing our findings and improvements with the local community as the project progresses."



Tom Monnington, Manhood Farmer's Cluster Group

- Our £6 million redeveloped industrial estate has been designed to limit its carbon emissions and has solar panels fitted on the roofs.
- We're working with our partners to help small and medium sized enterprises to prepare for the low carbon economy.
- We will require new development to achieve high levels of energy efficiency and minimise greenhouse gas emissions through our planning policies within the Local Plan.
- Our Local Cycling and Walking Infrastructure Plan will enable us to bid for funds to improve walking and cycling routes in Chichester and the surrounding area.
- We've provided over 8,000 free trees to the local community, residents, schools, businesses and community groups to plant across the district.
- We've planted three mini urban forests across the district, including in Chichester, Midhurst and Selsey.
- We've awarded grants to seven landowners to spend on tree planting initiatives on farms and private land.
- We have introduced a new kerbside collection trial to help people recycle their old textiles, small electrical items and used coffee pods.
- We're launching a ground breaking project that aims to safeguard and enhance strategic wildlife corridors.
- We've secured further funding to help residents install energy efficiency and renewable energy measures in their homes. We'll be working with delivery partner, Agility Eco, who will be contacting eligible homeowners over the coming months to let them know how they can apply for a grant.

To find out more about how you can help play your part in making a big difference to our environment, please visit [www.chichester.gov.uk/climatechange](http://www.chichester.gov.uk/climatechange)

**CHICHESTER FESTIVAL THEATRE**

TICKETS FROM **£10**

Charlie Stemp

# CRAZY FOR YOU

THE GERSHWIN MUSICAL COMEDY

Music & Lyrics by **George Gershwin and Ira Gershwin**  
Book by **Ken Ludwig**

Co-conception by Ken Ludwig and Mike Ockrent  
Inspired by material by Guy Bolton and John McGowan

11 July – 4 September  
[cft.org.uk](http://cft.org.uk) 01243 781312

#CrazyForYou

Crazy for You™ is presented by arrangement with Concord Theatricals Ltd on behalf of Tams-Wittmark LLC. concordtheatricals.co.uk

ARTS COUNCIL ENGLAND

# Keeping people safe on our shores this summer

**Our Foreshores team has been hard at work patrolling the district's nine miles of coastline to keep the beaches at Bracklesham, Selsey and East Wittering safe and tidy.**

The team operates from Bracklesham at full strength from early April to late September each year. We lease the beaches at Selsey, Bracklesham and East Wittering from the crown estate, which means that we have a duty to patrol and maintain this area of coastline.

Over the past five years, the team has dealt with a wide range of things, from beached whales and land disputes, to exposed military tanks, sweeping away shingle and tidying rubbish.

When an emergency situation arises, the team liaises with organisations such as the RNLI and the Coastguard to save lives and keep people safe. They are often

the first to notice breaches in coastal defences, hazards in the water and on the beach, and much more.

"We keep a close eye on the district's sea defences," says Martin Gillam, who manages our Foreshores Team. "Last year, one of the shingle banks had significantly eroded. We made the Environment Agency aware and they swiftly came and fixed it. Had it breached, it would have flooded the land behind and could have caused a significant amount of damage to people's homes."

Our Foreshores team run Royal Yachting Association (RYA) powerboat courses. You can find out more about the courses on offer at [www.chichester.gov.uk/rya](http://www.chichester.gov.uk/rya)

To keep residents and visitors safe, there is a Foreshores Code of Conduct, which can be found at [www.chichester.gov.uk/media/19008/Foreshore-Code-of-Conduct/pdf/Code\\_of\\_Conduct\\_Leaflet6.pdf](http://www.chichester.gov.uk/media/19008/Foreshore-Code-of-Conduct/pdf/Code_of_Conduct_Leaflet6.pdf). By following the rules set out in this leaflet, beachgoers can enjoy their time in the sun without putting themselves and others at risk.



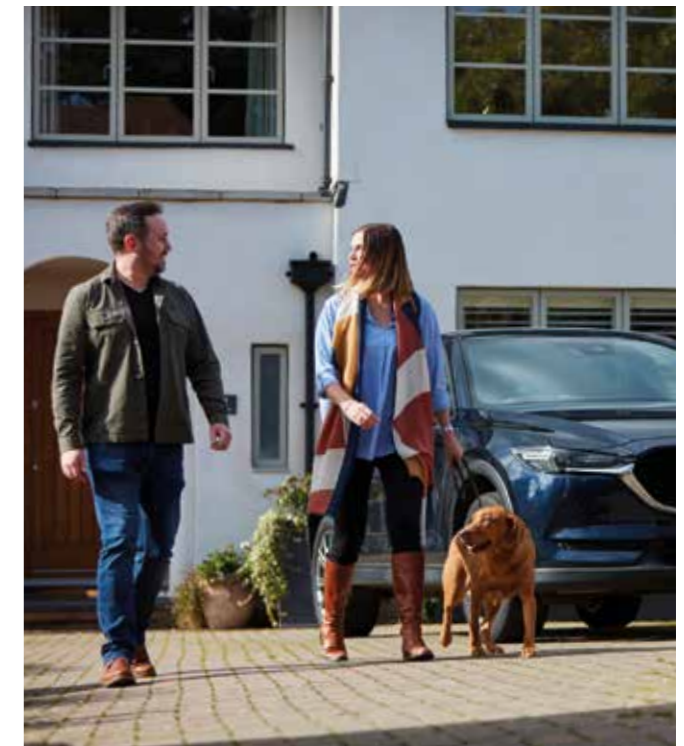
Martin Gillam from our Foreshores Team



## 9 OUT OF 10 CUSTOMERS RENEW WITH US EACH YEAR

To find out why, talk to us today about your home and car insurance needs.

Contact NFU Mutual Chichester and Horsham  
01243 784022 | 1 North Pallant, Chichester, PO19 1TJ



Chatan A Modi is an appointed representative of The National Farmers Union Mutual Insurance Society Limited (No. 111982). Registered in England. Registered Office: Tiddington Road, Stratford-upon-Avon, Warwickshire CV37 7BJ. Authorised by the Prudential Regulation Authority and regulated by the Financial Conduct Authority and the Prudential Regulation Authority. A Member of the Association of British Insurers. For security and training purposes calls may be recorded and monitored.



Award winning care homes



Our highly trained care home teams are specialists in residential, nursing, dementia and respite care. With some of the highest care ratings in the UK, we're here to help you and your family at every step of your journey.

If you're considering care, call **Caroline** on **01243 884910** or email [caroline.thomas@careuk.com](mailto:caroline.thomas@careuk.com)

Trusted to care.  

Chichester Grange care home  
Donnington, Chichester  
[careuk.com/chichester-grange](http://careuk.com/chichester-grange)



— Est. 1867

## Funerals don't have to follow a set formula

Whether you'd like something traditional or completely different, big or small, and whatever your faith, wishes or needs, we'll help you arrange a funeral as individual as the life it's celebrating.

Please get in touch with your local Reynolds office to find out more about how we can help you arrange or pre-arrange a truly personal funeral.

<b>Bognor Regis</b> 01243 864 745	<b>Chichester</b> 01243 77 33 11	<b>Littlehampton</b> 01903 730 666
--------------------------------------	-------------------------------------	---------------------------------------

[reynoldsfunerals.co.uk](http://reynoldsfunerals.co.uk) [info@reynoldsfunerals.co.uk](mailto:info@reynoldsfunerals.co.uk)



Save £100 on a pre-arranged funeral plan by quoting PLANAHED22

Offer ends 30.09.22



## Stop Smoking Service

Did you know that you are four times more likely to be successful in quitting smoking if you have professional support? Our Chichester Wellbeing team are qualified Smoking Cessation Advisors and are able to offer 12 weeks of free one-to-one support, including Nicotine Replacement Therapy, to help you quit. To find out more, call us on 01243 521041 or email [wellbeing@chichester.gov.uk](mailto:wellbeing@chichester.gov.uk)

## Working together to make a healthier, happier workplace

**Our Workplace Health Advisor works with small local organisations and businesses to help encourage employers and employees to make healthier lifestyle choices.**

It has never been more important to look after the wellbeing of staff. Our free service offers advice and guidance in the form of talks, workshops and one-to-one support provided face-to-face in the workplace or by telephone and virtual appointments.

We can offer:

- an 'Introduction to Chichester Wellbeing' talk
- staff wellbeing check-ins
- alcohol wellbeing support
- smoking cessation appointments, and
- NHS health checks

For help to make lasting and effective changes in your workplace, call 01243 521041 or email [workplacehealth@chichester.gov.uk](mailto:workplacehealth@chichester.gov.uk)

## New Weigh Better Life courses

Our free Weigh Better Life weight management support can help you to improve your health and wellbeing, and we're pleased to say that we have new courses starting this September.

The 12-week programme supports you in making healthy lifestyle changes that are sustainable. The course, which offers nutrition and health advice with weekly group sessions, is suitable for individuals with a BMI between 25 and 40 who are looking to make long-term changes. If you are outside of this bracket, our friendly wellbeing advisers can support you on a one-to-one basis — just call 01243 521041 for more information or visit [www.chichesterwellbeing.org.uk](http://www.chichesterwellbeing.org.uk)



### DUNDEE HOUSE

Midhurst, West Sussex  
2 bedroom apartments  
selling from £495,000  
Exclusively for over 60s

## Downsizing done differently

**BE QUICK!  
ONLY 4 LEFT**

A fresh new approach that offers a more fully realised lifestyle. A brand new development of 16 apartments, ideally suited to downsizers looking for camaraderie, security and peace of mind. Perfectly placed in Midhurst town centre, at the heart of the South Downs.

**Book a private viewing today**  
01730 770 660  
[sales@lilyford.co.uk](mailto:sales@lilyford.co.uk)

Explore all the features and available apartments at [www.lilyford.co.uk](http://www.lilyford.co.uk)



## A SUMMER OF Celebrations

Visit Chichester city centre this summer to enjoy street parties, Jubilee picnics, vibrant flag and flower displays, free family trails, wonderful shopping and eating experiences plus much more.

Chichester Business Improvement District **BID**

Visit [chichesterbid.co.uk](http://chichesterbid.co.uk) to find out more.

## HAVE YOU TRIED OUR TONING & WELLNESS SUITE?

Intuitive, safe and effective

Scan QR code or hand in at site for more information

**EVERYONE CAN FEEL GOOD**

[everyoneactive.com/centre/westgate-leisure-centre/toning-suite](http://everyoneactive.com/centre/westgate-leisure-centre/toning-suite)  
Westgate Leisure Centre 01243 785 651

everyone ACTIVE  
Everyone Active manages these facilities in partnership with Chichester District Council

## Abbeyfield Chichester

affordable, assisted, retirement living in this glorious Cathedral City

We currently have vacancies, please ring Helen to arrange a viewing.

01243 539207  
[www.abbeyfieldchi.org](http://www.abbeyfieldchi.org)

## At Home Abbeyfield Chichester

Helping you to stay in the home you love in later life.

A Companionship and Help at Home service from the people who have been supporting Chichester's elderly community for over 50 years.

Contact Mandy Turner  
01243 773221  
[www.abbeyfieldchichester.org](http://www.abbeyfieldchichester.org)



# WAYNE-WINDOWS

## .COM

Since 1975

Charlwood Street, Bognor Regis PO21 2PQ  
01243 866753

