

initiatives

issue 91 • winter 2022



Help with finances



Help with saving money on household bills



Supporting
YOU

Help with housing



Help for businesses



Help with health and wellbeing



Find your festive waste and recycling collection dates inside

Mobility Scooters From £729*

Wheeled Walkers From £69.99*

Power chairs From £1,249*

Wheel chairs From £189*

Clearwell mobility
Making Life Easier

Chichester Showroom
1 Market Avenue
Southgate, Chichester PO19 1JU
01243 839 699
(Opposite Law Courts)
Mon-Sat 9^{am}-5^{pm}

www.clearwellmobility.co.uk
*Prices quoted exclude VAT and are available to customers with a long term medical condition.

FREE 2022 Brochure NEW!
Name _____
Address _____
Postcode _____
Post to: FREEPOST CLEARWELL MOBILITY

Welcome to the winter issue of initiatives



We know that many people are finding things tough at the moment due to rising energy and goods prices, and cost of living pressures. We want to make sure that you are aware of all of the help that is available to you, and so we have launched a campaign called Supporting You. You'll find lots of information on pages 8 to 11, which highlights some of the key schemes that you can access through the council and our partners. Please remember that we're always here to help and would encourage anyone who is struggling to get in touch with us.

With Christmas on the way, it's wonderful to see so much going on locally. Our district has so much to offer this festive period, from unique

high street shopping experiences to cultural events and celebrations. As ever, it's so important to support our local businesses and shops, especially in light of the past few years. To help you make this Christmas a local one, we've included a special feature on pages 18 and 19. I'm excited to say that we will be welcoming a new Christmas market in Chichester this December, which will make the build-up to the big day even more exciting – more news on this on page 16.

Also included in this issue are our festive waste and recycling collection dates and recycling tips for the Christmas period. Our What's On section on pages 12 and 13 shines a light on some of the many events and activities going on, and you can find even more on our website at www.chichester.gov.uk/whatson. Make sure you take a look at the great Christmas events planned at our Novium Museum – see page 18.

These are just a few highlights from this issue but you don't have to wait for your next magazine to find out the latest news. Our email newsletter, initiatives+ is a great way to keep up to date on local news, schemes and events – you can sign up quickly and easily at www.chichester.gov.uk/newsalerts

Finally, I hope you have a wonderful Christmas and I wish you all a prosperous new year.

Best Wishes
Cllr Elizabeth Hamilton
Chairman

Contents

Features	
What's On	12-13
Are you winter ready?	14
Becoming a councillor	22
News	
Working to protect our coastline and marine habitat	6
New Bourne Bus service	14
Chichester markets	16
Festive waste and recycling	20
Cover stories	
Supporting You	8-11
Let's make this Christmas a local one	18-19
Chichester Local Plan update	4-5

We'd like to thank our advertisers for covering the design, print and distribution costs of this magazine

Follow us



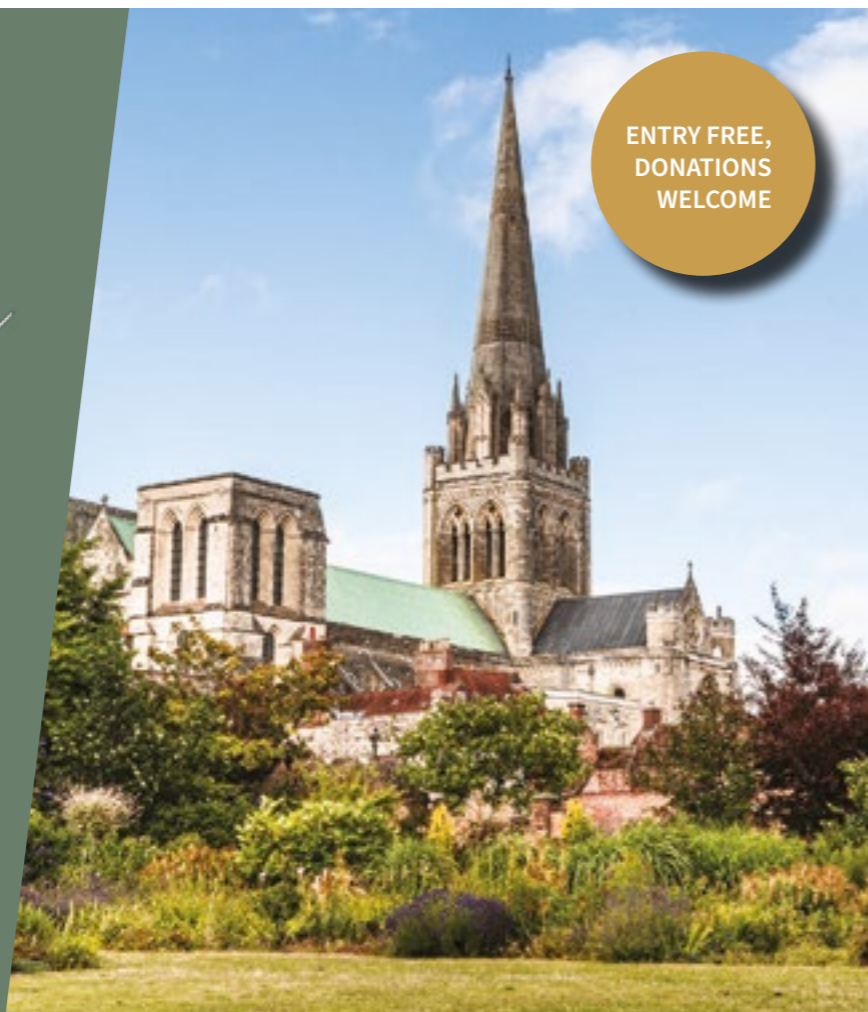
DISCOVER CHICHESTER CATHEDRAL

Step into a living place of worship with over 940 years of history, where medieval stone carvings sit alongside world famous contemporary artworks.

Located right on your doorstep – there is something for everyone, with daily services, regular lunchtime concerts, exhibitions, as well as activities for children and families!

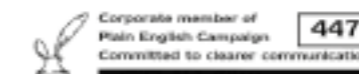
Plan your visit today:
CHICHESTERCATHEDRAL.ORG.UK
f t i

ENTRY FREE,
DONATIONS
WELCOME



Chief Executive: Diane Shepherd
Editorial Team: Sarah Parker, Clare Hawkin and Terri Foster.
For further information/enquiries, please ring 01243 534537/534679.
Designed by: StudioMoo, Chichester
Printed by: Walstead, Peterborough
Published by: The Communications Team, Chichester District Council

Because *initiatives* enables other groups and individuals to publicise their work and consult with members of the public, the views expressed may not be those of the District Council.



Front cover: Supporting You – support and help with the current cost of living pressures.

To advertise with us, please email advertising@chichester.gov.uk or call 01243 521059.

Inclusion of advertisements does not constitute a recommendation by Chichester District Council of the products or services offered or the organisations involved, nor will the council incur any liability whatsoever for any claim relating to them.

District Council offices

East Pallant House
1 East Pallant
Chichester
West Sussex
PO19 1TY
Tel: 01243 785166 Fax: 01243 776766
Internet: www.chichester.gov.uk
Email: helpline@chichester.gov.uk
Emergencies out of hours: 01243 785339

This publication is available in large print. Please telephone 01243 534679 for further details.



Chichester Local Plan update

We are currently in the process of pulling together the final pieces of the Chichester Local Plan and we expect to ask for your views on this in 2023.

As you know, the Chichester Local Plan has been one of the most challenging pieces of work we have ever embarked on, mainly due to issues we have faced with the roads, wastewater, and water neutrality.

Before any council submits their Local Plan to the Planning Inspector, they must show that they have tried and tested every possible way to reach the housing numbers set by government. No stone can be left unturned. This means that the work that we have carried out to date has been vital in demonstrating the complex situation we are in.

As we have previously explained, many elements of the Local Plan are out of our control – including roads, wastewater and water neutrality. This is what makes this process so challenging. The Local Plan is a bit like a jigsaw - you have to make sure all of the pieces fit. The Planning Inspector will want to see that we have investigated every single option and that we have the evidence to back this up. We need to go through this process and gather this evidence in order to get the very best outcome

for our residents and businesses and keep planning decisions locally. Below we have provided an update on each of the key issues that we are dealing with within the Local Plan.

Roads

Due to the significant road improvements required to enable new housing growth to take place, and the fact that insufficient funding is available to deliver this, we will be explaining that the plan will not meet the full housing targets set by government. Instead, we have worked closely with National Highways and West Sussex County Council to establish a revised Development Strategy based on improvements that can be delivered to the A27 during the plan period. Our government target is 638 homes each year from 2021 to 2039. We have been working with our partners to agree a reduced housing target, as well as plan for improvements to the local road network, including specific junctions on the A27, and the introduction of sustainable travel options.

Wastewater

Water companies have a statutory duty to treat wastewater from new development. We work closely with these companies,

primarily Southern Water but also Portsmouth and Thames Water, to ensure new development is factored into their future plans. Water companies are currently preparing Drainage and Wastewater Management Plans, which look at the improvements needed over the next 25 years or more. Water companies are also due to bring forward improvements that are needed before 2025.

Wastewater disposal has long been a problem in the south of the district and we have been lobbying Southern Water to explain to us what improvements are required for some time.

Following an official complaint to the Water Services Regulation Authority, Ofwat, we have been holding constructive meetings with Southern Water and the Environment Agency, and Southern Water has agreed to work with us jointly on identifying improvements that need to be made.

We are continuing to work closely with Southern Water in particular, to confirm they can deliver the required improvements and to identify where phased delivery of housing might be needed. A first Statement of Common Ground (a statement setting out the current position) was agreed by the council, Southern Water and the Environment Agency and was published in November 2020.

Water neutrality

Natural England has advised us that planning applications for new development on sites that are supplied with water by Southern Water, from its Sussex North Water Resource Zone, should demonstrate that the water consumed is 'water neutral'.

Any planning application in the areas affected will need to demonstrate water neutrality through a mixture of water efficiency, and offsetting. This applies to any proposed development that would increase demand on the water supply, including offices, shops, and houses. We have issued advice on our website setting out requirements for proposals to achieve water neutrality.

A relatively small part of the Chichester Local Plan Area is currently affected by the requirement for water neutrality. Neighbouring planning authorities, including the South Downs National Park Authority, Horsham District Council and Crawley Borough Council are also affected. The council has worked on a joint study with these authorities to quantify the scale of the issue and identify proposed mitigation schemes to address this. The results from the study are being finalised and while the detailed mitigation scheme is being worked up, we are now confident that we will be able to identify an acceptable way forward.

Keep in touch

For the latest updates:

- visit www.chichester.gov.uk/localplanreview
- sign up to our local plan email newsletter: www.chichester.gov.uk/localplannewsletter
- keep an eye on our social media sites and the local media



Expert advice on paying for care

Long-term care in your own home or in a residential care home is expensive, but with expert advice from independent financial specialists, Carewise can help you to make informed decisions on choosing and paying for the right care.

The Carewise care fees specialists are regulated by the Financial Conduct Authority and members of the Society of Later Life Advisers, so you can have peace of mind when discussing your finances.



carewiseadvice.com 0330 222 7000
carewise@westsussex.gov.uk

The best things in life are free!

westsussex.gov.uk/FreeBusPass
0330 222 6222

Bus it! You know it makes sense.



Free off-peak travel for residents of state pension age anywhere in England.

WS33165(H) 09.22

Working with our partners to protect our coastline and marine habitat



Managing our coastline and protecting our marine environment for future generations has never been more important for us as a council.

Our coastline faces many challenges over the coming years, including ageing defences, more extreme weather events due to climate change, and rising sea levels.

There has also been a notable decline in the number of crabs and lobsters being caught off our coasts, threatening our local fishing industry, which has been an important part of our economy for generations.

That's why, this year, we've joined forces with our partners to help address these issues and have embarked on two major new projects.

In June, we began a collaboration with Coastal Partners to protect our nine miles of coastline by sharing coastal and environmental management expertise and resources.

Coastal Partners are a team of engineers, surveyors, project managers, and environment and finance experts who deliver a comprehensive coastal management service to help manage the coastal flood and erosion risk across 162km of coastline.

"We're delighted to be joining Coastal Partners and are looking forward to sharing knowledge and expertise with founding members, Fareham, Gosport, Portsmouth, and Havant councils," says Cllr Penny Plant, Cabinet Member for the Environment and Chichester Contract Services. "This collaboration will reduce flood and erosion risk to our shared community, while enhancing the environment for future generations to enjoy."

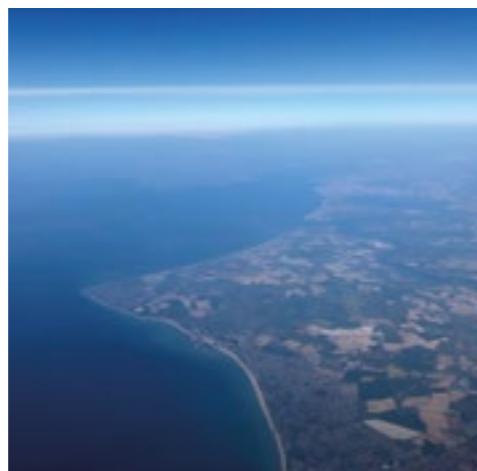
"One important project for the next few years will involve the coastal defences in Selsey, which are coming to an end of their serviceable life. The partnership will be looking at the coastal management options to help achieve the best outcomes for our communities and the environment."

You can find out more about the work of the Coastal Partnership by visiting: www.coastalpartners.org.uk

A second project, led by Chichester District Council, is investigating the reasons why there has been a reduction in the number of crabs and lobsters caught off the Manhood Peninsula coastline.

The CHASM (Crustaceans, Habitat And Sediment Movement) project, which has been developed in direct response to concerns from the local fishing community, will also investigate the reasons why there has been an increase in sediment.

Other partners involved in the project include the Channel Coastal Observatory, the University of Southampton, and the University of Brighton, in addition to over 20 national, regional, and local environmental organisations with interests in marine conservation.



The high-profile initiative has even caught the attention of Sir David Attenborough, who sent a handwritten note of support to the partnership. He said that he hoped the work would enable protective measures to be based not on theory, but on facts.

"Fishing has been an important part of the economy in Selsey for generations for over 1000 years," explains Penny. "Over the past 10 years, the local fishing community has noticed huge changes in the marine environment, and this project aims to understand the changes that have taken place and the reasons for this. It will also look to investigate solutions to ensure the sustainability of both the fishing industry and the marine environment."

"We are especially grateful for the support of our partners, from the Universities of Southampton and Brighton, who are carrying out the research for the project."

A review of the work undertaken so far is published in The CHASM report 2020–2021 and has paved the way for future research. This can be found at: <https://peninsulapartnership.org.uk/projects/chasm/chasm-report-2020-2021/>

Dr Heidi Burgess of the University of Brighton, Jane Cunningham of Chichester District Council, and Dr Charlie Thompson of the Channel Coastal Observatory and the University of Southampton. Photo by Martin Davies



ASHLING PARK
ESTATE

Think Napa Valley with a twist of the English Countryside

Beautiful vineyard with unique experiences to dine, tour, taste, stay the night or even make your own gin in the gin school.

ashlingpark.co.uk • 01243 967700 • contact@ashlingpark.co.uk



Many people are finding things tough at the moment due to rising goods and energy prices, inflation, and cost of living pressures. We know that people are worried and so we want to make sure that you are aware of the help that is available to you.

We are delivering our Supporting You campaign in partnership with the Observer Series and our local partners. Whether you are struggling to pay bills, feel isolated, or are concerned about rising energy costs, here is a summary of some of the help that you may be able to access.

Help with finances

What is Universal Credit and housing benefit?

If you are a resident on a low income, are out of work or cannot work, then you can claim Universal Credit. This monthly payment is intended to help cover living costs, such as rent and bills. This is administered by the Department for Work and Pensions and you can find out more at: www.gov.uk/universal-credit or by calling: **0800 328 5644**.

If you are of state pension age, and/or live in supported sheltered or temporary accommodation, then you won't be eligible for Universal Credit but can instead apply for housing benefit at www.chichester.gov.uk/applyforbenefit

I still can't meet my rent payments. Is there any extra help I can access?

If you already receive the housing payment through Universal Credit or housing benefit, and are still unable to meet the cost of your rent, you might be eligible for a top up payment. You can find out more about this under 'discretionary housing payments' at: www.chichester.gov.uk/benefitforms

Is there help available towards council tax payments?

We're urging those who claim Universal Credit to check if they are also eligible for help with their council tax, by applying for our Council Tax Reduction scheme. You won't automatically receive this, so if you think you may be eligible, visit: www.chichester.gov.uk/myaccount

Whatever your situation, please contact us if you're struggling to pay your council tax bill by emailing: taxation@chichester.gov.uk as there are different ways in which we may be able to help you. You can find out more at: www.chichester.gov.uk/counciltaxdiscount

What is Pension Credit?

Pension Credit is a tax-free payment for people of state pension age. If you or someone you know are of state pension age, we'd encourage you to use the Government's online calculator at: www.gov.uk/pension-credit-calculator to find out how much you could be eligible for.

Can I access help to manage my debt?

If you're worried about debts or missed payments, we'd recommend you contact Money Helper, which is a free and independent debt advice service at: www.moneyhelper.org.uk/en. If you are worried about paying a council debt, please get in touch with us.

What is the cost of living payment?

Households on means tested benefits will receive a payment of £650 from the Government this year. This will be paid automatically.

Individuals on disability benefits will have received a one-off £150 payment in September to help with extra costs, such as for specialist equipment or transport. This is in addition to the £650 Cost of Living Payment for disabled people who also receive means tested benefits. You can find out more at: www.gov.uk/guidance/cost-of-living-payment

Are there any other organisations that can help me?

There are a range of organisations and support schemes that can help you, and we have listed these at: www.chichester.gov.uk/helpwithfinances

What am I eligible for?

An easy way to find out what benefits, tax credits and Universal Credit you are entitled to is by using the Government's benefits calculator at: www.entitledto.co.uk/benefits-calculator

Help with saving money on household bills

Can I access help with my energy bills?

Earlier this year, we issued Government funding to help people with their energy bills. The Government has also announced further plans to help households. Measures include introducing an energy price guarantee. You can find out more about this at: www.gov.uk/government/publications/energy-bills-support.

All households will also be given a one-off £400 discount on their fuel bills this winter, which will be applied automatically to your energy bill.

In addition, £650 will be paid to more than eight million low-income households who receive many benefits or tax credits. In the winter months, pensioners could get between £100 and £300 in Winter Fuel Allowance to help pay heating bills. In addition, this year, all pensioners will receive an extra one-off £300 Pensioner Cost of Living Payment, and payments of £150 to disabled people will also be made. These payments will be made automatically by the Department for Work and Pensions.

If you are on a low income, then the Government's Warm Home Discount could save you £140 off your electric bill during the winter months. Check with your electricity provider to see if you are eligible.

In very cold weather, people may be eligible for extra support. If you're in receipt of certain benefits and the weather drops to zero or below for more than seven days, you may be able to apply for a 'cold weather' payment from the Government: www.gov.uk/cold-weather-payment

Arun and Chichester Citizens' Advice are also on hand to offer advice and support if you're struggling with your energy bills: <https://arunchichestercab.org.uk/contact-us/energy-2022/> or call: **01243 974063**.

How can I save money by making my home more energy efficient?

If your heating bills are very high, it may be that your home isn't very energy efficient, and that by making improvements, you'll be able to reduce your energy bills.

There are a range of grants available to help both householders and tenants to make their homes more energy efficient and comfortable. Landlords would also benefit from improving their property if their tenant fits the eligibility criteria. To see if you're eligible, contact Arun and Chichester Citizens' Advice on <https://arunchichestercab.org.uk/contact-us/energy-2022/> or call **01243 974063**.

What can I do to save energy at home?

There are lots of different things you can do to increase the energy efficiency of your home — these ideas will save you money and help tackle climate change. You can find lots of tips here: www.chichester.gov.uk/climatechange

What should I do if I'm struggling to pay for food, medicine and essentials?

We'd urge you to apply for support through the Community Hub at West Sussex County Council by calling **033 022 27980**.

The Chichester District Foodbank can help with some emergency food supplies: <https://chichesterdistrict.foodbank.org.uk/get-help/> and there are also regular Pop-Up Pantries in various locations across the district: www.ukharvest.org.uk/education/pop-up-pantry

Free school meals are available to parents who are in receipt of a qualifying benefit in West Sussex County Council maintained schools, free schools and academies: www.westsussex.gov.uk/education-children-and-families/schools-and-colleges/free-school-meals

The Healthy Start Scheme helps people who are more than 10 weeks pregnant or have a child under the age of 4 and in receipt of a qualifying benefit. Find out more at: www.healthystart.nhs.uk

How can I save money on my food bill?

There are a number of ways to help your food go further and save you money:

- **Freeze food like bread, milk and cheese**
You can freeze almost any food, which stops it spoiling.
- **Buy what you need**
Writing a shopping list and sticking to it, avoiding 'buy one get one free' offers, and buying single fruits and vegetables as opposed to large packets that you won't use, are all ways in which you can reduce the amount of food and money that may otherwise go to waste.
- **Check 'use by' and 'best before' dates**
While 'use by' dates indicate that food cannot be eaten after this date for food safety reasons, 'best before' dates are more about the quality of the food. If an item of food has gone past its 'best before' date but looks fine to eat, then it does not need to be thrown away.
- **Make sure your fridge is at the right temperature (5 degrees Celsius)**
Fridges set to the right temperature can make your refrigerated items last up to three days longer.

There are more tips at: www.lovefoodhatewaste.com, where you can also find recipes designed for using up leftovers.

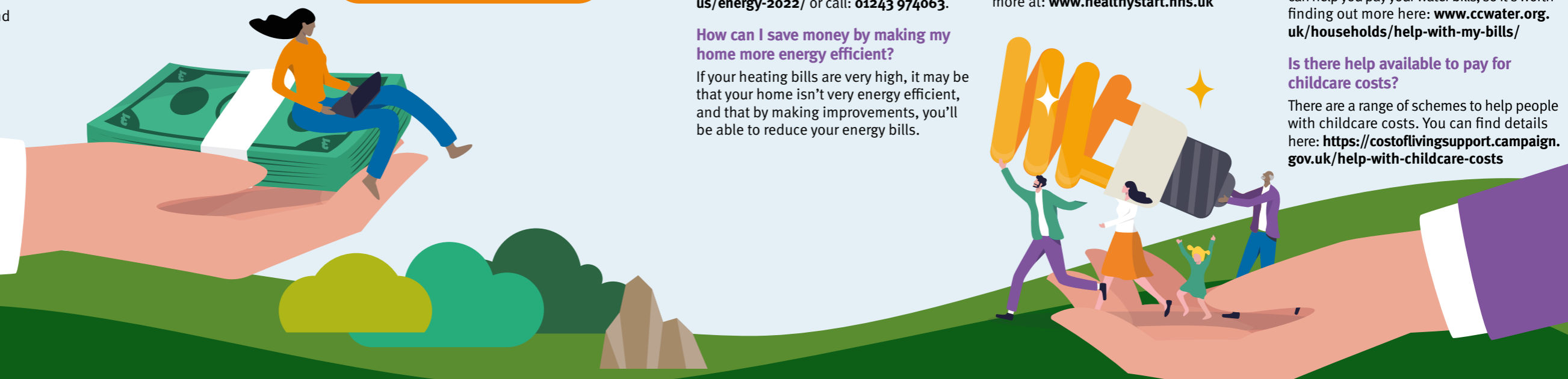
Is there help to pay utility bills?

You may be eligible for cheaper phone and broadband through the Government's social tariff, and you can find details here: www.ofcom.org.uk/phones-telecoms-and-internet/advice-for-consumers/costs-and-billing/social-tariffs

Many water companies run hardship schemes or fund independent charitable trusts which can help you pay your water bills, so it's worth finding out more here: www.ccwater.org.uk/households/help-with-my-bills/

Is there help available to pay for childcare costs?

There are a range of schemes to help people with childcare costs. You can find details here: <https://costoflivingsupport.campaign.gov.uk/help-with-childcare-costs>





Help with housing

What is affordable housing?

Affordable housing schemes aim to make cheaper homes available for people who can't afford to buy or rent at market rates. There are different types of affordable housing schemes, from renting to shared ownership to helping you to buy your first home.

What is affordable rented housing?

There are two types of affordable rented housing, both of which are provided by local housing associations. The first type is called 'social rent', which is usually around 50% cheaper than local market rents, and the second is 'affordable rent', and these must be at least 20% cheaper than local market rents. Recently built properties are usually let at 'affordable rents' rather than 'social rents'.

What is shared ownership?

Shared ownership schemes offer a helping hand to first-time buyers who can't afford a property outright.

Shared ownership properties are usually sold by a housing association. You generally buy between 25% and 75% of a home and pay rent on the remainder. Over time, you can buy more equity in your property – a process known as staircasing.

There are also other government schemes available that might suit you better and you can find out about these at: www.ownyourhome.gov.uk

How can you help me find an affordable home to rent?

The council doesn't own or manage social or affordable housing. Instead, it works with housing associations to provide accommodation for people who need it.

This is managed through a scheme called Homemove, which allows approved applicants to express interest in properties that are advertised on the Homemove website every fortnight. Those with the highest priority will get first refusal on a home.

How can I apply for affordable housing?

You first need to join the council's housing register, which you can do at www.chichester.gov.uk/findingahome Once your application has been accepted you will be able to browse and bid for housing on Homemove at: www.homemove.org.uk

What types of financial help can I get with housing costs?

There are a number of schemes to support you if you are struggling to pay for housing costs. See our 'help with finances' section.



What help is available for people whose existing home is in poor condition or needs adapting to meet their needs?

There are a number of schemes that can help with this, including Disabled Facilities Grants; Home Repairs Assistance; Energy efficient grant discounts; and the Chichester Warm Homes initiative. Each one has its own eligibility criteria and you can find out more here: www.chichester.gov.uk/housingfinancialassistance

The Government is offering grants to help residents to improve the energy efficiency of their properties. These schemes regularly change and so it's best to contact Arun and Chichester Citizens' Advice to find out what is currently available.

How do you support those facing homelessness?

We're committed to ensuring that everyone in our district has a safe and secure place to live. Anyone who is homeless or threatened with homelessness can apply to the council for assistance.

As part of a package of support for people facing homelessness, we can offer short stay temporary accommodation, while we work with individuals to find a longer-term solution.

Thanks to our partners including the Chichester Observer Series; Arun and Chichester Citizens' Advice Bureau; Voluntary Action Arun and Chichester; the Chichester Business Improvement District; Chichester Chamber of Commerce; local business associations; and West Sussex County Council.

Help with health and wellbeing

What is Chichester Wellbeing and how can it help me?

The Chichester Wellbeing service offers free, friendly, and confidential advice to help improve your mental and physical wellbeing. They can help with things like:

- healthy eating on a budget;
- reducing alcohol intake;
- losing weight;
- being more active; and,
- improving your emotional wellbeing.

In addition, if you're trying to stop smoking, the team's trained advisors can offer free Nicotine Replacement Therapy, saving you money. This is part of a 12-week free package of one-to-one support.

For further information please visit: www.chichesterwellbeing.org.uk

If you would like to book in for a free one-to-one appointment, a Wellbeing Check or NHS Health Check please call Chichester Wellbeing on 01243 521041 or email wellbeing@chichester.gov.uk

What is a social prescriber and how can they help me?

Our Social Prescribers are friendly and approachable and can help with non-medical issues that may be having an adverse impact on your health and wellbeing. You can be referred to a Social Prescriber by your GP, or through our self-referral form on our website: www.chichester.gov.uk/socialprescribing

Help for businesses

What support do you offer local businesses?

We're committed to helping our local businesses grow and thrive. Some of the support schemes offered by our Economic Development Team include:

- **Enabling Grants Scheme**
This grants programme is designed to help Small to Medium Sized Enterprises to invest in the growth of their business.
- **ShopAppy online high street**
This platform gives local shops and businesses the chance to establish an online presence and offer a range of services including 'click and collect' and other services. We have secured Government funding to enable local business to join ShopAppy for free until March 2023.

- **Free independent retailer training**
The West Sussex Retail Hub is delivered by industry experts and provides free training on how to drive more trade to your business, as well as offering practical advice. Although this is aimed at retailers, it is open to any business in the area.

You can find more information on all of these at: www.chichester.gov.uk/businesssupportandadvice

Are there any other organisations that can help?

We work closely with organisations that offer further training, advice and funding opportunities and you can find links to these on: www.chichester.gov.uk/businesssupportandadvice.

Is there help for businesses to pay energy bills?

The Government has set out details of its Energy Bill Relief Scheme for businesses, charities and other organisations. Under the scheme, wholesale energy prices will be capped for all organisations for six months from 1 October. The savings will begin to appear in November's bills and will be applied automatically.



New Supporting You Service

The council has also launched a new holistic service to support those who are struggling with the rise in cost of living. The new service is delivered by a dedicated team of trained advisors who are able to intensively support people with a range of difficult and challenging issues at once, so that it makes the process as easy and stress free as possible.

You can contact the team by emailing supportingyou@chichester.gov.uk or calling 01243 534860. To find out more please visit: www.chichester.gov.uk/supportingyou



What's on this Christmas

Venue codes and useful numbers

CC

Chichester Cathedral
www.chichestercathedral.org.uk/events

CCC

Chichester Chamber Concerts
www.chichesterchamberconcerts.com

CFT

Chichester Festival Theatre
www.cft.org.uk

CHIBID

Chichester BID
01243 773 263
www.chichesterbid.co.uk

DS

Discover Selsey
www.destinationselsey.co.uk

ME

Mulberry Marine Experiences
01243 601000 or
www.mulberry-me.co.uk/
marine-ecology/beach-cleans.html

NOV

The Novium Museum
01243 7775888 or
www.thenovium.org

WD

The Weald & Downland Living Museum
01243 811363 or
www.wealddown.co.uk

Tickets for a variety of events are available from Chichester Tourist Information Centre at The Novium, Tower Street. For more information contact 01243 775888.

While every effort has been made to make sure the accuracy of this information is correct, Chichester District Council cannot accept responsibility for any errors, omissions or inconvenience caused. We would advise you to check the details with the organiser before attending any of the events published.

Apologies to those people who will get the magazine after some of the events listed. The list runs from when the first deliveries of 'initiatives' are made, but delivery to all properties normally takes two weeks.

Every week or seasonal

City centre market

Cattle Market car park on Wednesday 7, 14 and 21 December

Farmers' Market

2 December – North and East Street, Chichester

16 December – Cattle Market car park, Chichester
20 January 2023 – North and East Street, Chichester, and then in the same location on the first and third Fridays of the month from February

New Park Community & Arts Centre

Offering a wide variety of arts, sports, community events and activities throughout the year. See more at www.newparkcentre.org.uk/WHATSON or email facilities/booking enquiries to operations@newparkcentre.org.uk

From 9 November

Watercolour Classes. Every Wednesday and Friday. 12.30–3.30pm. Roussillon Park Community Hall, Chichester. 01243 538304 or www.johnhillwatercolour.com

From 12 November to 23 April 2023

Sussex Landscape: Chalk, Wood, and Water exhibition. Pallant House Gallery. pallant.org.uk

12 November

The Chichester Singers. 7.30pm. Chichester Cathedral. Vaughan Williams – Dona Nobis Pacem. And Richard Merrill Brown – Hereward. www.chichestersingers.co.uk

15 November

Lunchtime Concert: Duo Dorado. 1.10–2.00pm. CC

22-27 November

Six. The international hit musical returns to Chichester. CFT

25 November

Is that a Bolt in Your Head. A play by Gonzo Moose theatre company. 8pm. The Empire Hall, Graffham, GU28 0QB. www.empirehall.org.uk

26 November

East Wittering Outdoor Christmas Craft Market & Funfair. Village Centre. 3–6pm with lights on at 5pm.

26 November

Chichester Christmas Lights Switch On. Rotary Club and Chichester BID. CHIBID

26 November

Tillington Church Christmas Fair. 10am–12.30pm. The Village Hall, Tillington. Christmas decorations, cakes and bakes, toys, bottle stall and Silent Auction prizes. www.allhallowstillington.org

26 November

Beach clean. 8.30am at Selsey Lifeboat station. ME

26 & 27 November

Advent – A boutique Christmas Experience and Market. Pre booking essential. WD

27 November

Boxgrove Winter Family Fun day. Entertainment, food, activities.

1 December

Chichester Chamber Concerts: Zoltán Fejérvári (Piano). 7.30pm. The Assembly Room, Chichester. Tickets from Chichester Festival Theatre. CCC

1 December

Midhurst Camera Club Speaker Evening. Nature Three: Arizona, Norway and Australia—Pauline and Colin Thornhill DAGBs BPEzs. 7.30–10pm. www.midhurstcameraclub.co.uk

1 & 2 December

Christmas Wreath Making. Price £45. 10.30am–12.30pm. All materials supplied. Stansted Park. www.stanstedpark.co.uk

1-5 December

Jack and the Beanstalk Professional Panto at New Park Centre. Morning, matinee, and evening shows. www.ticketsource.co.uk/creativestageproductions

1-31 December

Christmas at Cowdray. Festive light trail with a chance for children to visit Santa's Grotto.

2 December

Midhurst Christmas Street Party. 5–8pm. www.midhurst-tc.gov.uk

2 & 3 December

A Christmas Carol Theatre. Book a time slot to explore Stansted House in full Christmas spirit. £15. www.stanstedpark.co.uk

2 December – 1 January

Christmas Village at Seal Bay Resort, Selsey. Winter wonderland with Christmas activities and entertainment.

3 December

Midhurst Christmas Market. 9am–2pm. www.midhurst-tc.gov.uk

3 December

Petworth Christmas event. Stalls and activities for everyone to enjoy. 11am–7pm.

3 December

Father Christmas at The Novium Museum. Advance booking required. £8 per child, gift included. NOV

3-23 December

Chichester Christmas Market. 9am–6pm on Mon, Tue, Wed, Fri and Sat; 9am–8pm on Thur; and 9am–5pm on Sun. Chichester city centre. www.chichesterchristmasmarket.co.uk

4 December

Tree Dressing. WD

5-10 December

Christmas Concerts. The Band of HM Royal Marines join the Cathedral Choir. CFT

8 December

Chichester Starlight trail. Create star lantern and travel to other venues. 4–8pm. £5 per child. Booking essential. NOV

9 December

An Evening with Peter Auty. 5.30pm and 7.15pm. £35 per adults (plus Eventbrite booking fees). www.stanstedpark.co.uk

11 December

Tuppenny Barn's Christmas Market. 12–4pm. Tuppenny Barn, Southbourne. www.tuppennybarn.co.uk/events-programme/

10 & 17 December

Chichester Family Friendly Festivities. CHIBID

15 & 22 December

Chichester Late Night Shopping & Festive Entertainment. CHIBID

14 January

The Chichester Singers. 7.30 pm. Chichester Cathedral. Bach: Christmas Oratorio. www.chichestersingers.co.uk

Services we offer at Dovecote View Residential Care Home:

- Long-term Care
- Respite/Convalescence Care
- Day Care

For more information on our services, please call us on 01243 779080 or www.dovecoteview.com

Sussex Landscape: Chalk, Wood and Water

12 Nov 2022 – 23 Apr 2023
10% off when you book online

Joseph Mallord William Turner, Chichester Canal (c.1828), Oil on canvas, Tate, Accepted by the nation as a part of the Turner Bequest 1856, © Tate

Pallant House Gallery



Be who you've always been... a rock star

At Chichester Grange care home being a rock star doesn't stop when you make the journey into care. Bring your life with you to a place you can call home.

If you're considering care for yourself or a loved one call 01243 684207.



Trusted to care.

Chichester Grange care home
Donnington
careuk.com/chichester-grange



Bourne Bus service



This summer, a fantastic new community initiative was launched!

The Bourne Community Bus delivers much needed free transport for many isolated families on Thorney Island, as well as to residents of Southbourne, Nutbourne, Hambrook, Westbourne and Emsworth.

Running every **Tuesday, Thursday and Friday from 8:30am to 6pm**, this scheme is helping people get to shops in local towns and villages, access social activities, and visit friends and family. You can find out more at www.bournebus.co.uk



Are you winter ready?

Through the winter months, there is an increased risk of flooding, power cuts, and the effects of severe weather.

Are you aware that we have dedicated pages on our website providing advice and guidance: www.chichester.gov.uk/emergencies, and we provide information and alerts on our social media channels. You can also sign up to our email newsletter at: www.chichester.gov.uk/newsalerts

Petpals Chichester Professional Pet Care

- Dog walking & sitting
- Cat & small pet visits
- Puppy care
- Elderly dog care
- Pet transportation

Trained, Insured, DBS checked pet carers.

Call Sue or Jon 01243 940001

chichester@petpals.com

TAILORED HOME INSURANCE RIGHT DOWN TO THE FINEST DETAIL

For high-value properties and contents, including valuables, fine art and collections, choose NFU Mutual Bespoke home insurance.

To discuss your high-value home insurance, call Chichester and Horsham agency on 01273 492239 or Tracey Rooke at the agency on 07825268123 or search NFU Mutual Bespoke



Chatan A Modi is an appointed representative of The National Farmers Union Mutual Insurance Society Limited (No. 111982). Registered in England. Registered Office: Tiddington Road, Stratford-upon-Avon, Warwickshire CV37 7BJ. Authorised by the Prudential Regulation Authority and regulated by the Financial Conduct Authority and the Prudential Regulation Authority. A Member of the Association of British Insurers.



VISIT THE BIGGEST SHUTTER SHOWROOM IN WEST SUSSEX!

With lots of different materials, styles and options to consider, choosing shutters for your home can be a bit of a minefield!

That's why a visit to our showroom is a great first step to exploring shutters.

(Pop in for a chat, cup of tea & our favourite biscuits!)

Experience how much light they let in, how much privacy you really get and our unique fitting system that doesn't use screws.

(so no holes in your windows or walls!)

PLUS! Initiative readers get 15% off until 30th Nov 2022*

*T&Cs apply. Wooden shutters only. £2000 minimum order before discount.

Chichester Shutters Showroom
Kingley Centre, Downs Road, West Stoke PO18 9HJ
Monday to Friday & Saturday (by appointment only)

Please book appointment or call 01243 252096 before visiting

"Absolutely brilliant service from start to finish. Every member of the team was pleasant and efficient and the finished product looks fantastic."

- Rod & Danielle Smith, Runcton



"Chichester Shutters are probably the most lovely company ever. They do a wonderful quality job. Everything is excellent down to the tiniest detail."

- Helen Grounds, Barnham



Check out hundreds more 5-star reviews on Google!



Book online at chichestershutters.co.uk or call 01243 252096

Reynolds

Our family caring for yours

— Est. 1867

The most thoughtful decision

A funeral plan lets you choose the funeral you want and take care of the cost of your funeral director's services in advance. It's a simple, thoughtful way to plan ahead that lets you decide on all the main details, so there's no uncertainty and fewer stressful decisions for your family later on.

For further information or to book an appointment please call

01243 864 745

reynoldsfunerals.co.uk

info@reynoldsfunerals.co.uk

27-31 High Street, Bognor Regis, PO21 1RR
43 Spitalfield Lane, Chichester, PO19 6SG
Cemetery Lodge, Littlehampton, BN17 6LX

Reynolds Funeral Service is an appointed representative of Golden Charter Limited trading as Golden Charter Funeral Plans which is authorised and regulated by the Financial Conduct Authority (FRN:965279). Golden Charter Ltd, Canniesburn Gate, 10 Canniesburn Drive, Bearsden, Glasgow G61 1BE. Registered in England No. 02511598. Registered office: Golden Charter Ltd, One Fleet Place, London, EC4M 7WS.

*Terms and conditions apply, please ask for details.



FREE £50 M&S Gift Card
with every plan taken out before 31st December 2022*

Chichester Christmas market returns!

This December, East Street and North Street in Chichester city centre will come alive with an array of festive stands as we celebrate the return of the Chichester Christmas market.

The new-look Christmas market will feature an eclectic mix of unusual and quality gifts, beautiful crafts, stunning artwork, and speciality food and drink stands, offering festive goodies to take home or to enjoy on-the-go.

Stallholders will be offering a range of high quality, interesting products, making ideal Christmas gifts including: handmade ceramics, original artwork, glassware, jewellery, traditional toys, artisan cheeses, homemade pickles and chutney, seasonal decorations, and more!

Plan your visit

The Christmas market will be open daily from **Saturday 3 December** through to **Friday 23 December**, in Chichester City centre:

- 9am–6pm on Mondays, Tuesdays, Wednesdays, Fridays and Saturdays;
- 9am–8pm on Thursdays; and
- 9am–5pm on Sundays.

These are the opening times of the Chichester Christmas market only and store opening times on the high street will vary.

For more details, visit www.chichesterchristmasmarket.co.uk



Changes to other Chichester markets during December

While the Christmas market is on, the Wednesday Chichester market will be held in a temporary location. On **7, 14 and 21 December**, the market will be in Cattle Market Car Park, Chichester.

The Saturday trader's market and Sunday car boot sale will continue to operate at the Cattle Market car park at their normal times. Please see: www.chichester.gov.uk/generalmarkets

Support your local Farmers' Markets

You can buy all your festive food from local producers at our popular Chichester Farmers' Markets.

Pop along to East Street, Chichester, on **Friday 2 December** for a range of locally grown and made produce. The final market of the year on **Friday 16 December** will be held at the Cattle Market Car Park, making it easier for you to pick up your orders and get straight into your car.

Get all the essentials for your Christmas dinner or look for gifts too. Some stalls will even be taking pre-Christmas orders – please ask stallholders for more information.

After a short Christmas break, the next market will take place back in its usual location on **20 January 2023** – this will be the only Chichester Farmers' Market in January.

For more information about our farmers' markets, please visit www.chichester.gov.uk/farmersmarkets or our designated markets and events Facebook page: www.facebook.com/ChichesterDistrictEventsAndMarkets, or Instagram page: [@Chidiseventsmkts](https://www.instagram.com/Chidiseventsmkts)

Pre-booking essential* wealddown.co.uk

Pre-booked tickets only
Parking at Goodwood Racecourse
Park & Ride shuttle bus service provided

*Not applicable to Museum Members

CHICHESTER FESTIVAL THEATRE

SIX THE MUSICAL
MRS WARREN'S PROFESSION
CHRISTMAS CONCERTS
DEAR SANTA LIVE
THE WIND IN THE WILLOWS
THE LAVENDER HILL MOB
GIRL FROM THE NORTH COUNTRY

THE BEST EXOTIC MARIGOLD HOTEL
MOTHER GOOSE
HOW NOT TO DROWN
BUGSY MALONE
PRIDE AND PREJUDICE* (*SORT OF)
COMEDY, DANCE, MUSIC AND MUCH MORE

WINTER 2022/23

November – March
cft.org.uk 01243 781312
#Winter2022

Seal Bay A COVE RESORT

Christmas Village at Seal Bay Resort

2nd December 2022 - 1st January 2023

Have a magical day out at Seal Bay, Selsey

BOOK NOW

- Join Santa in his Grotto
- Aladdin Pantomime
- Christmas Market
- Have fun on the Ice Rink

Looking for extra support with your day to day living?

The Connect to Support website is for anyone in West Sussex who is looking for additional help or support to maintain their independence.

westsussexconnecttosupport.org

Need help to use the website?
Email: socialcare@westsussex.gov.uk or phone 01243 642121

Let's make this Christmas a local one!

We're looking forward to the cheer and celebrations of another exciting festive season in the Chichester District, with events, markets and fantastic local gift buying opportunities all on our doorstep!

From using your local markets and food producers or making the most of our wonderful visitor attractions, to searching for unique gifts from our independent shops, it's really important that we all continue to 'shop local, visit local and support local' this Christmas.

Shop local

Our fantastic high streets in Chichester, East Wittering, Midhurst, Petworth and Selsey have so much to offer, with local and beautiful gifts from a wide variety of shops, many of which you can't find anywhere else. While you're there, don't forget to visit the great selection of cafés and restaurants.

Check out the ShopAppy website for details of local shops and businesses, some of which are offering online shopping and 'click and collect' services to make your shopping that little bit easier:

- Chichester www.shopappy.com/chichester
- East Wittering www.shopappy.com/eastwittering
- Midhurst www.shopappy.com/midhurst
- Petworth www.shopappy.com/petworth
- Selsey www.shopappy.com/selsey

We're also excited about the welcome return of the Chichester Christmas Market this year, alongside our regular Farmers' Markets and city centre Wednesday and Saturday markets. You can find out more on page 16.

Visit local

We're very lucky to have a huge variety of wonderful attractions and arts, culture and heritage organisations in our district. To help you plan your Christmas break and enjoy everything the district has to offer, visit www.thegreatsussexway.org

The city, towns and villages across the district are organising plenty of festive events, so make sure you take a look at our 'What's On' section on pages 12 and 13.

For the very latest information on what's happening near you, visit our online events calendar at www.chichester.gov.uk/whatson

Support local

To encourage people to support our local businesses, we have created personalised tags and wrapping paper designs for our city and each of our towns. You can download these to print out here www.chichester.gov.uk/countdowntochristmas

If you're on social media, it's easy to show your support on Facebook and Twitter too by adding one of our campaign frames to your profile picture. You can find details on how to do this at www.chichester.gov.uk/countdowntochristmas, where you'll find lots more Christmas tips and information.



THE ART OF CHICHESTER

Exploring the arts, culture and heritage of Chichester city centre and the district from 1962, when Chichester Festival Theatre opened, to the present day.

This fascinating exhibition tells the story of how the arts have put Chichester and surrounding areas on the map. The exhibition runs until 25 February 2023. Admission is free, with donations gratefully received. An accompanying book, written by David Elliott is also available to buy from the museum.

For details see www.thenovium.org/artofchi



Keep in touch

Website: www.chichester.gov.uk/countdowntochristmas
 Events calendar: www.chichester.gov.uk/whatson
 Facebook: www.facebook.com/chichesterdistrictcouncil
 Twitter: www.twitter.com/ChichesterDC
 Instagram: www.instagram.com/chichesterdc
 Sign up to our email newsletter: www.chichester.gov.uk/newsalerts

CHICHESTER STARLIGHT TRAIL

Don't miss our special Starlight Trail on **8 December!** You'll collect your Starlight Trail passport from either the Novium Museum, Pallant House Gallery, or Chichester Cathedral, before making a star lantern at a venue of your choice. You can take part in festive crafts and activities, collecting stamps along the way. If you collect three or more stamps, you'll be entered into a prize draw to win a £40 Chichester gift card.

The event runs from 4pm-8pm and costs £5 per child. Tickets must be booked in advance from: www.thenovium.org/starlight

Contact centre Christmas closure

Our contact services centre will be closed from **Friday 23 December, reopening on Tuesday 3 January 2023.**

If you need to contact our car parks office, please call our out-of-hours messaging service on **01243 785166** or **01243 534734**. For any other district council-related emergency, please call the 'emergency out of hours' number on **01243 785339**.

If you have an enquiry about roads, pavements and street lighting, or need to report a fault relating to them, please contact West Sussex County Council by calling **01243 777100** or visiting www.westsussex.gov.uk

You can also access our services online at www.chichester.gov.uk

Christmas parking offer

This Christmas we have a special parking offer in place for the festive period. Simply select two hours and get a third free in most council-owned car parks across the district during December when using the MiPermit app. Please visit: www.chichester.gov.uk/mipermit



Christmas in Chichester

Discover a magical Christmas experience in Chichester city centre this year

- Traditional Christmas Market
- Enchanting Light Displays
- Christmas Trails
- Family Festivities & Entertainment
- Twilight Shopping
- And Much More...

Find out more
chichesterbid.co.uk



Festive waste and recycling



Please refer to our handy checklist to see which items can and cannot be recycled in your burgundy bin.

Empty chocolate advent calendars	✓
Cardboard boxes and packaging	✓
Polystyrene	✗
Wrapping paper and empty tubes	✓
Shiny or metallic wrapping paper	✗
Greetings cards and envelopes	✓
Ribbons and bows	✗
Plastic confectionery tubs	✓
Plastic meat trays	✓
Plastic film and wrapping	✗
Foil and mince pie cases	✓
Glass bottles and jars	✓

For a full list of what waste items you can recycle, visit: www.chichester.gov.uk/recyclingadvice

Improvements to our recycling collection trial

The way we collect textiles, small electricals and used coffee pods as part of our free kerbside collection trial has changed to make it even easier for you to recycle more from home!

The trial, which is available to 75% of households in the district, is now bookable online. To see if you're in the trial area and to book a free collection, visit www.chichester.gov.uk/textileandelectricalrecycling or www.chichester.gov.uk/podback

At the time of writing, we have completed over 11,000 collections and recycled more than 16 tonnes of material! We will continue to monitor the trial to see whether this service could be rolled out to more of the district in the future and we will keep everyone updated on this.



We've teamed up with St Wilfrid's Hospice once again to offer a Christmas Tree Recycling Scheme

If you sign up, St Wilfrid's volunteers will collect your real Christmas tree and recycle it for you in January 2023, in return for a donation to the hospice. Find out more at www.stwh.co.uk

If you're looking for food-saving tips to help you reduce waste while enjoying the festive season, we'll be sharing lots of tips on our social media channels, so please follow us on Facebook www.facebook.com/ChichesterDistrictCouncil and Twitter [@ChichesterDC](https://twitter.com/ChichesterDC)

Collection dates over Christmas

Our waste and recycling collection dates will be altering slightly over the festive period. Below you will find a table showing all changes during December and January. Please don't forget that you can also view your personal collection calendar on our website by visiting www.chichester.gov.uk/wastecollectioncalendar

Normal Collection Day	Pre-Christmas week	Christmas week	New Year week week 1	Post-New Year
Monday	12 Dec 2022	19 Dec 2022	*27 Dec 2022	*3 Jan 2023
Tuesday	13 Dec 2022	20 Dec 2022	28 Dec 2022	4 Jan 2023
Wednesday	14 Dec 2022	21 Dec 2022	29 Dec 2022	5 Jan 2023
Thursday	15 Dec 2022	22 Dec 2022	30 Dec 2022	6 Jan 2023
Friday	16 Dec 2022	23 Dec 2022	*2 Jan 2023	7 Jan 2023

* Bank holidays

If you have any extra waste over the holiday period, our collection crews will pick this up on your first collection after Christmas.

If you have extra recycling that you can't fit into your recycling bin, please keep it dry and place it in a loosely tied black sack next to your recycling bin on your scheduled collection day. Excess cardboard should be flattened and folded or cut down to a manageable size for a single crew member to handle.

The Garden Recycling Service will stop from **Friday 23 December** and will start again on **Monday 9 January 2023**. You can recycle your real Christmas tree using the Garden Recycling Service.

There will also be some slight changes to the clinical waste collections — all affected residents will be contacted directly.

NEW RETIREMENT APARTMENTS FOR SALE



Receive a £20 M&S gift card* when you visit, it's that simple!



Providing peace of mind for you and your loved ones

Retirement Living may not be for you right now, but perhaps you have a friend or family member who would enjoy a safe, secure, and independent lifestyle?

Call us to register your interest

01243 882601

crl.co.uk/harington-lodge

CHICHESTER
Harington Lodge,
117 The Hornet PO19 7BX
Open Tuesday-Saturday,
10am-5pm



**LODGE MANAGER • GUEST SUITE FOR FRIENDS AND FAMILY
• LIFT • LANDSCAPED GARDENS • OWNERS' LOUNGE**

*For full terms and conditions visit churchillretirement.co.uk/terms-and-conditions



Become a councillor

Next year, we will be holding the district council elections on 4 May 2023.

We have 36 councillors representing the views and interests of residents across the Chichester District. They are elected to represent their local areas, making decisions on council priorities, plans, policies and budgets.

If you would like to make a difference in your local community and represent residents, then you may want to consider becoming a councillor.



What does it involve?

All members will represent a ward. This involves proactively communicating with residents and signposting them to relevant services or organisations. All members attend Full Council, which takes place approximately eight times a year.

There are also a number of different roles available:

Become a member of a committee

In addition to representing your ward, you can also put yourself forward to sit on a committee. One example is the Planning Committee, which makes decisions on large scale planning applications, as well as those that have been referred for debate. Committees require a time commitment to read detailed reports prior to meetings.

Scrutinise key issues and decisions

The Overview and Scrutiny Committee meets five times a year to scrutinise key issues and decisions. External agencies and organisations are also regularly invited to answer questions about key matters.

Leader or Deputy Leader

Councillors vote on who should become the Leader of the Council. The Leader is expected to dedicate considerable time to fulfil the role and has a major influence on the council's policies and direction.

This person should expect to get involved in all aspects of the council and attend various meetings and events. The Deputy Leader provides support for the Leader and stands in for them when they are unable to attend meetings. This person is also often assigned a portfolio to represent as well.

Cabinet Member

The Leader is supported by Cabinet Members. They are selected by the Leader and are given a portfolio to focus on specific key areas. Cabinet Members are spokespeople for their areas of responsibility and are heavily involved in the work surrounding them. This role can be quite time intensive.

Chair / Vice Chair

The Chair's role is to represent the council at ceremonial events across the district and they Chair the Full Council meetings. This role requires a significant amount of time to attend events and meetings held during the day and evening. There is also a Vice-Chair who stands in for the Chair when they are unavailable.

When and where do meetings take place?

Cabinet, Full Council, Licensing committees (main), and Planning committees are legally required to meet in person. However, many of our consultative committees and

panels are currently held online. We have just trialled some evening meetings and councillors will consider the council's future approach to the time and venue of meetings in November.

What happens when someone is elected?

We offer an induction programme, which provides you with training on the legislation, procedures, and knowledge you require to do your job. This will include several whole day training sessions. The Licensing and Planning Committees require committee members to complete essential training. A detailed induction programme will be sent to you if you decide to stand for election.

Where can I find out more?

- Find out more about becoming a councillor and the requirements you need to meet at: www.chichester.gov.uk/becomeacouncillor and www.local.gov.uk/be-councillor
- You can contact the Elections team for help completing nomination paperwork on **01243 521010** or by emailing elections@chichester.gov.uk
- If you have any further questions about the role of a councillor then please contact our Democratic Services team on **01243 534684** or by emailing democraticservices@chichester.gov.uk

Transform your conservatory in just one day



2 FREE PANELS

*Quote Ref
INIT1122

Enjoy your conservatory all year round with insulated roof panels

INSTALLED IN 1 DAY

"What a difference a day makes as the saying goes, and yes, that's all it took to install."

Mr & Mrs Barber, Wells

WARMER IN WINTER

"There is no doubt that the conservatory is much warmer than previously, and no, the room is not darker either!"

David Birch, Chichester

USABLE ALL YEAR ROUND

"The conservatory is now used throughout all seasons of the year and is far more comfortable to sit in whatever the weather outside."

Mr & Mrs Gibson, Portishead

MOULD & CONDENSATION

"This is the best thing we have done in this house. Used to run with condensation and now zero."

Karen Thomas, Chippenham

COOLER IN SUMMER

"You could have fried an egg on the table in there in the summer, I now look upon the conservatory as a new room. It is quiet, restful and cosy."

Carol Doyle, Surrey

ENERGY EFFICIENT

"I've already turned the underfloor heating down. Lovely job guys, thank you!"

Anne Bird, Bristol

QUIETER IN BAD WEATHER

"For the first time in 10 years we do not have to close the door to the conservatory when it rains, as the noise is minimal and before I found it difficult to hear the TV over the loudness of the rain on the old roof."

Mr & Mrs Bailey-Webb, Warsash

"What a difference a day makes as the saying goes, and yes, that's all it took to install."

Mr & Mrs Barber, Wells



Get a price for your conservatory roof

0800 08 03 202
www.greenspaceconservatories.co.uk



Terms and Conditions apply. Green Space UK, Unit 8 BH24 1PD, is a credit broker and is authorised and regulated by the Financial Conduct Authority. Applies to orders of 8 panels or more. Valid until the end of November. Not to be used in conjunction with any other marketing offer



WAYNE-WINDOWS

.COM

Since 1975

Charlwood Street, Bognor Regis PO21 2PQ
01243 866753

