

initiatives

issue 95 • spring 2024



**Roaring into
Chichester**
Dinosaur exhibition

**Supporting our
community**
50 years of the council

Selsey sea defences
Protecting our coast



**THE GARDEN
SHOWS 2024**

**15%
discount**
when
pre-booking
online

19 – 21 April
Firle Place

30th Anniversary

7 – 9 June
Stansted Park

26 – 28 July
Broadlands



www.thegardenshows.com



Clearwell mobility

Making Life Easier



Visit your local showroom today!

Chichester
1 Market Avenue,
Southgate, PO19 1JU
01243 839 699
Mon-Sat 9-5PM



*Prices quoted exclude VAT & are available to customers with a long term medical condition.

www.clearwellmobility.co.uk

Welcome to the spring issue of initiatives



Like me, I'm sure your diary is starting to look rather full, as the start of spring encourages us to think about trips, days out and holidays. We hope that we may play a part in this with our piece on pages 8 and 9 which talks about how our council is supporting and encouraging events as part of our Events Strategy. You'll be able to read more about some of the events that we've supported and

introduced over the last year or so and what we are planning for the future – and there are quite a few dates you may want to pop in your diary!

Speaking of dates, you may not be aware but this year marks 50 years since Chichester District Council was formed. A lot of changes have happened since then and on pages 18 and 19 we reflect on our work.

A special dinosaur exhibition will be coming to The Novium Museum in May. The museum team are also working on an exhibition for 2025 about the former Shippam's factory which was based in Chichester – you can find out more on page 6.

We also have a feature on page 16 about the inspiring work of our Community Warden, Rich Moorey, who has been helping protect vulnerable residents in Selsey thanks to a very simple idea that he came up with last year.

Best Wishes

Councillor Clare Apel
Chair of Chichester District Council

Contents

Features	
Exciting events programme for the district	8-9
Unique wellbeing initiative is helping rough sleepers access support	20
Events	
What's on	12-13
News	
Your Council Tax explained	11
With your help – we've planted nearly 25,000 trees!	14
Chichester Wellbeing	14
Protecting vulnerable residents in Selsey	16
Cover Stories	
Roaring into The Novium Museum this summer	6
Replacing Selsey sea defences	10
50 years of supporting you	18-19

We'd like to thank our advertisers for covering the design, print and distribution costs of this magazine

Follow us



District Council offices

East Pallant House
1 East Pallant
Chichester
West Sussex
PO19 1TY
Tel: 01243 785166 Fax: 01243 776766
Internet: www.chichester.gov.uk
Email: helpline@chichester.gov.uk
Emergencies out of hours: 01243 785339

Sign up to Initiatives+

Sign up to our monthly Initiatives+ email newsletter by **8 May 2024** and be in with a chance of winning either a **family ticket for the Tangmere Military Aviation Museum** or a **£50 Chichester Gift Card**.

Simply head to www.chichester.gov.uk/newsalerts to sign up.



Chief Executive: Diane Shepherd

Editorial Team: Sarah Parker, Clare Hawkin and Terri Foster.
For further information/enquiries, please ring 01243 534537/534679.

Designed by: StudioMoø Design Ltd, Chichester

Printed by: Walstead, Peterborough

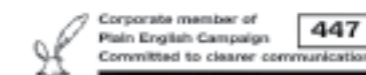
Published by: The Communications Team, Chichester District Council

Because *initiatives* enables other groups and individuals to publicise their work and consult with members of the public, the views expressed may not be those of the District Council.

Front cover: Thank you to Victoria Simmons @notjustvegetables for allowing us to use their beautiful photo.

To advertise with us, please email advertising@chichester.gov.uk or call 01243 521059.

Inclusion of advertisements does not constitute a recommendation by Chichester District Council of the products or services offered or the organisations involved, nor will the council incur any liability whatsoever for any claim relating to them.



This publication is available in large print. Please telephone 01243 534679 for further details.

Our family-owned business has been providing Plumbing & Heating services throughout West Sussex for more than 60 years in both Domestic and Rental sectors.

Book A FREE Quote
01243 545400
01903 252000

Proud members of
Checkatrade

Crouchers

Plumbing Heating Bathrooms Kitchens

Discuss safer showering options with our FREE design service.

Our experts design, supply & install creative Bathrooms & Kitchens to suit all budgets. Our aim is to always be competitively priced.

admin@crouchersplumbing.co.uk
www.crouchersplumbing.co.uk

Love our parks and gardens!

Every week, thousands of people use our district's parks and gardens for exercise; rest and relaxation; socialising; or simply to enjoy the fresh air. Open spaces are crucial for our general health and wellbeing and are much loved by residents and visitors of all ages.

Our parks and gardens team manage or maintain 92 sites across the 303 square miles of the district. We wanted to tell you about some of the sites we care for and introduce you to some of the special people who look after these sites on a daily basis.

Our dedicated grounds team maintains sites all the way from Lynchmere near the Surrey border, to Selsey on the coast, including:

- Priory Park;
- Oaklands Park;
- Bishops Palace Gardens;
- Florence Road
- Whyke Oval
- Jubilee Gardens;
- Brandy Hole Copse;
- South Pond, Midhurst;
- East Beach, Selsey;
- Marine Drive, Bracklesham;
- all council car parks;
- six play parks; and
- 11 cemeteries (open and closed).

Planting and looking after trees

You may not be aware, but we have created four mini urban forests and two community orchards in open spaces through the Tree Chichester project, with 2,514 trees planted in these spaces. With your help, nearly 25,000 additional trees have been planted across the district through the project, including in our parks and gardens.

We carefully consider which trees we plant in our parks and open spaces so that it benefits the local environment and supports biodiversity.

We keep a close eye on our trees, checking them regularly and organising an independent survey every two years. We want to keep our trees in top condition, but if we identify trees that have significant signs of disease or decay, we may remove them if they are at risk of falling.

If they pose no risk, we sometimes leave them to help the environment – rotting tree trunks are an excellent home for insects!

Three years ago, we identified Ash Dieback in trees on Centurion Way in Chichester. In response, we've been carefully managing them and removing those that are worst affected. We are pleased that we are seeing young Ash trees build resilience to the disease, which demonstrates the amazing ability of nature to respond.

We often plant trees that have been donated and we also have a number of trees planted in people's memory. Friends and family often help to care for their tree and find this very rewarding. If you are interested in finding out more about this, please email: parks@chichester.gov.uk

Creating wildlife areas

We've also created a number of naturalised areas across our parks and open spaces. These have been designed to attract wildlife, bees, butterflies and other pollinators, and provide them with food and shelter throughout the year. The more diversity we have in our natural habitats, the more bees, birds, animals and other insects there will be to help pollinate our favourite fruits and vegetables.

Sports and play areas

We believe we care for one of the best bowls greens on the South Coast! Priory Park in Chichester is home to the oldest bowls club in Sussex, dating back to 1881. Records also show that the bowling green existed as far back as 1658!

Our team also look after six play areas and inspect them three times a week and carry out a full inspection once a month. We check all of the goalposts and equipment in our parks once a week so that they are ready for you to use and we regularly carry out line work and cut the grass to make sure that the pitches continue to look great.

You might be interested to know that our parks and open spaces are home to a wide variety of activities each week including:

- fitness classes
- archery
- rugby
- cricket
- football
- bowling
- softball
- American football
- parkrun
- events and weddings.

To book one of our sports pitches please email sport@chichester.gov.uk or visit: www.chichester.gov.uk/sportspitchescourts

To hire our land for an event please email events@chichester.gov.uk or visit: www.chichester.gov.uk/hireofland

Keeping Bishops Palace Gardens beautiful!

Charlie has been working with our Parks and Gardens Team since 1996, and is currently the Groundsman at Bishops Palace Gardens, which the council leases from the Bishop so the public can enjoy access. Leading a dedicated group of volunteers, he helps to look after this beautiful space.

One of the projects he's been working on recently is potting hundreds of cuttings of box hedge which he hopes will help replenish any plants in the future. Like all good gardeners he likes to re-use and recycle.

Behind the big shed that's his garden 'office' are polytunnels which are full of cuttings that he and the volunteers have been nurturing over the past few months. Each year, the volunteers hold a plant sale for members of the public where they sell any unused cuttings. Money from the sale is then put back into the gardens.

Charlie says: "We try not to buy too much in if we can help it. For example, I started taking box plant cuttings at the end of last summer, which we have been looking after and at the moment we have more than 1,000 plants. It's all about being proactive: if we have cuttings now, then when needed we can replace the box hedge in three- or four-years' time."

The gardens have a number of features including a formal garden with part-Tudor walls; a broad walk bed planted mainly with Mediterranean plants; an alpine garden; plus an area called 'The Vista' which is planted with herbaceous beds with warmer colours to the east and cooler colours to the west. There is also a rose pergola that features climbing roses, clematis



Charlie with the volunteers of Bishop's Palace Gardens

and honeysuckle; plus an arboretum, which contains around a 100 rare and unusual trees and shrubs, including a Giant Redwood tree (sequoia) and a Handkerchief Tree.

A few years ago, the team started moving towards more drought tolerant plants and introduced more wildlife areas to the gardens as well.

"I love everything about the gardens. I couldn't see myself working anywhere else," says Charlie. "When you're doing a job in the garden you can get completely lost in what you're doing, it can be so peaceful."

"In the summertime most of the work is around weeding and tidying up the borders, while the winter is key because it's when you cut everything back and prepare for the next year. I don't have a favourite season – they are all interesting and there's always something to do here. Every so often I like to go round the garden and be a visitor – I'll sit down on a bench for ten minutes so that I can see what the public see. Quite often, you'll see something that needs doing because you're seeing it from a different view."

The group are in need of a few small hand tools such as secateurs. If you have any hand tools that you no longer need that are still in good working order please email parks@chichester.gov.uk

Join online today!

www.chichester.gov.uk/gardenrecycling



There's nothing worse than lifting heavy bags of garden waste and having to transport them to the recycling centre. You'll be glad to know that we have the perfect solution!

We offer a collection service that provides a reliable, convenient, and cost-effective way of recycling your garden waste.

Subscribe to the service and benefit from:

- Reliable fortnightly collections of your garden waste including grass cuttings,

leaves, hedge trimmings, weeds, and small branches.

- No more messy trips to the recycling centre – let us do the hard work for you!
- Knowledge that your garden waste is being recycled locally into high quality, peat-free compost.

Over 23,000 households are already using the service – join them today by visiting www.chichester.gov.uk/gardenrecycling

'Egg-citing' exhibits will roar into The Novium Museum this summer!

A new exhibition at The Novium Museum will showcase how even the largest dinosaurs started life as eggs and tiny hatchlings.

Discover the secrets of dinosaur eggs and babies with amazing dinosaur specimens from around the world as part of the 'Dinosaurs: Hungry Hatchlings' exhibition.

Follow iconic dinosaurs such as T-Rex, Triceratops and Diplodocus on their perilous journey from hatchling to hunter, and find out who had to grow the fastest to avoid being bitesize snacks for hungry predators.

Councillor Jess Brown-Fuller, Cabinet Member for Culture and Events at Chichester District Council, says:

"We usually think of dinosaurs as huge and ferocious monsters, but they all started life as eggs and babies. We're really excited to host this exhibition which shows a softer side to some of the most fearsome prehistoric predators. It's sure to be a hit with visitors of all ages!"

Visitors can get a hands-on feel for the past, as they're encouraged to touch real dinosaur bone and casts of fossils. Skeletons, authentic models and stunning artwork bring the Jurassic and Cretaceous periods to life.

Dinosaurs: Hungry Hatchlings opens Saturday 11 May and runs until Saturday 9 November 2024.
 Tickets: £5 (adults); £3 (children); £14 for a family (up to five).
 For details and to book, visit: www.thenovium.org/dinosaurs



New project will help unlock Shippam's archives

The Novium Museum is about to embark on an exciting new project, which will unlock the advertising archive of the former local family-run business, Shippam's.

The museum has received just over £44,000 from Arts Council England to fund the community project, which will culminate in a headline exhibition for 2025.

Established in 1786, Shippam's was a much-loved employer in Chichester, whose success and popularity spread worldwide. The project will explore how family and community shaped one of the best loved brands of the 20th century by creating a digital version of existing paper records; record a series of oral histories and engaging with the public and community groups.

Employees often joined the company straight out of school and stayed for the whole of their working lives. One generation often followed another – this experience and knowledge was vital to the company's success.

1974 marked the end of an era for Shippam's, when the former family-run business was acquired by the William Underwood Company. Princes, who then acquired the company in 2001, decided to close the East Street Walls factory. The factory façade and silver wishbone were kept and can still be seen today.

Members of the public will also have the opportunity to be a part of the Shippam's project, with the museum recruiting and working with local volunteers to catalogue, re-pack and digitise the Shippam's collection.

Jim Shippam, former Chairman and Chief Executive of Shippam's, says: "I am delighted that this project has been made possible, with thanks to the generous support from Arts Council England. Cataloguing and researching the Shippam's advertising archive, alongside conducting an oral history project, will provide a valuable resource for the public and will ensure the unique story of Shippam's is preserved for future generations."

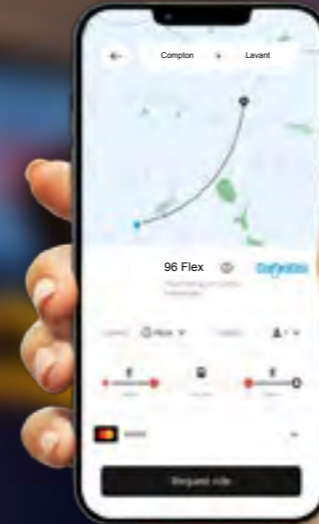
To find out more about the project contact the museum by emailing thenovium@chichester.gov.uk or calling 01243 775888.



More information about the history of Shippam's can be found at: www.thenovium.org/shippams

Book-a-Bus

for when you want it!



Try our new flexible, on-demand bus service Bookable Monday to Saturday, 06:30 to 19:30

westsussex.gov.uk/book-a-bus
 01243 858854

pingo
download the app

Bus it! You know it makes sense.



WS33165 01.2024

The best things in life are free!

Free bus travel for disabled or state pension age residents

westsussex.gov.uk/FreeBusPass
 0330 222 6222

Bus it! You know it makes sense.

WS33165 01.2024

Dates for your diary – exciting events programme for the district!

Back in 2019, we asked you for your thoughts on what sort of events you would like to see in the district. Since then, we've been working hard to deliver a varied and inclusive programme of events to meet your needs, and to support our local economy.

Events are really important, because they bring us all together as a community and they also help to generate additional income for local businesses – not to mention, encourage people to come and visit our wonderful district!

Since launching our events strategy – www.chichester.gov.uk/events – we have brought more varied markets to the district, including the Cross Market & More and the Summer Street Party events, which are now popular fixtures in people's diaries. We have also continued with our regular Chichester Farmers' Market, which takes place on the first and third Friday of every month in the city centre.

We also delivered 'September Saturdays' in Midhurst last year. These were very well received, with hundreds flocking to enjoy a series of free family events, including outdoor cinema and entertainment; a Get Active Day; and live music across the town. We're already looking to see if something similar could be provided again this year.

We've also been working hard to support the amazing City Sounds Festival which took place in Chichester city centre last

March and November. The event has been celebrating local talent by helping provide a platform for original, up-and-coming local musicians, as well as supporting the evening and night-time economy. One of the bands featured in November's event has now signed to the EMI Record Label and another has been chosen as the Czech Republic entry for the Eurovision song contest! City centre businesses have also seen the benefit of these events and we are working closely with them to organise more. Organiser Chris Simmons, of Smithereen Music Group, is already working on another event for this year.

In addition, we also brought the first vegan market to Chichester in January, with a further event planned for later in September. In February, we organised another popular laser light show over two days at the Chichester Canal Basin following the fantastic feedback we received from you last year – and we're pleased to say that it was another huge success this year. As a result, we are also actively looking to bring an additional laser light show to another location in the district next year, so watch this space!

Part of our work also includes supporting other local events to see how they can help enhance the district. For example, last year we worked with the organisers of the Distinguished Gentlemen's Ride to help bring it into Chichester city centre so that more people could see the bikes and interact with the event. This event will be back again in the city centre on Sunday 19 May 2024.

Future plans hopefully include a special family day at Chichester skatepark later in the year. We're also looking at bringing a series of Brocante markets to the district, which will sell everything from vintage apparel to second hand treasures, plus other events that we can hold in Selsey and Petworth. And we're also linking up with The Novium Museum's Roman Week in May to hold a special Roman-style market to accompany this celebration of Chichester's heritage. We're also considering introducing a festive ice rink.

"Holding events can be a real boost for an area's economy and can help create a sense of identity," says Councillor Jess Brown-Fuller, Cabinet Member for Culture and Events at Chichester District Council. "As part of our events strategy, we are also very keen to utilise and look at a whole range of different local venues and spaces across the district, including those that can be sometimes overlooked, to see what experiences and events we can bring. We also want to be inclusive and cater for as many different residents and age groups as possible.

"We're also really keen to talk to individuals and groups who want to put on events in the district to see how we can work together and make them as successful as possible. So, if you want to hold an event, please come and chat to us about your ideas.

"We know from the feedback that we have gathered that people want more varied events happening in the district and we really want to make that happen. As a result, our events team are working really hard to achieve what's set out in our events strategy. Last year, through the UK Shared Prosperity Fund, we funded two City Sounds Festivals. The event had a huge impact on the city centre, with a number of participating venues reporting significant increases in takings and artists really appreciative of having the opportunity to perform.

"We are also going to be working closely with students at Chichester College and Chichester University to find out more about what sort of other events young people would like to see."

Find out more by following our markets and events Facebook page: www.facebook.com/ChichesterDistrictEventsAndMarkets

What's coming up this year?



Cross Market and More

This unique market will be returning to Chichester city centre on:

- Sunday 7 July (including the summer street party)
- Sunday 29 September
- Sunday 24 November

Distinguished Gentlemen's Ride

Sunday 19 May, Chichester city centre.

Chichester Pride

Saturday 25 May, This year will see a parade down North Street, Chichester.

Brocante upcycle and sustainability markets

Taking place in Chichester city centre on:

- Sunday 21 April
- Sunday 11 August
- Sunday 27 October

Vegan Market

22 September, Chichester city centre.

City Sounds Festival

Returning in 2024 – dates to be confirmed.

Chichester Farmers Market

Taking place on the first and third Friday of each month in East Street and North Street, Chichester.

CultureSpark Medmerry art installations

A series of workshops and walks will accompany three new commissioned public art works by local artists which are being installed in the RSPB Medmerry Nature Reserve. Events are being planned to take place from 31 May.

Sign up to our monthly email newsletter at www.chichester.gov.uk/newsalerts for the latest details.



Chichester Roman Week returns!

Head to Chichester this May half-term as we celebrate all things Roman! The award-winning Chichester Roman Week returns from **Monday 27 May – Saturday 1 June** with exciting events across the district and beyond. Led by The Novium Museum, history will be brought to life with something for everyone to enjoy!

The Novium Museum and a host of other organisations and attractions will be running events throughout the week including talks, walks, craft sessions, workshops and new for Roman Week 2024, a 'Romans at the Museum' day. This will take place on **Wednesday 29 May** when Legio Secunda Augusta, one of Europe's leading Roman re-enactment groups, will be taking over The Novium Museum, offering a series of interactive talks and demonstrations throughout the day between 10am and 4pm.

For booking information and a full list of Roman Week events please visit: www.thenovium.org/romanweek or call **01243 816525**.

To find out more about What's On across the district, please refer to our online events calendar at: www.chichester.gov.uk/whatson and sign up for our free monthly email newsletter by visiting: www.chichester.gov.uk/newsalerts

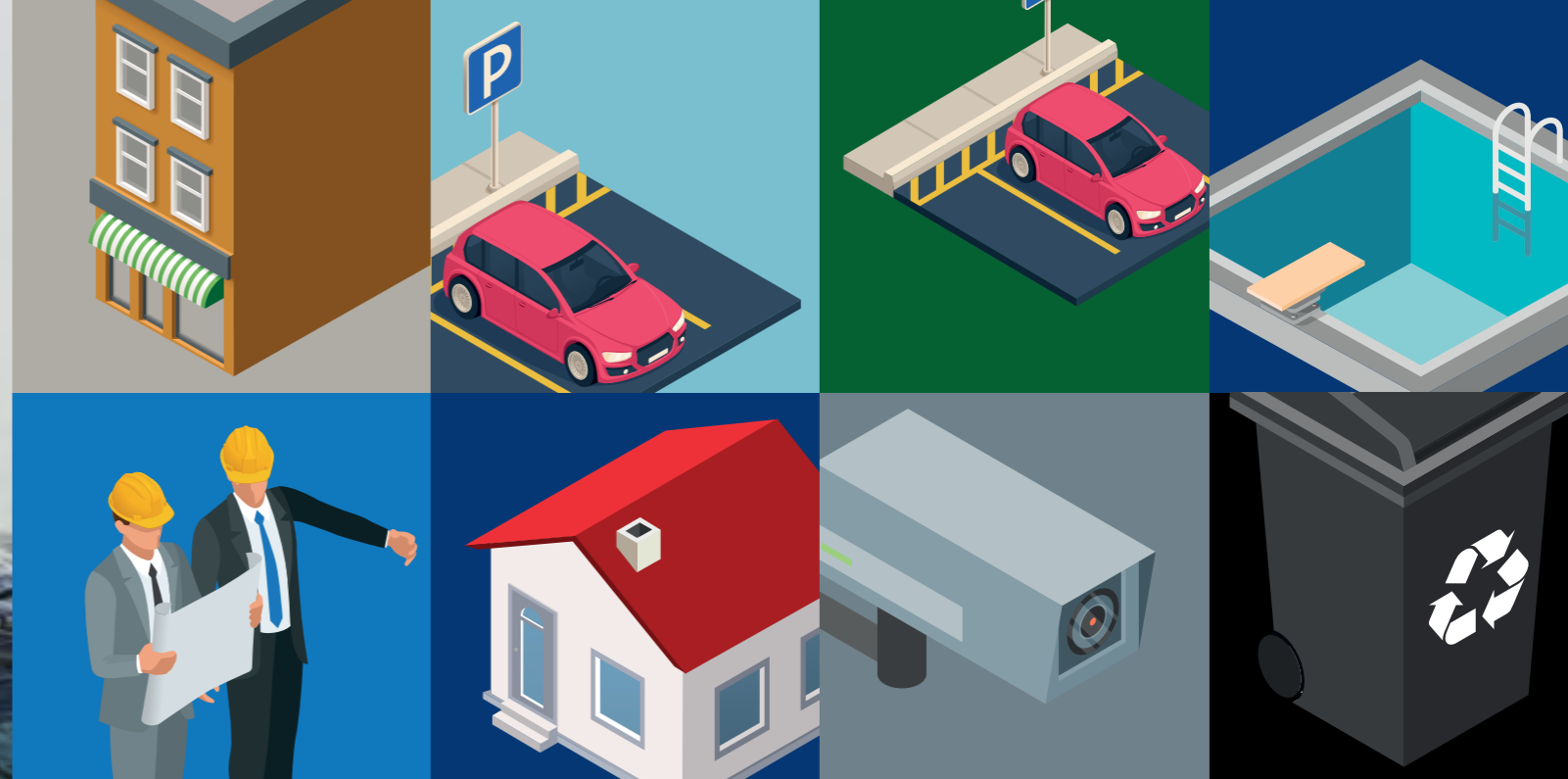


Council has bid for multi-million pound funding to replace Selsey coastal defences



Chichester District Council has submitted a bid for funding for a multi-million pound scheme to help protect homes and businesses in Selsey from flooding and coastal erosion.

Courtesy of @Coastaljjuk



If we are successful with our bid to the Environment Agency, the funding will be used to develop options and outline designs for a sea defence scheme that would reduce the risk of coastal flooding and erosion to Selsey.

Chichester District Council's coastal engineering service, known as Coastal Partners, has carried out early feasibility work. This has highlighted more than 700 properties that are at tidal flood risk. This number is predicted to increase over the next 100 years, along with the number of properties at risk from erosion. The current defences are now nearing the end of their life and although a lot of work has been carried out over the years to help prolong them, a long-term solution is now a priority.

"We are seeing more extreme weather events, which could impact on the town's sea defences and increase the risk of flooding, which is why it is so important that we are all able to plan and prepare," says Councillor Jonathan Brown, the council's Cabinet Member for Environmental Strategy. "Although it's not one of the council's statutory duties, managing future coastal flooding and erosion is a key priority for us and we have permissive powers to undertake such works.

"The coastal defences for Selsey involve a number of elements, including seawalls, rock revetments, groynes, and shingle beach. Over the last decade the council has undertaken a very successful programme of beach management through shingle replenishment, and Environment Agency funding is currently in place to continue these works until March 2026. Following the council's agreement, we have pressed ahead and submitted a

robust business case for the Environment Agency to consider.

"There will be a significant funding gap, so we'll be working hard in order to close this, including contacting the Environment Agency to highlight funding issues. We'll also be working with other partners and the community on funding options for a long-term solution.

"I have to stress that there is no guarantee that we will be successful with the bid for funding, but it is important that we are looking ahead and considering all the issues. We want to maximise our chances of being able to prepare as well as possible for the next steps in protecting Selsey as these defences come to the end of their life."

Lyall Cairns, Executive for Coastal Partners, the council's shared coastal engineering service says: "The Selsey Peninsula is an exposed coastline with a long history of coastal flood and erosion risk. Before the construction of the existing seawalls in the 1950s, Selsey had one of the fastest-eroding coastlines in England. Hard-engineered defences were built to reduce the risk to Selsey from both tidal flooding and erosion.

"As these defences are reaching the end of their serviceable life, repair and maintenance is becoming more frequent and costly. We have carried out work to produce a feasibility assessment looking at Selsey's coastal defences, and we look forward to working with Chichester District Council on the next steps so that we can help protect the affected communities and businesses."

While hard-engineered defences won't be affordable or appropriate everywhere on

the coast as the country adapts to rising sea levels, they will continue to be required in some areas. Huge amounts of work will need to take place to design and fund the scheme and if successful, it is anticipated that it would be around six years before construction work would start."

Cllr Brown adds: "This is a major project and during all of this work we will be closely consulting with the local community as well as businesses and other public organisations who have an interest in the Selsey coastline."

Residents are encouraged to find out how they can help to protect against flooding. This includes signing up for flood warnings: www.gov.uk/sign-up-for-flood-warnings; making a flood plan www.gov.uk/government/publications/personal-flood-plan; and protecting their property.

People can also find out more about the council's shared coastal defence service at: coastalpartners.org.uk and the response provided to flooding at: coastalpartners.org.uk/flood-response They can also find out frequently asked questions about the work in Selsey at: coastalpartners.org.uk/Selsey_FAQs



Your council tax explained

You may be surprised to know that if you are a Band D taxpayer, we charge you just £3.59 a week for our services. Although we collect your council tax, we only keep around 8% of the amount you pay each year. Of the 92% remaining, 77% goes to West Sussex County Council, around 11% goes to Sussex Police and roughly 4% goes to parish councils. Each authority makes its own decisions about any changes.

Offering value for money

You come into contact with our work every day. We provide over 80 services to you, across 303 square miles. We empty your bins, check food hygiene standards, licence taxis, clean your streets, care for our parks and open spaces and provide support and reassurance to our communities.

In order to protect vital services for our residents, we have increased the average tax bill by less than 10 pence a week for a Band D property. This means that the average council tax payer will pay £3.59 a week for the services we provide each day.

Extra support

We know that for people on low incomes, paying council tax on top of the cost of living can be a struggle.

Our local council tax reduction scheme supports those on low incomes with up to 100% of the total cost of council tax.

We also have a Discretionary Scheme to assist those disadvantaged by the banded scheme for those in receipt of universal credit and care leavers.

We also know that people are finding things tough at the moment, due to rising goods and energy prices, inflation and cost of living pressures. We have our dedicated Supporting You Team who are available to help you if you are struggling financially. The service is delivered by a dedicated team of trained advisors who are able to intensively support people with a range of difficult and challenging issues at once, so that it makes the process as easy and stress free as possible. You can get in contact with them at: www.chichester.gov.uk/supportingyou; emailing supportingyou@chichester.gov.uk; or calling 01243 534860.

How can I pay my council tax?

You can pay your council tax and business rates by direct debit. As well as being

quicker and easier, it ensures that your payments are always on time – and it also helps us to save money too.

You can also pay:

- using your debit card and calling 01243 534880 – and have your council tax reference to hand;
- online at www.chichester.gov.uk/payabill
- at a Post Office or PayPoint facility; or
- by bank transfer.

If you need further help, please email taxation@chichester.gov.uk or call 01243 534501.

What's on?

Venue codes and useful numbers

CC

Chichester Cathedral
www.chichestercathedral.org.uk/events

CCC

Chichester Chamber Concerts
chichesterchamberconcerts.com

CFT

Chichester Festival Theatre
www.cft.org.uk

CHIBID

Chichester BID
01243 773 263
www.chichesterbid.co.uk

DS

Discover Selsey
www.destinationselsey.co.uk

ME

Mulberry Marine Experiences
01243 601000 or
www.mulberry-me.co.uk/marine-ecology/beach-cleans.html

NOV

The Novium Museum
01243 7775888 or
www.thenovium.org

PHG

Pallant House Gallery
www.pallant.org.uk/whats-on

WD

The Weald & Downland Living Museum
01243 811363 or
www.wealddown.co.uk

Tickets for a variety of events are available from Chichester Tourist Information Centre at The Novium, Tower Street. For more information contact 01243 775888.

While every effort has been made to make sure the accuracy of this information is correct, Chichester District Council cannot accept responsibility for any errors, omissions or inconvenience caused. We would advise you to check the details with the organiser before attending any of the events published.

Apologies to those people who will get the magazine after some of the events listed. The list runs from when the first deliveries of 'initiatives' are made, but delivery to all properties normally takes two weeks.

Every week or seasonal

City centre market

Every Wednesday in North Street and East Street, Chichester. Weekly Saturday market in Cattle Market car park, Chichester. Car boot sale – every Sunday from 11am in Cattle Market car park.

Farmers' Market – 19 April, 3 and 17 May, 7 and 21 June, 5 July
North and East Street, Chichester City Centre. 9am – 2pm, 1st and 3rd Friday of each month (including bank holidays).

New Park Community & Arts Centre

Offering a wide variety of arts, sports, community events and activities. See more at www.newparkcentre.org.uk/WHATSON or email facilities/booking enquiries to operations@newparkcentre.org.uk

18 April

Fighting for Faith: the life and reputation of Thomas Percy. Chichester Historical Association. £5 per meeting. 7.30pm, Friends' Meeting House, Chichester. chihistoricalassociation@gmail.com

18 April

Guy Deacon CBE – 'Running on Empty'. An evening talk at Stansted Park. £30. www.stanstedpark.co.uk/whatson

19 April

Feast of Fiddles 30th Anniversary Spring Tour. St James Church, Emsworth. 7.30pm. £27.50. feastoffiddles.co.uk

19 April – 11 May

The Other Boleyn Girl. Tudor drama based on Philippa Gregory's best-selling novel. CFT

20 Apr, 18 May, 15 Jun Monthly Market at The Grange Centre, Midhurst. 8.30am-2pm

Until 21 April

Exhibition John Craxton: A Modern Odyssey. PHG

21 April and 11 August Brocante upcycle and sustainability markets. Chichester city centre.

22 April

Test Pilot Chris Taylor – Air Aces Talks. The challenges and experiences of flying experimental aircraft. Boxgrove Village Hall. 7.30pm. £10. www.airaces.org.uk/07502400657

26 April, 31 May, 28 June

Evening campfire talk – Primal Warrior. Primal Warrior is a men's local support promoting good mental health. 7pm-9pm at Goodwood Education Centre, bookings and information: www.primal-warrior.co.uk

27 April – 28 July Exhibition – British Studio Ceramics. PHG

27 April

Midhurst Rother College Community Day. Food, drink, crafts and activities. 10am-2pm. www.mrc-academy.org/communication/latest-news/mrc-community-day-10am-2pm-6

28 April

Green Sketching Workshop Discover – RSPB Pagham. All materials provided. £25. 10am-12pm. www.wildcrayon.co.uk/upcomingworkshops/p/pagham-april24

28 April

Antique & Collectors Fair – The Grange, Midhurst. 10am-4pm. £2. www.grandmasatticfairs.co.uk

30 April

What did the Victorians do for Chichester? Talks at the Record Office. 7pm, West Sussex Record Office, PO19 1DD. £8. www.eventbrite.co.uk/e/what-did-the-victorians-do-for-chichester-tickets-726791361527

From 8 May

Watercolour Classes with John Hill. Every Wednesday and Friday. 12.30-4.30pm. Roussillon Park Community Hall. johnhillwatercolour.com

11 May

Oving Scarecrow Day. A family day of free entertainment. ovingscarecrows.co.uk

11 May – 9 November

'Dinosaurs: Hungry Hatchlings' exhibition. Discover the secrets of dinosaur eggs and babies with amazing dinosaur specimens from around the world. For tickets, visit: www.thenovium.org/dinosaurs. NOV

11 and 12 May

Sussex Art Fair. 11am-5pm. Goodwood Racecourse. £5 advance, £7.50 on the door. www.sussexartfair.co.uk/tickets

12 May and 2 June

Guided Tour of Stansted House. 11am and 11.45am. www.stanstedpark.co.uk/whatson

12 May

Lavant Horticultural Society Annual Plant Sale. 2pm, Lavant Memorial Hall.

13 May

Janet McCallum: 'Quilts and Commissions' – Chichester Creative Textiles. Lavant Memorial Hall. newslettercreativetextiles@gmail.com

16 May

The Feminine Touch in the late Roman Republic – Chichester Historical Association. £5 per meeting. 7.30pm, Friends' Meeting House, Chichester. chihistoricalassociation@gmail.com

19 May

Antique & Collectors Fair – Westgate Leisure Centre, Chichester. 10am-4pm. £2. www.grandmasatticfairs.co.uk

19 May

Distinguished Gentlemen's Ride. Chichester city centre. www.gentlemansride.com

20 May

Air Ambulance Pilot Mick Patrick – Air Aces Talks. Mick Patrick on his career in aviation. Boxgrove Village Hall. 7.30pm. £10. www.airaces.org.uk/07502400657

26 May and 23 June

Indoor Car Boot at The Grange Centre, Midhurst. 10am-1pm

27 May – 1 June

Chichester Roman Week. Exciting Roman themed events at The Novium Museum and a host of other organisations. NOV

31 May – 15 June

Chichester Fringe. The multi-arts fringe festival returns. www.chichesterfringe.co.uk

2 June

Selsey Open Gardens. 10am-5pm. Email tony.sue123@btinternet.com for more

Services we offer at Dovecote View Residential Care Home:

- Long-term Care
- Respite/Convalescence Care
- Day Care

For more information on our services, please call us on 01243 779080 or www.dovecoteview.com



Festival of Flowers

5 – 8 June 2024

CHICHESTER CATHEDRAL

TICKETS NOW ON SALE
CHICHESTERCATHEDRAL.ORG.UK

Supported by RATHBONES

80+ ARTISTS TO MEET | 3000+ ARTWORKS TO BUY

SUSSEX ART FAIR

GOODWOOD RACECOURSE

10th - 12th MAY 2024

BOOK YOUR TICKETS NOW

SCAN ME!

www.sussexartfair.co.uk/tickets
(For complimentary weekend entry, enter promo code: INITIATIVES)

With your help we've planted nearly 25,000 trees!



Our 'Tree Chichester District' scheme has seen nearly 25,000 trees planted across the district through 175 individual projects since its launch in 2021. The scheme is funded by the government's Shared Outcomes Fund and is part of the Trees Outside Woodlands programme, which seeks to test new ways to boost tree numbers and tree health outside of woodland areas across the country.

As part of the scheme, we have allocated free and subsidised trees to residents, community groups, schools, parish councils, charities, businesses, landowners, and tenant farmers. We have also awarded grant funding to support the development of seven community orchards in Selsey, Chichester, Fishbourne and Goodwood, and helped to plant five new mini urban forests in Hambrook, East Broyle, Summersdale, East Beach Walk and Midhurst.

The scheme has also supported two community tree nurseries. The Manhood Wildlife & Heritage Group's community tree nursery in West Wittering was enhanced with a new raised bed, and in Selsey, we helped introduce a completely new nursery. The trees planted in both nurseries will be nurtured and grown until they are ready to be replanted in the local community.

Funding has also been provided to private landowners to plant trees in areas such as Loxwood and Lavant. As part of this, work has been undertaken to enhance hedgerows, which provide important wildlife corridors for a number of different species.

At the end of last year, we ran a grant scheme to enable landowners to access funding to plant trees and hedgerows in priority areas of the district with the aim of better connecting woodland habitats.

We are looking to run this scheme again later this year, so keep an eye out for more information!

Earlier this year, we were pleased to announce that we have secured an additional £12,000, which will enable us to issue grants to parish councils and community groups to support the development of additional community orchards. This is thanks to a share of the government's £2.5m Coronation Living Heritage Fund developed to promote green spaces and connect communities with nature to mark the coronation of His Majesty King Charles III.

You can find out more information about the Tree Chichester District scheme at: www.chichester.gov.uk/treescheme and you can also contact our designated Tree Project Officer for advice by emailing treescheme@chichester.gov.uk or calling 01243 521161.

The scheme is an integral part of our Climate Emergency Action Plan, and you can find out more about this at: www.chichester.gov.uk/climatechange



Community Orchard planting at Fishbourne Roman Palace.



chichesterwellbeing

Now that spring is here, do you want to feel healthier and have more energy?

Chichester Wellbeing is here to support you. We have a team of wellbeing advisors who can help you make lifestyle changes which will improve your health and wellbeing. All our services are free of charge for anyone aged 18+ living, working or studying in the district.

Here's what we can offer:

- NHS Health check, a wellbeing check in (depending on eligibility) and one-to-one support with a wellbeing advisor.
- 12 weeks of support to quit smoking with free NRT or vape.
- Be more active by joining our walking with poles sessions where you will learn Nordic walking techniques.
- Join a local falls prevention programme to regain your confidence if you're feeling a bit wobbly on your feet.

- Lose weight with Weigh BetterLife, our 12-week weight loss programme for people with a Body Mass Index of 25-40.
- Reduce the amount of alcohol you drink to safer levels.
- Ask us about emotional wellbeing support and learn new ways to cope.

If you would like to book any of these services call **01243 521041** or email chichesterwellbeing.gov.uk and find out more at: www.chichesterwellbeing.org.uk



Expert advice on paying for care

Long-term care in your own home or in a residential care home is expensive, but with expert advice from independent financial specialists, Carewise can help you to make informed decisions on choosing and paying for the right care.

The Carewise care fees specialists are regulated by the Financial Conduct Authority and members of the Society of Later Life Advisers, so you can have peace of mind when discussing your finances.

Carewise could also help to protect your finances for the future. Contact Carewise to find out how you could benefit.



[carewiseadvice.com](https://www.carewiseadvice.com) carewise@westsussex.gov.uk 0330 222 7000

Looking for extra support with your day to day living?



The Connect to Support website is for anyone in West Sussex who is looking for additional help or support to maintain their independence.

Visit our website to:

- **DISCOVER** tips on improving your health and wellbeing
- **VIEW** equipment to help you stay independent
- **FIND** support for carers
- **LEARN** about options for extra care and support.



westsussexconnecttosupport.org

Do you need help to use the website? • Email: socialcare@westsussex.gov.uk • Phone: 01243 642121

Community Warden helping to protect vulnerable residents in Selsey

Rich Moorey, our Community Warden for Selsey, has been busy working with the Selsey Care Shop to help protect some of the most vulnerable residents.

Rich has been working with the Care Shop for the past year to conduct in-person welfare checks on vulnerable residents when volunteers are not able to contact them during their daily 'good morning' check-in calls. In some cases, Rich was unable to enter the property as the resident had fallen or was unable to reach the door. As a result, Rich came up with a simple and cost-effective idea to help improve people's safety and peace of mind – by encouraging residents to install special key safes.



After approaching the Chichester District Joint Action Group (JAG) with his idea, he was awarded £650 which has been set aside for Selsey Care Shop to order key safes when requested by a resident. The key safes mean a resident can keep a key securely outside their home. This can then be accessed by a trusted family member or carer so that they can gain access to the property in an emergency. The funding that Rich secured from the Joint Action Group has helped fund 60 key safes. He has been letting residents know about the scheme through the Care Shop and has already fitted 68.

A resident just needs to register with the Selsey Care Shop to order one, and then once it's ready Rich will install it in a discreet location on the outside of their home. He also encourages the resident to let their GP know the code as well, to provide another layer of safeguarding in case of an emergency. The project is currently only running in Selsey, but Rich is keen to see this taken up in other areas of the district: "I'm so pleased with the progress of this initiative so far. It's been great to take this from an idea into something that is making a real difference for some of the most vulnerable people," says Rich.

"We're so proud of the work all our Community Wardens do in helping residents feel safe in their communities," says Councillor Tracie Bangert, Cabinet Member for Communities, Wellbeing and Customer Services at Chichester District Council. "The work that Rich is doing is just one example of how our community wardens develop community initiatives that have a real impact in the area that they are working in."

"Selsey Care Shop work with some very vulnerable people and this project will go a long way to help them feel safe and protected in their own home – in some cases it could even save their life."

Selsey Care Shop is a one-stop hub where people in Selsey can access a wide range of services run by the Selsey Community Forum, including befriending; support for carers; wellbeing support; an employment service; and support with money issues.

The Selsey Care Shop also runs the Good Morning Call scheme, where a team of volunteers carry out a daily phone call to residents who might appreciate a friendly chat or could be vulnerable or housebound. The 25-strong team of

volunteers currently make around 100 'Good Morning' calls across the Manhood Peninsula each day.



If you would like to find out more about the work the Chichester District Community Wardens do, they can visit:

www.chichester.gov.uk/communitywardens

You can find out more about Selsey Care Shop by visiting www.selseycommunityforum.uk/Care-Shop/

SPOT ON CEREMONIES

Your 'spot on' celebrant for

weddings
vow renewals
new arrivals funerals
and all milestone moments

07771 890854 www.spotonceremonies.co.uk
@spotonceremonies vicky@spotonceremonies.co.uk

Bespoke heart-centered ceremonies

Service
Repair
Tyres
Wiring
Security

mono motorcycles

Chichester's premier service and repair centre
T: 01243 576212 E: info@monomotorcycles.co.uk
New Barn Offices, Funtington, PO18 9DA
www.monomotorcycles.co.uk

Compassionate care in the comfort of your own home

For a friendly chat, call: **01243 216416**
care@gacarerers.co.uk
visit gacarerers.co.uk

Our CareAngels can assist with:

- Shopping
- Companionship
- Meal preparation
- Domestic tasks & cleaning
- Administering medication
- Driving to appointments
- Escorted outings
- Personal care

Guardian Angel carers

We provide visiting care, overnight care and live in care.

A huge thank you to all the team who are kind, attentive and devoted.

Augusta Court relative carehome.co.uk quote

In a 2023 survey of all our care homes, when asked if 'Staff have a professional and friendly manner', **97% of family and friends agreed.**

9.8
Augusta Court Review score 2024 carehome.co.uk*

Rated March 2022
Good
Care Quality Commission

anchor
Who Cares? We do, and we always will

If you are considering care for a loved one at Augusta Court care home, Winterbourne Road, Chichester, West Sussex, PO19 6TT
Call 01243 969 381
Visit www.Anchor.org.uk/AugustaCourt

Looking back over 50 years of supporting you



Cllr Adrian Moss, Leader of Chichester District Council, looks back at the past 50 years of the council, and how it has supported you over this time.

You may be interested to know that this year marks 50 years since the council was formed, along with all other district councils in the country. This provides us with the chance to reflect on the advancements made by the council over successive decades, in partnership with you, previous councillors, our communities and businesses.

You only have to look at how we have adapted and transformed to meet the technological advancements over this time and the financial challenges we have had to face, to see how much has changed. And more recently, we had a very different challenge in the form of the coronavirus pandemic. This also made us adapt and change the way we work, so that we could continue to deliver our services to you.

Housing has always been a top priority. Our temporary accommodation for those facing homelessness, Westward House, was built back in 1993. Just two years ago, we expanded this by adding an additional building to provide a further 17 flats and we are currently looking to expand our temporary accommodation even further. We also work closely with local registered housing providers to make sure that residents are able to access quality and affordable housing. This has included significant investment over the years, helping to create new homes and develop community led housing across the district. This included investing in rural eco-friendly bungalows in Westbourne in 2010, which was the first development in the country to use a particular type of air heat pump!

Leisure and cultural facilities have also been significantly developed. The council not only stepped in to save the New Park Centre in the 1970s, when it was called the Sunshine Centre, but it also helped to refurbish it in 2012. Equally, the council also helped Chichester Festival Theatre through some very difficult times, so that it can thrive today. We are so lucky that our area is home to both the Festival Theatre and Pallant House Gallery, both of which are internationally recognised and which have received significant support from the council over the years. In 2012, we also built a multi-million pound museum over the remains of a Roman Bath House. Since then, nearly 500,000 people have visited The Novium Museum which has launched some internationally recognised exhibitions, including Tim Peake and the Mystery Warrior.

It's hard to believe that our Westgate Leisure Centre is 37 years-old and this is because of the continued investment the council has made into it over this time. More recently, this has included work to cut carbon emissions from the centre, after the council successfully bid for a £1.3 million government decarbonisation grant. This should reduce the centre's emissions by almost a quarter. We also built Bourne

Community Centre in Southborne 21 years ago, the Selsey Centre 17 years ago, the Bracklesham Barn 13 years ago, and then The Grange Centre in Midhurst 10 years ago. The council also launched a £1.2 million leisure fund in Petworth in 2004 and this delivered numerous facilities and improvements, including two new tennis courts and a pavilion, the re-roofing of the Sylvia Beaufoy Centre, a new stage and lighting scheme at the Herbert Shiner School and an artificial green and improvements to the pavilion at the Petworth Bowls Club – to name just a few! We also restored Chichester's City Walls in 2011.

We've given out thousands of grants over the years to fund community projects and support for businesses. And from 2016, we started collecting the Community Infrastructure Levy. This is a 'roof tax' applicable to the majority of new developments. This money is used to fund infrastructure projects in the area – such as education facilities, transport, flood defences and open spaces. Parishes which have seen housing growth are also provided with funds to spend on projects, which will benefit local communities. By October of last year, we had collected £32.4 million for our local communities!

Supporting local businesses and job creation has also always been high on the council's agenda. During the coronavirus pandemic the council was named one of the three highest performing councils in the country for issuing grants to businesses

during the outbreak. It has also continued to invest in business accommodation, with millions of pounds being invested just in the past 10 years. This has included the opening of the Enterprise Centre; Ravenna Point; and the redevelopment of St James Industrial Estate last year. In total, the council owns and manages more than 50 industrial units.

Our communities are always at the heart of everything we do – and this could not have been more evident during the pandemic. Not only did we continue to deliver our critical services throughout this time – by redeploying staff so that we always had cover – but we also created our 'Supporting You' team. They are continuing to play a vital role in making sure that people who may be struggling are accessing the help that is available from a variety of agencies. Working with our charity partners, we also make sure that everyone has access to a roof over their heads.

Significant progress on these measures – and our environmental commitments and ambitions – have continued to be delivered, and we have even more exciting steps to take over the years ahead. Responding to the threat of climate change continues to be a priority, and we have already taken numerous steps to play our part, as well as encouraging residents and businesses to join us in making changes that will make a difference. Over 25,000 trees have been planted in the district; we've introduced electric vehicles – including at our depot; our new buildings have been designed to limit their carbon emissions; we've been helping businesses to prepare for the low carbon economy; and we're creating several strategic wildlife corridors. These are just a few of the many actions that have been achieved and more are to come.

The general economic outlook remains challenging for many people and organisations. The council is no different in that regard, but we are in a strong position and well-placed to continue making a positive impact on a daily basis within all of our communities.



Interesting facts

We cover **303 square miles** across the Chichester District.



The council has **36 councillors** who represent you and make key decisions.



We provide over **80 different services**, including waste and recycling collections; housing support; business support; community safety; health and wellbeing; and planning.



Our property estate consists of over **500 properties and sites**.



Thanks to you, we now **recycle 46% of all waste**. We have introduced new recycling services, including textiles, small electricals and podback.



We maintain **18 public toilets** across the district, including two Changing Places facilities – which are specifically designed to meet the needs of disabled children and adults with complex care needs – with two more to come soon.



On a typical day, our refuse crews walk between **12 and 15 miles a day** to collect your waste and recycling. That's the equivalent of **2.5 marathons a week!**



The council owns the land that the **Chichester Festival Theatre** is built on and the Grade II listed building used by Pallant House Gallery.



Our parks and gardens team manage **117 acres of land**.



We deal with around **2,500 planning** applications each year.



We undertake **400 direct business support visits** each year.



We inspect around **1,500 registered food businesses**.



We **licence over 500 drivers** for taxis and private hire vehicles.



Reverend Walter Hussey donated his private art collection to the council on his retirement. This gift led to the foundation of Pallant House Gallery: pallant.org.uk/media/the-hussey-bequest/



Unique wellbeing initiative is helping rough sleepers access support

Our Rough Sleeper Outreach Team have been working with our partners at Everyone Active on a unique project specifically developed to help rough sleepers access and accept support. Over 50 people have taken part in the initiative over the last year, which uses physical exercise – including walk and talk sessions; gym sessions; and even swimming – to help clients boost their wellbeing, confidence and self-esteem.



The sessions also provide clients with the opportunity to have conversations about other parts of their lives where they may want support.

One client went from being totally inactive, to participating in 60 minutes of exercise twice a week. As a result, it has given him more confidence and self-esteem, which has helped him socialise and feel part of the community.

“The project is all about recognising the benefits that becoming more active can bring,” says Ben Polhill, Activity and Wellbeing Manager at Everyone Active, who is leading the project.

“We’re here to chat to clients, some of them come to us a couple of times a week and it’s nice for individuals to have the distraction and have a bit of focus and routine away from life on the streets. We also have passes so that clients can use the services at the leisure centre on a regular basis.

“A huge part of the project is about helping to boost clients’ mental wellbeing and their general confidence and self-esteem. One of the activities that we run is a walk and talk session, which is really beneficial for people’s mental health. It also helps open up conversations around other areas of their life where they may want to make changes.

“It helps give a bit of structure to clients’ week, but we never ask too much of participants at any one time – when they are ready to talk, we are here for them.”

Ben’s team are also keen to ensure the project is delivered in different locations, not just at leisure centres.

“We are working with Stonepillow and other agencies to support clients in different settings, as it can be quite intimidating for people to go to a leisure centre if they have never been to one before or not been to one for a long time. So, we are keen to offer alternative sites. Just like the council’s rough sleeper outreach work, this is a bespoke service, and each person will want to interact with the service differently.”

The project has received funding from the Department of Levelling Up until April 2025, and Cllr David Betts, Cabinet Member for Housing and Revenues and Benefits at Chichester District Council, says it’s making a huge difference.

“As an athletics coach for young people, I know first-hand the positive effects that access to exercise can have on an individual’s general wellbeing.

“What’s fantastic is that through this initiative, we have seen people go from being totally inactive, to participating in activities throughout the week. As a result, it has provided those benefitting from the scheme with more confidence; helped to boost their self-esteem; and improved their general wellbeing.

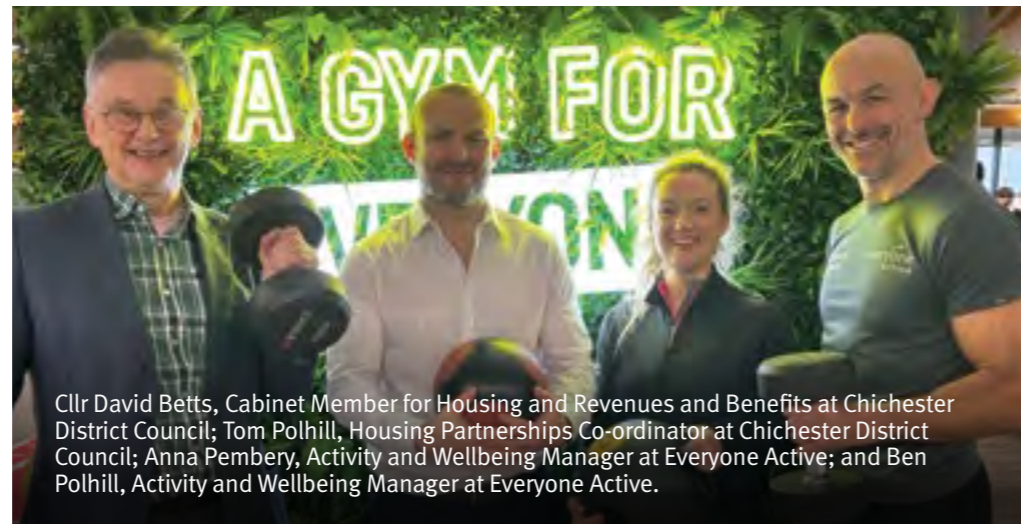
“It’s also helped people to better integrate into the community, meet new people and feel more empowered to engage with other services – not just from our council, but also from a variety of other agencies and organisations. We know that not everyone will want to engage with our services straight away, and so this is a great way of building relationships with a variety of organisations who can offer support.

“Not only do our Rough Sleeper Outreach Team go out each day, making sure that

rough sleepers know about the support that is available, but we are also committed to increasing the temporary accommodation that we own. Two years ago, the council expanded its existing temporary accommodation by adding an additional building to provide a further 17 flats. This has meant that we have been better able to assist people and provide the most cost-effective way of delivering this support. One of our key aims is to expand our temporary accommodation even further to meet the growing demand that we are seeing.”

Due to the success of the wellbeing scheme, it has been extended to those who may be at risk of homelessness or who are struggling with the current cost of living crisis.

“We know how challenging the current climate is for many people and so supporting people in this way is a key priority for us. This can also be seen through our Supporting You team, who are there to help people identify and access the range of support that is available to them, and our Social Prescribing team, who help people access a range of local non-clinical services to help meet their social and emotional needs. What is fantastic is to see the positive impact that all of these schemes are having, especially on those who need our help the most.”



Cllr David Betts, Cabinet Member for Housing and Revenues and Benefits at Chichester District Council; Tom Polhill, Housing Partnerships Co-ordinator at Chichester District Council; Anna Pembery, Activity and Wellbeing Manager at Everyone Active; and Ben Polhill, Activity and Wellbeing Manager at Everyone Active.

Reynolds
Our family caring for yours

— Est. 1867

The most thoughtful decision

A Golden Charter funeral plan lets you choose the funeral you want and take care of the cost of your funeral director’s services included in your plan at today’s prices. It’s a simple, thoughtful way to plan ahead that lets you decide on all the main details, so there’s no uncertainty and fewer stressful decisions for your family later on.

For further information or to book an appointment please call

01243 864 745

reynoldsfunerals.co.uk

info@reynoldsfunerals.co.uk

27-31 High Street, Bognor Regis, PO21 1RR
43 Spitalfield Lane, Chichester, PO19 6SG
Cemetery Lodge, Littlehampton, BN17 6LX

Reynolds Limited T/A Reynolds Funerals is an appointed representative of Golden Charter Limited trading as Golden Charter Funeral Plans which is authorised and regulated by the Financial Conduct Authority (FRN:965279).

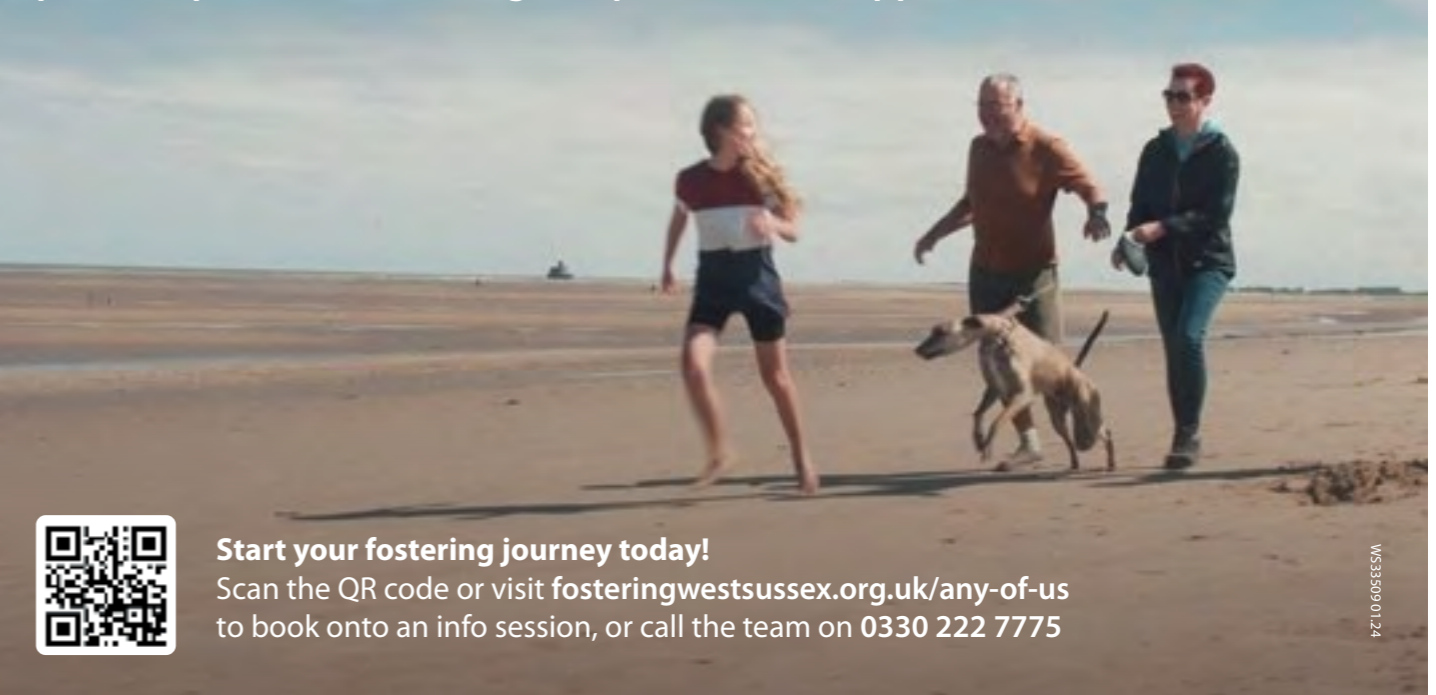
*Offer applicable to the purchase of a Golden Charter funeral plan from Reynolds Funeral Service between 1st March 2024 and 30th June 2024. Terms and conditions apply, please visit www.reynoldsfunerals.co.uk



FREE £50
M&S Gift Card
with every plan
taken out before
30th June 2024*

Every child needs a family. Do you have room in yours?

Become a Foster Carer with WSCC and receive up to £30k per child, per year, plus comprehensive training and professional support



Start your fostering journey today!

Scan the QR code or visit fosteringwestsussex.org.uk/any-of-us to book onto an info session, or call the team on 0330 222 7775

WS33509 01.24



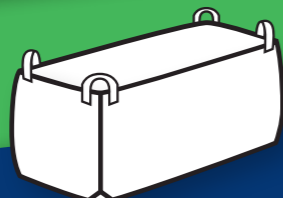
BULKYBAG

It's as easy as 1,2,3



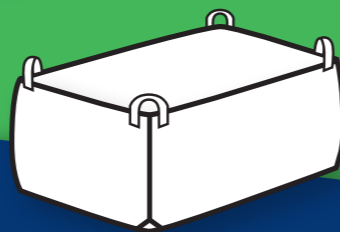
1. Buy the Bag

Order online and we'll deliver your bag straight to you



2. Fill the Bag

With your non-hazardous waste



3. Contact Us

When you're ready request a collection and we'll come and collect it

Taking on a DIY project?

Our BULKY BAG service provides a cost-effective and convenient waste removal solution for your home or business.

- Three different bag sizes available
- Ideal for house and garden clearances
- DIY waste
- Commercial waste

Terms and conditions apply. Service may not be available in all parts of the district. Please check online for full details



Order online today!
www.chichester.gov.uk/bulkybags

Outstanding care in the comfort of your own home



All our care visits are a minimum of one hour, meaning we deliver high quality, relationship-led care at every visit.

- Home help
- Dementia care
- Companionship
- Personal care
- Live-in care

"Such caring, friendly and lovely carers has made the whole experience a good one. Would definitely recommend this company for your loved one's care." P Cooper

Now recruiting Care Professionals

Join our team. Hourly or live-in care roles available across West Sussex. Flexible hours. Award winning training provided.



T: 01243 884111

homeinstead.co.uk/chichester



Scan to download our brochure



NYTON HOUSE
RESIDENTIAL CARE HOME

Residential Care
Respite Care
Dementia Care

A family-run care home serving the Chichester community for the last 45 years. Our guiding principle is to deliver care of the standard we would expect for our parents and loved ones.

Contact us by phone or email for more information or visit our website to download a brochure.

Find us on Facebook and Instagram

01243 543228

manager@nytonhouse.co.uk

www.nytonhouse.co.uk

Nyton House Residential Care Home,
Nyton Road, Westergate, Chichester PO20 3UL

15% Discount on Care Fees for first month



WAYNE-WINDOWS .COM

Since 1975

Charlwood Street, Bognor Regis PO21 2PQ
01243 866753

