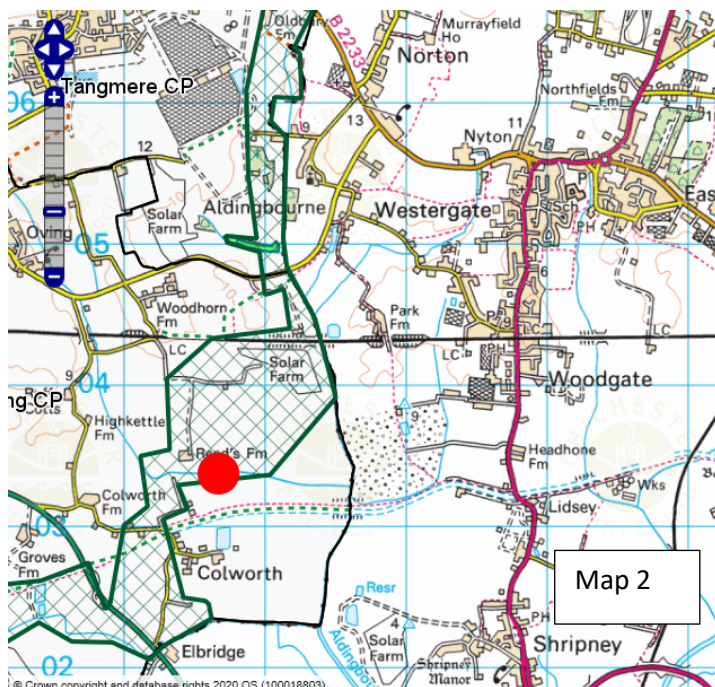
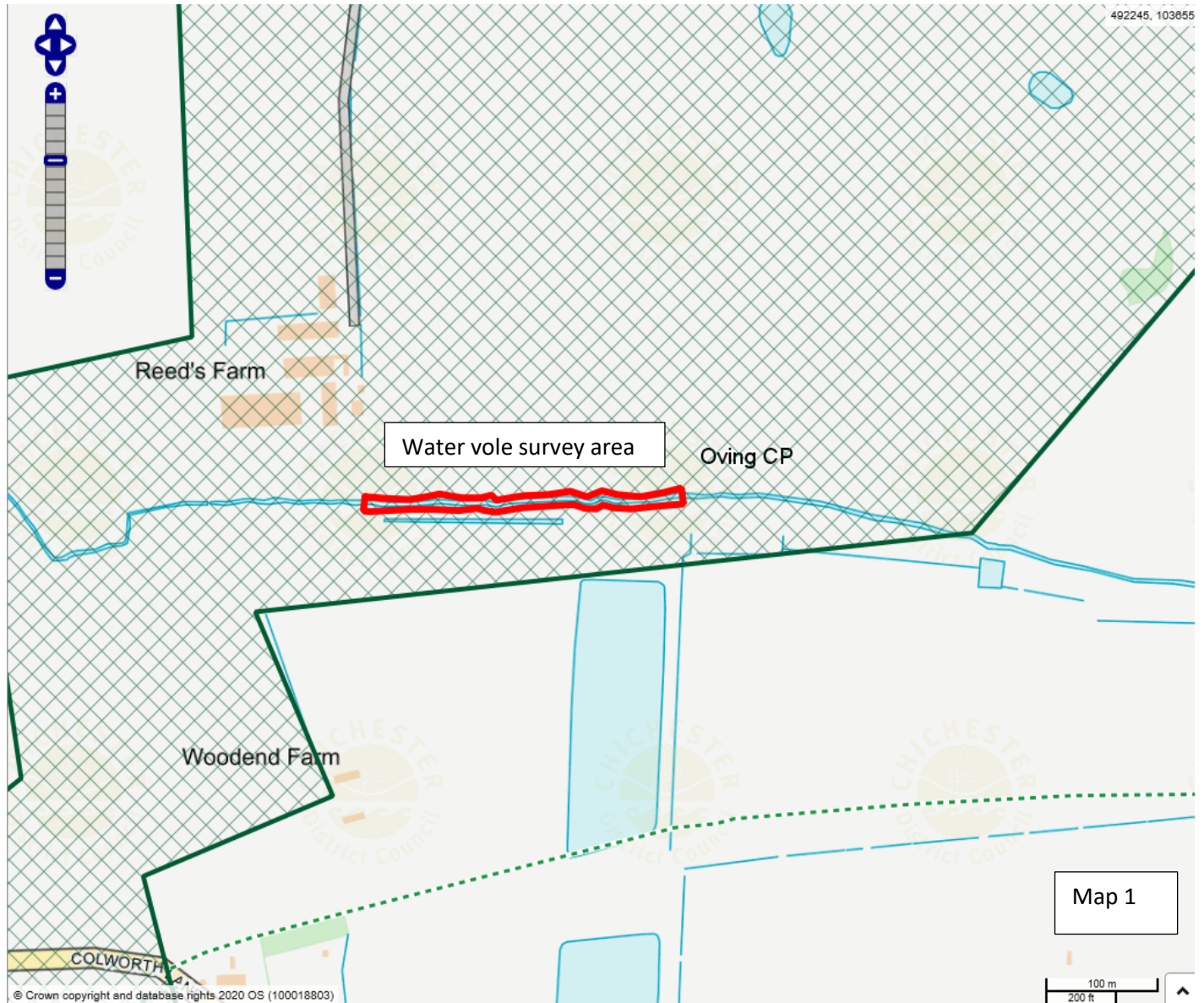


Water vole survey 17/04/2021 – Sarah Hughes (Community Wildlife Officer)

Ditch west of Aldingbourne Rife – PO20 2DB – Central Grid Reference: SU 9166 0339 (Maps below)



Map 1 – close up - showing the water vole survey area.

Map 2 – OS Premium Raster map showing the site in the landscape.

**Site 1 – Grid Ref.: SU 91669 03395**

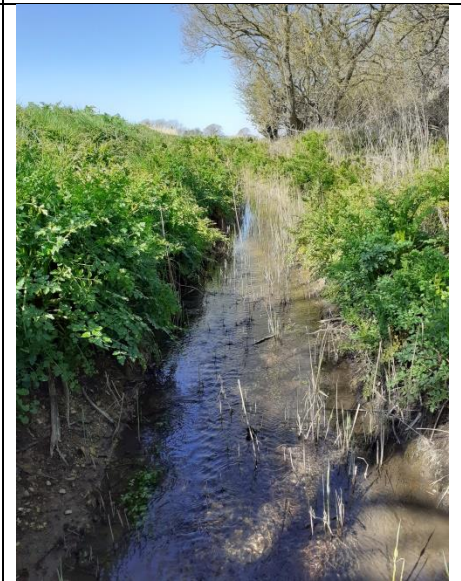
1) Eastern view of ditch



2) Eastern view within the ditch



3) Western view within the ditch


**Site 1 - Plant list (marginal area only) Central Grid Ref.: SU 9166 0339**

No.	Latin Name	Common Name	DAFOR scale
1.	<i>Anthriscus sylvestris</i>	Cow parsley	Abundant
2.	<i>Arum maculatum</i>	Lords-and-ladies	Rare
3.	<i>Cirsium sp.</i>	Thistle sp.	Frequent
4.	<i>Epilobium sp.</i>	Willow herb sp.	Occasional
5.	<i>Galium aparine</i>	Cleavers	Abundant
6.	<i>Geranium dissectum</i>	Cut-leaved crane's-bill	Frequent
7.	<i>Glechoma hederacea</i>	Ground-ivy	Occasional
8.	<i>Hedera helix</i>	Ivy	Abundant
9.	<i>Helminthotheca Echioides</i>	Bristly Oxtongue	Frequent
10.	<i>Helosciadium nodiflorum</i>	Fool's-water-cress	Frequent
11.	<i>Juncus effusus</i>	Soft rush	Occasional
12.	<i>Lamium album</i>	White dead-nettle	Frequent
13.	<i>Lamium purpureum</i>	Red dead-nettle	Occasional
14.	<i>Mentha aquatica</i>	Water mint	Occasional
15.	<i>Phragmites australis</i>	Common reed	Abundant
16.	<i>Oenanthe crocata</i>	Hemlock water dropwort	Dominant
17.	<i>Ranunculus ficaria</i>	Lesser celandine	Occasional
18.	<i>Rorippa nasturtium-aquaticum</i>	Water-cress	Occasional
19.	<i>Rubus fruticosus</i>	Bramble	Abundant
20.	<i>Rumex obtusifolius</i>	Broad-leaved dock	Abundant
21.	<i>Senecio vulgaris</i>	Groundsel	Occasional
22.	<i>Symphytum officinale</i>	Common comfrey	Rare
23.	<i>Taraxacum officinale</i>	Common dandelion	Occasional
24.	<i>Urtica dioica</i>	Stinging nettle	Abundant
25.	<i>Veronica chamaedrys</i>	Germander speedwell	Occasional

**Site 1 – Water vole evidence Central Grid Ref.: SU 9166 0339**

4) Water vole footprints



5) Water vole burrow & latrine



6) Water vole feeding station



7) Water vole feeding & latrine



8) Water vole feeding evidence



9) Water vole feeding station



10) Water vole latrine & feeding



11) Water vole feeding evidence



12) Water vole feeding/evidence



13) Water vole latrine & feeding



14) Water vole dropping



15) Water vole latrine



16) Water vole latrine



17) Water vole latrine



18) Water vole burrow



19) Water vole burrow



20) Water vole burrow

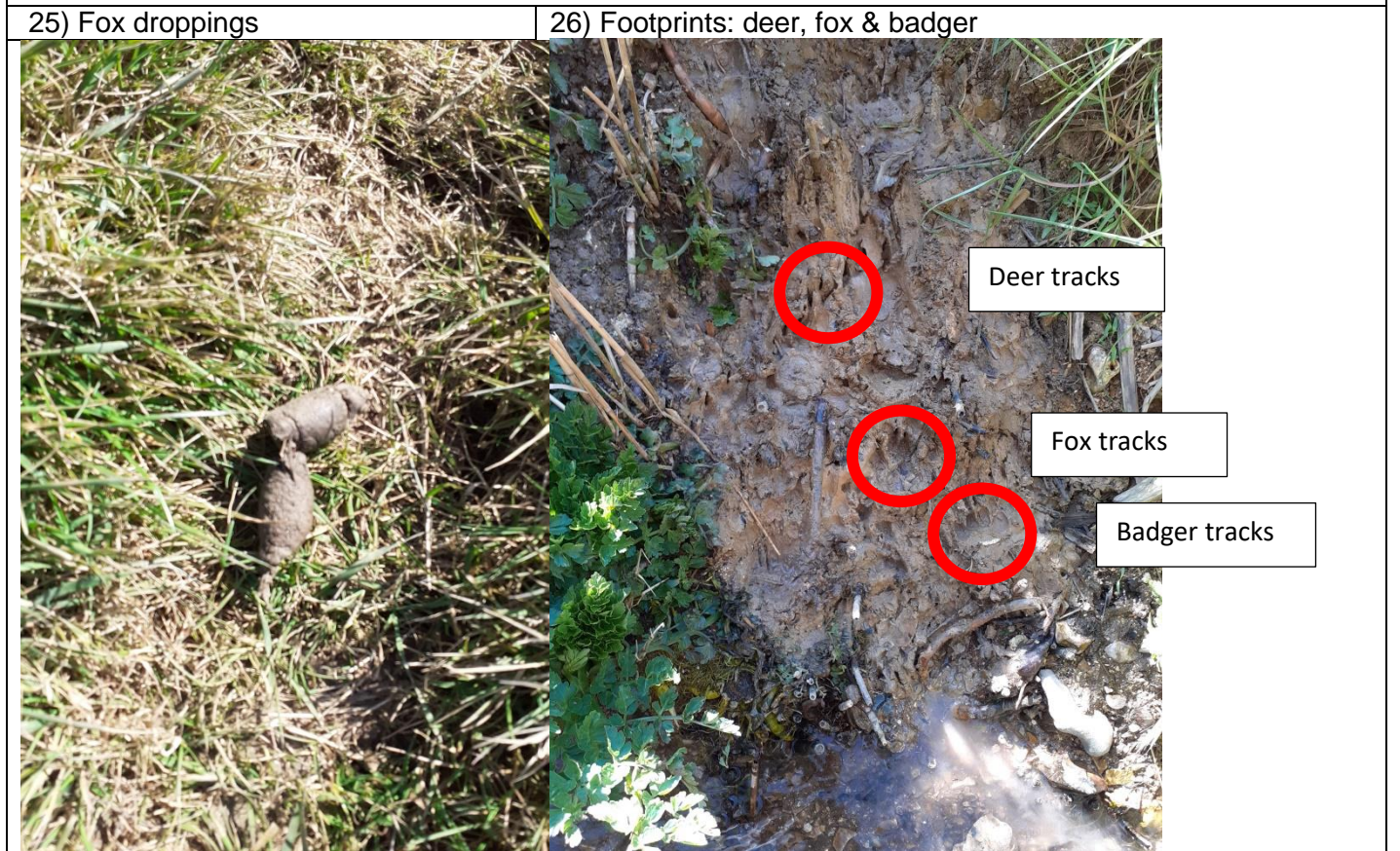


21) Water vole burrow





**Site 1 – Additional notes of interest Grid Ref.: SU 9166 0339**



Water voles *Arvicola amphibious* have experienced one of the most rapid and serious declines of any British wild mammal ever.

By the end of the 1990s we had lost more than 90% of our nation's water voles. This was due to habitat loss and fragmentation during the 20th century and more recent pressures from non-native American mink.

A recent report estimated a further 30% decline in the places where water voles live in England and Wales between 2006-2015.

Under the proposed Strategic Wildlife Corridor project, we have funding to assist with biodiversity enhancements, which could include fencing (to reduce the poaching by animals, particularly sheep or horses), pre planted coir rolls, further planting etc.

Details on managing land for water voles can be found on the following link - <https://assets.sussexwildlifetrust.org.uk/managing-land-for-water-voles.pdf>

Sarah Hughes ([shughes@chichester.gov.uk](mailto:shughes@chichester.gov.uk)) & mobile: 07765 175494